

MICHIGAN STATE

U N I V E R S I T Y

02/23: Design Day Booklet Team Project Page Artwork Feedback

The Capstone Experience

Dr. Wayne Dyksen
Department of Computer Science and Engineering
Michigan State University
Spring 2023



*From Students...
...to Professionals*

What do you need to do?

[1 of 1]

- An updated version of your Design Day booklet team page zipped folder with the artwork layout modifications is posted on our Downloads page. Get it. Unzip it.
- A PDF of this slide deck is posted on our Downloads page. Get it.
- Use the Design Day booklet team page Word template in this folder.
- Read the comments below about your team’s artwork.
- Leave the artwork layout basically as is.
- Redo your artwork if and as requested.
- If necessary...
 - ...provide new high-resolution png originals appropriately numbered and named
 - ...change pictures in your template to reflect any new artwork. Do so by right-clicking on the artwork and selecting “Change Picture > From a File...” to preserve the size and location.
- If necessary, place your new artwork in your project page team and in your team assets folder.
- If necessary, update your Word template and artwork files.
- Zip up your template assets folder using Windows zip.
- Upload your zipped assets folder to DD Assets Zip Files w Artwork Updates 1 in our Microsoft Teams General Channel file space and your team’s private file space by 11:59 p.m., Saturday, February 25.



Team Ally Artwork Feedback (Luke)

Original Artwork

Feedback

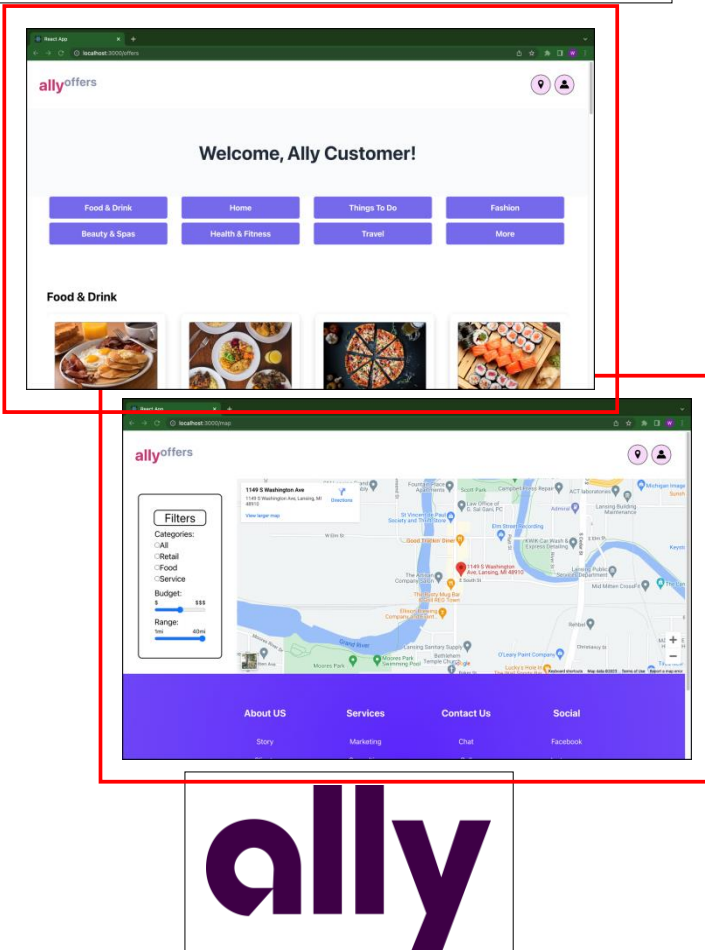
financial digital consumers, in their customer g an ally

lication, vibrant. well as experience Offers e which

upload available driving omalized pending e any rs.

itude of pons on interests ws Ally sinesses

ot and is ts with machine



- Your artwork and layout are basically good.
- I resized and moved things slightly.
- Leave the artwork layout as it is now. Don't resize or move anything.
- I posted an updated version of your assets zip file.
- If you made any corrections in your original submission other than the project description (like to sponsor names) , check that I corrected them. If not, correct them.

If there are more corrections other than to the project description, make and highlight them, and upload an updated assets zip file.

If there are no more corrections, don't submit or upload anything.

- Nice work! Thanks!

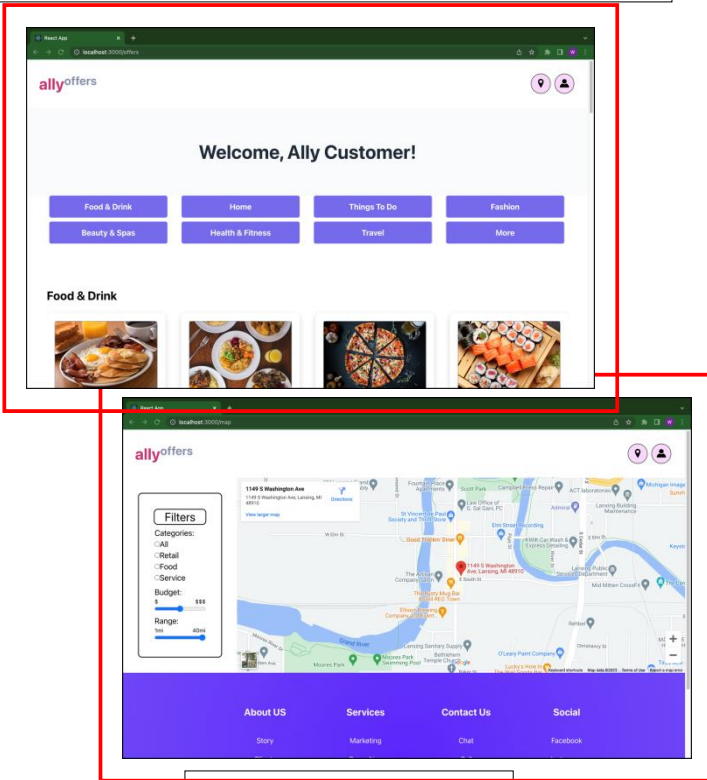


Team Ally Artwork Feedback (Luke)

Original Artwork

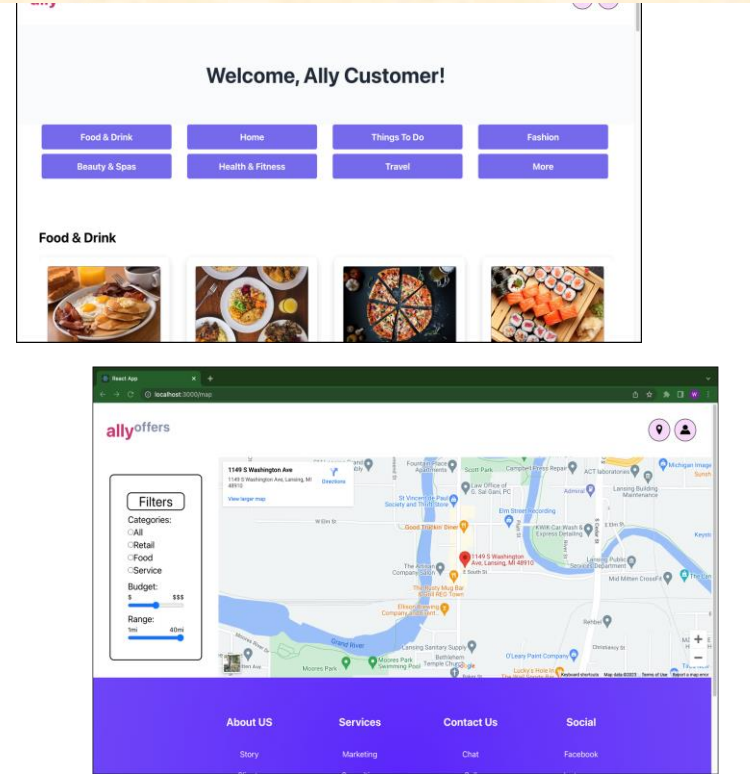
Modified Artwork

financial digital consumers, in their customer engagement an ally. vibrant. well as experience. Offers which upload available driving normalized pending any rs. itude of pons on interests ws Ally sinesses ot and is ts with machine



ally

financial digital consumers, in their customer engagement an ally. vibrant. well as experience with system, in turn, upload available driving normalized pending any rs. itude of pons on interests ws Ally sinesses ot and is ts with machine



ally



Team Amazon Artwork Feedback (Griffin)

Original Artwork

Feedback

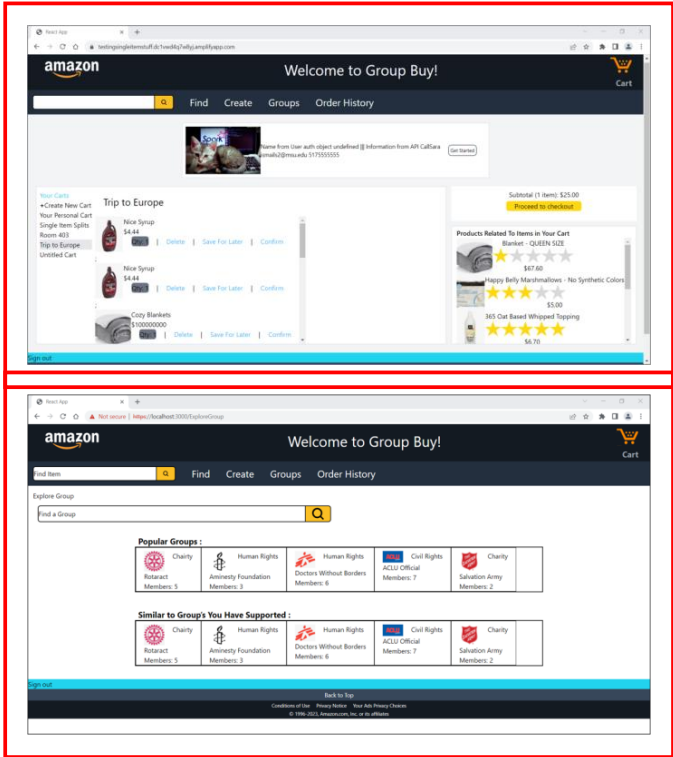
s grown
4 by Jeff
lustries,
artificial

products
toppers
is to be
possible.
enhance
s must
y to do

opping
ses with
sers can
harged.
product
ucts in

y items
process
radually,

robust
n AWS
by API
ions are



- Your artwork and layout are basically good.
- I resized and moved things slightly.
- Leave the artwork layout as it is now. Don't resize or move anything.
- I posted an updated version of your assets zip file.
- If you made any corrections in your original submission other than the project description (like to sponsor names), check that I corrected them. If not, correct them.

If there are more corrections other than to the project description, make and highlight them, and upload an updated assets zip file.

If there are no more corrections, don't submit or upload anything.

- Nice work! Thanks!



Team Amazon Artwork Feedback (Griffin)

Original Artwork

Modified Artwork

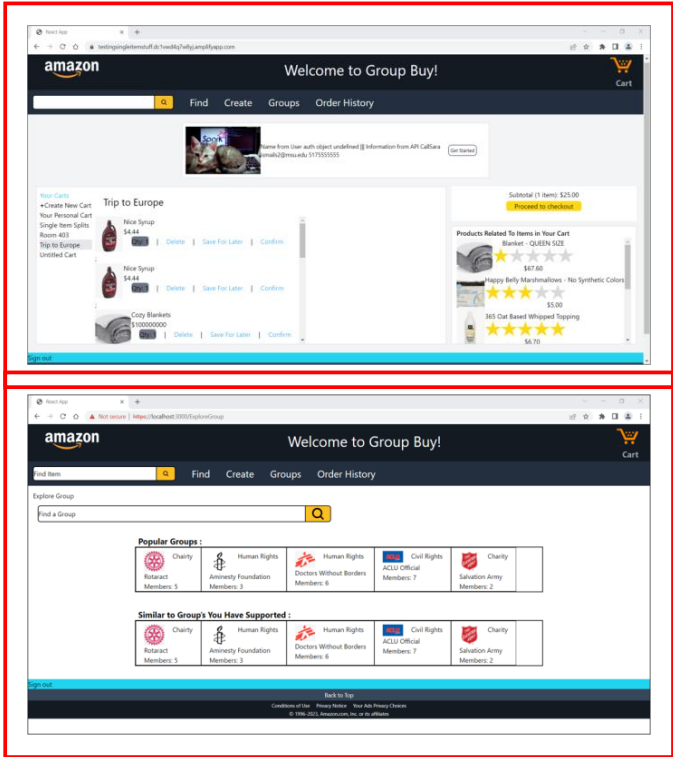
s grown
4 by Jeff
lustries,
artificial

roducts
oppers
s to be
ossible.
enhance
s must
y to do

opping
ses with
sers can
harged.
product
ucts in

y items
process
idually,

robust
n AWS
by API
ions are



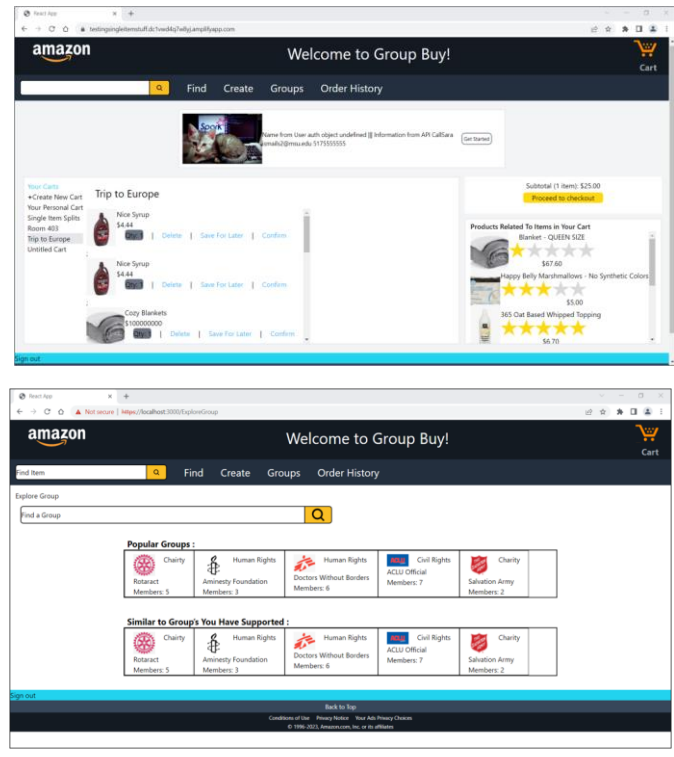
s grown
4 by Jeff
lustries,
artificial

roducts
oppers
s to be
ossible.
enhance
s must
y to do

opping
ses with
sers can
harged.
product
ucts in

y items
process
idually,

robust
n AWS
by API
ions are



Team Anthropocene Institute Artwork Feedback (Griffin)

Original Artwork

Feedback



- Your artwork and layout are basically good.
- I resized and moved things slightly.
- Leave the artwork layout as it is now. Don't resize or move anything.
- I posted an updated version of your assets zip file.
- If you made any corrections in your original submission other than the project description (like to sponsor names) , check that I corrected them. If not, correct them.

If there are more corrections other than to the project description, make and highlight them, and upload an updated assets zip file.

If there are no more corrections, don't submit or upload anything.

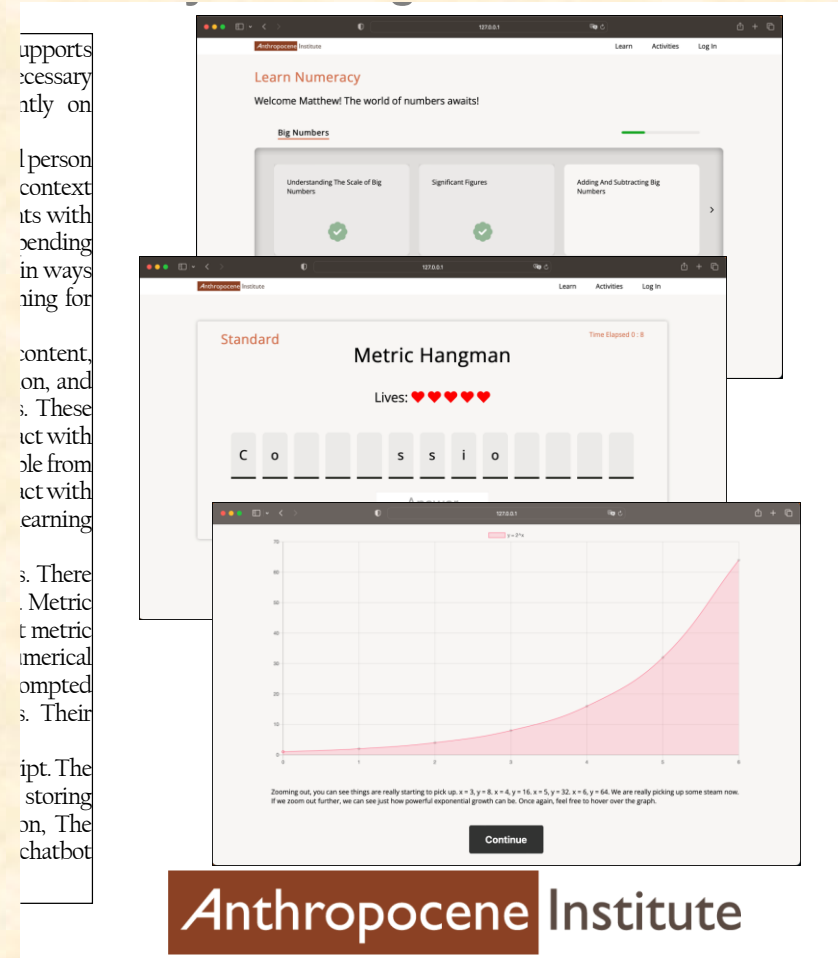
- Nice work! Thanks!



Team Anthropocene Institute Artwork Feedback (Griffin)

Original Artwork

Modified Artwork



Team Auto-Owners Artwork Feedback (Tommy)

Original Artwork

Feedback

company
presented
provides

ousands
These
d what

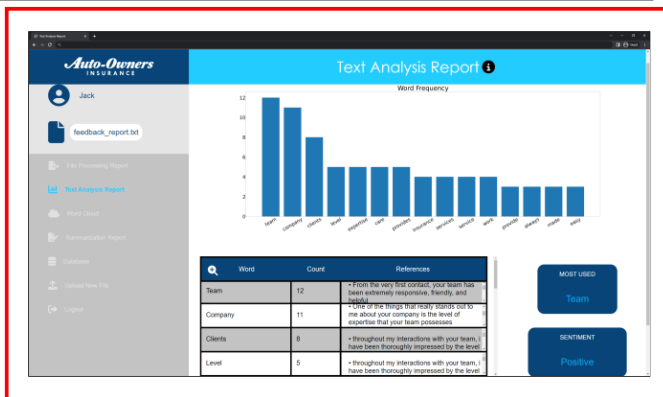
ally to
d time-

he time
em and
v.
marized
ent and
ntiment

e which
etween
report.
viously

figuring
it. This
changes
quality

CSS and
n Flask.



- Your artwork and layout are basically good.
- I may have resized and moved things slightly.
- Leave the artwork layout as it is now. Don't resize or move anything.
- I posted an updated version of your assets zip file.
- If you made any corrections in your original submission other than the project description (like to sponsor names) , check that I corrected them. If not, correct them.

If there are more corrections other than to the project description, make and highlight them, and upload an updated assets zip file.

If there are no more corrections, don't submit or upload anything.

- Nice work! Thanks!

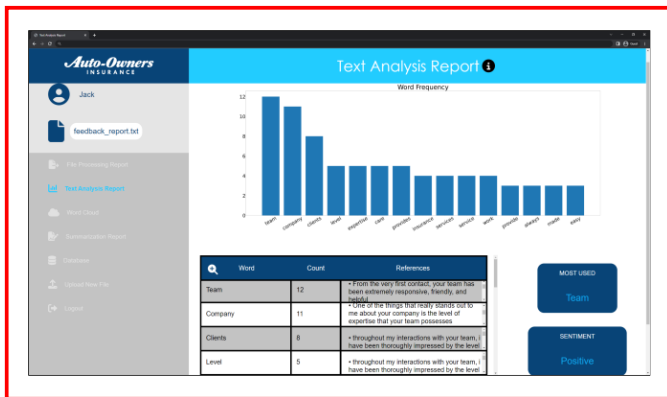


Team Auto-Owners Artwork Feedback (Tommy)

Original Artwork

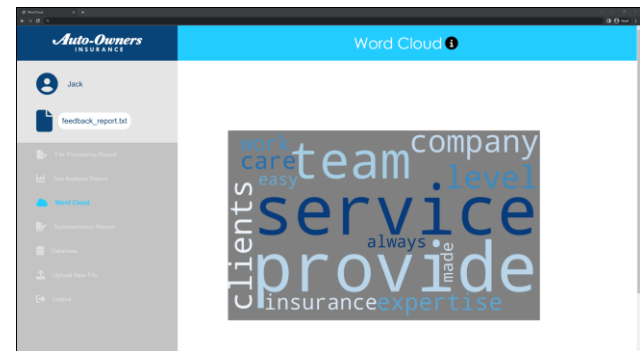
Modified Artwork

company presented provides thousands. These d what ally to d time- he time em and v. marized ent and ntiment e which between report. eviously figuring it. This changes quality CSS and n Flask.



Auto-Owners
INSURANCE

company presented provides thousands. These d what ally to d time- he time em and v. marized ent and ntiment e which between report. eviously figuring it. This changes quality CSS and n Flask.

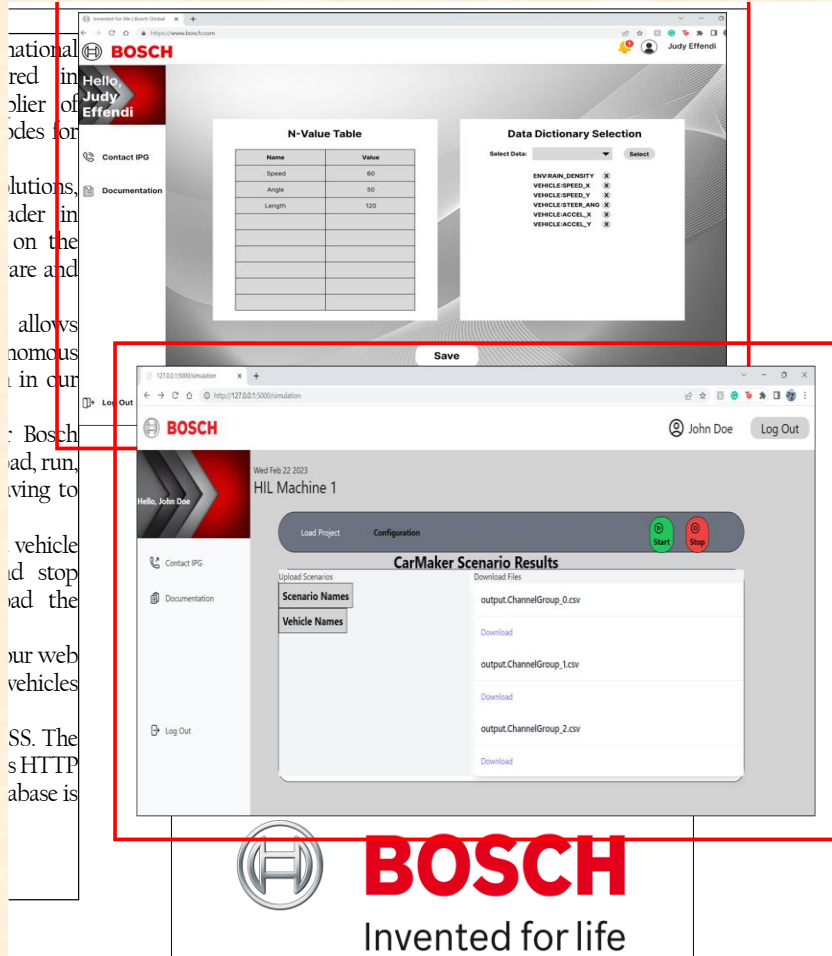


Auto-Owners
INSURANCE



Team Bosch Artwork Feedback (Griffin) Original Artwork

Feedback

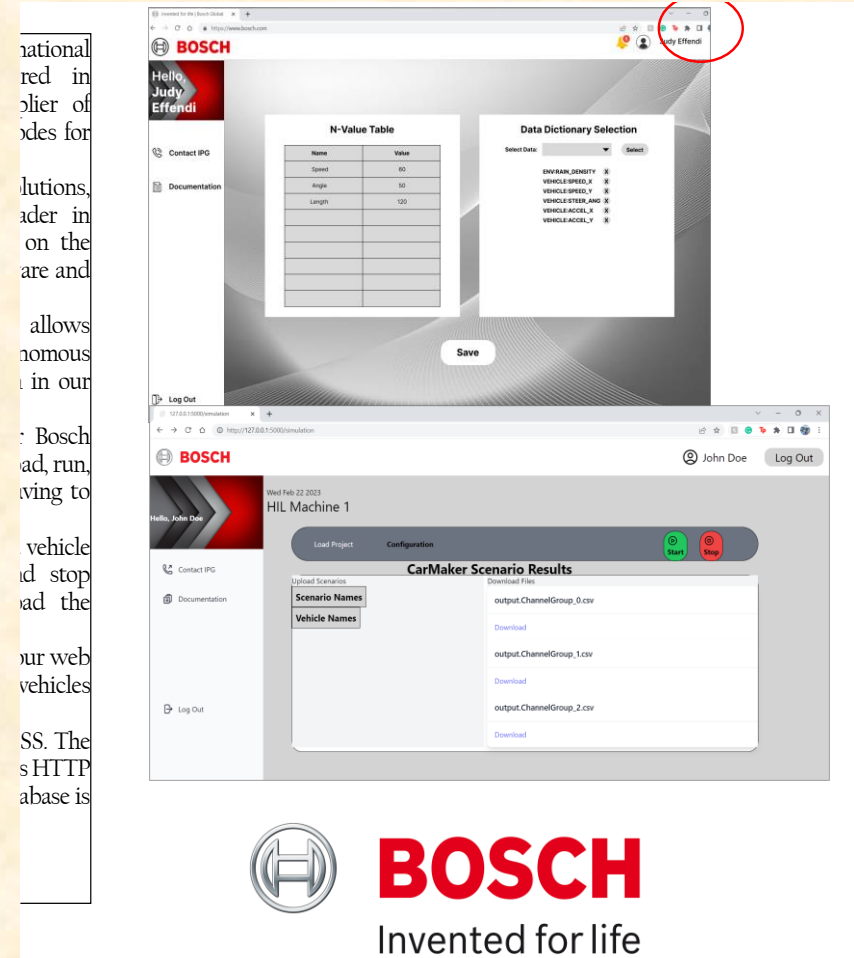
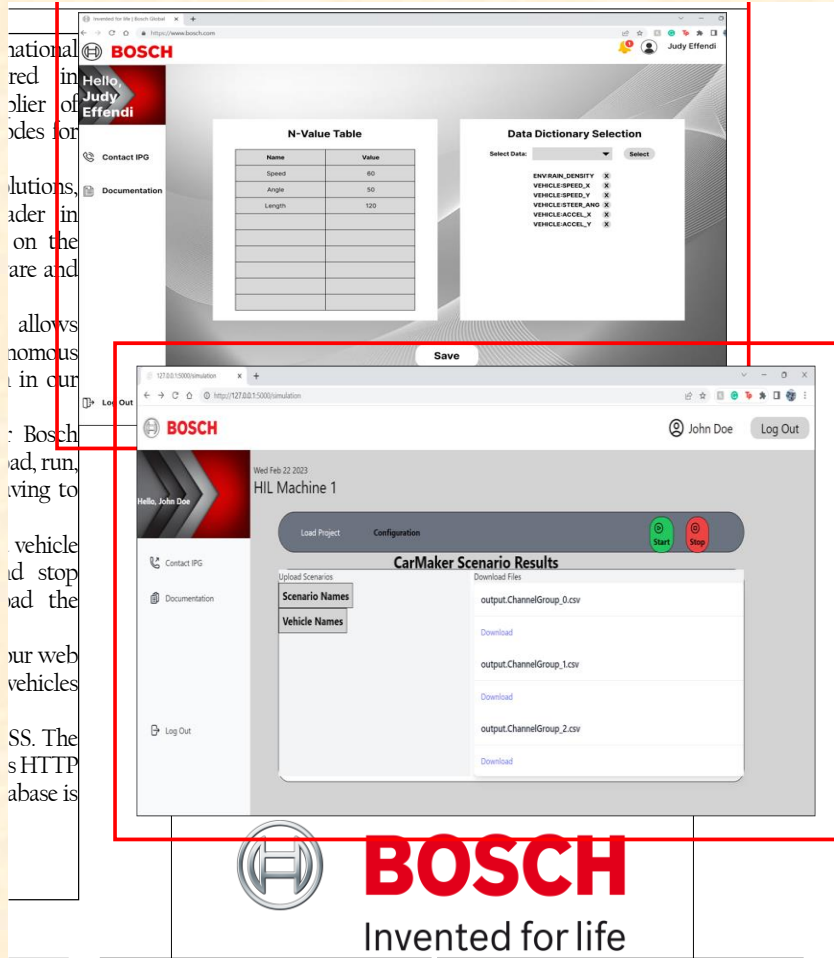


- Your artwork needs work.
- The basic idea and layout of your artwork are fine, but...
- The two pieces of artwork are of the same web app, but they have differing aspect ratios.
- The right side of the top artwork was cropped.
- The artwork in your docx file does not match the png files that you submitted. Fix this. Create two new pieces of artwork. Make sure they have the same aspect ratio.
- Your artwork blends into the white background. You were supposed to have added a border using PowerPoint. Read the directions. I added borders for you. It'll cost you. If you update this artwork, make sure to add borders per the instructions.
- If you made any corrections in your original submission other than the project description (like to sponsor names), check that I corrected them. If not, correct them.
- Make the appropriate corrections and upload an updated assets zip file.

Team Bosch Artwork Feedback (Griffin)

Original Artwork

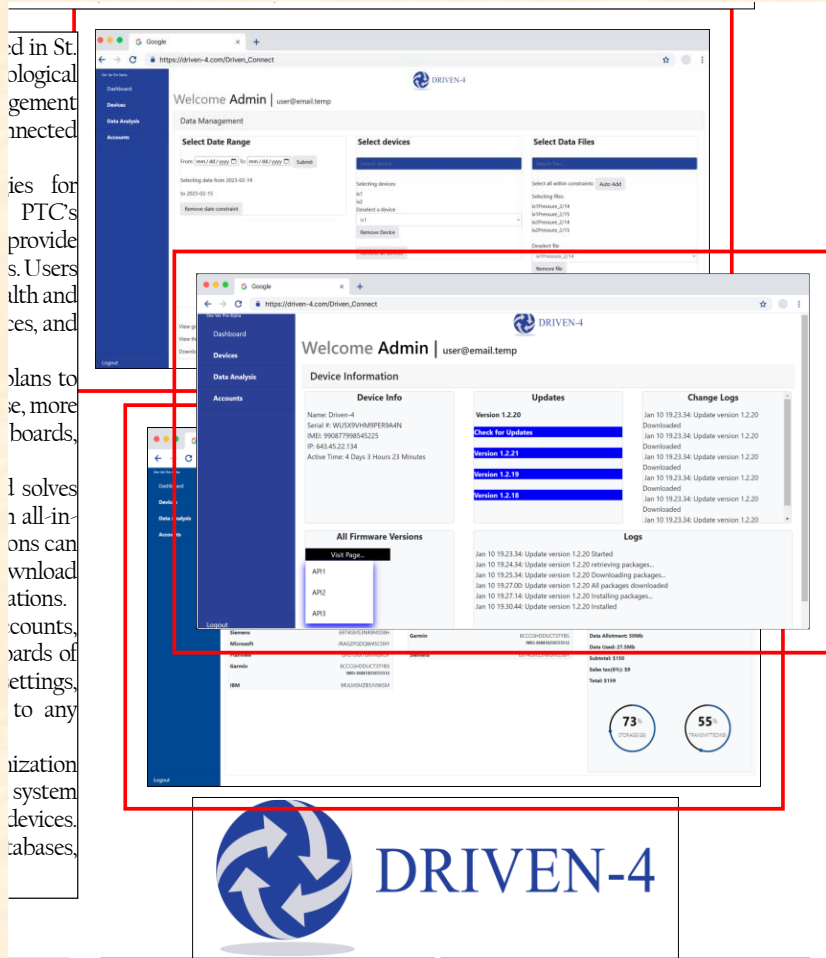
Modified Artwork



Team DRIVEN-4 Artwork Feedback (Tommy)

Original Artwork

Feedback



- Your artwork and layout are basically good.
- I may have resized and moved things slightly.
- Leave the artwork layout as it is now. Don't resize or move anything.
- I posted an updated version of your assets zip file.
- If you made any corrections in your original submission other than the project description (like to sponsor names) , check that I corrected them. If not, correct them.

If there are more corrections other than to the project description, make and highlight them, and upload an updated assets zip file.

If there are no more corrections, don't submit or upload anything.

- Nice work! Thanks!



Team DRIVEN-4 Artwork Feedback (Tommy)

Original Artwork

Modified Artwork

DRIVEN-4

DRIVEN-4

Team Evolutio Artwork Feedback (Griffin)

Original Artwork

Feedback



- Your artwork and layout are basically good.
- I may have resized and moved things slightly.
- Leave the artwork layout as it is now. Don't resize or move anything.
- I posted an updated version of your assets zip file.
- If you made any corrections in your original submission other than the project description (like to sponsor names), check that I corrected them. If not, correct them.

If there are more corrections other than to the project description, make and highlight them, and upload an updated assets zip file.

If there are no more corrections, don't submit or upload anything.

- Nice work! Thanks!

Team Evolutio Artwork Feedback (Griffin)

Original Artwork

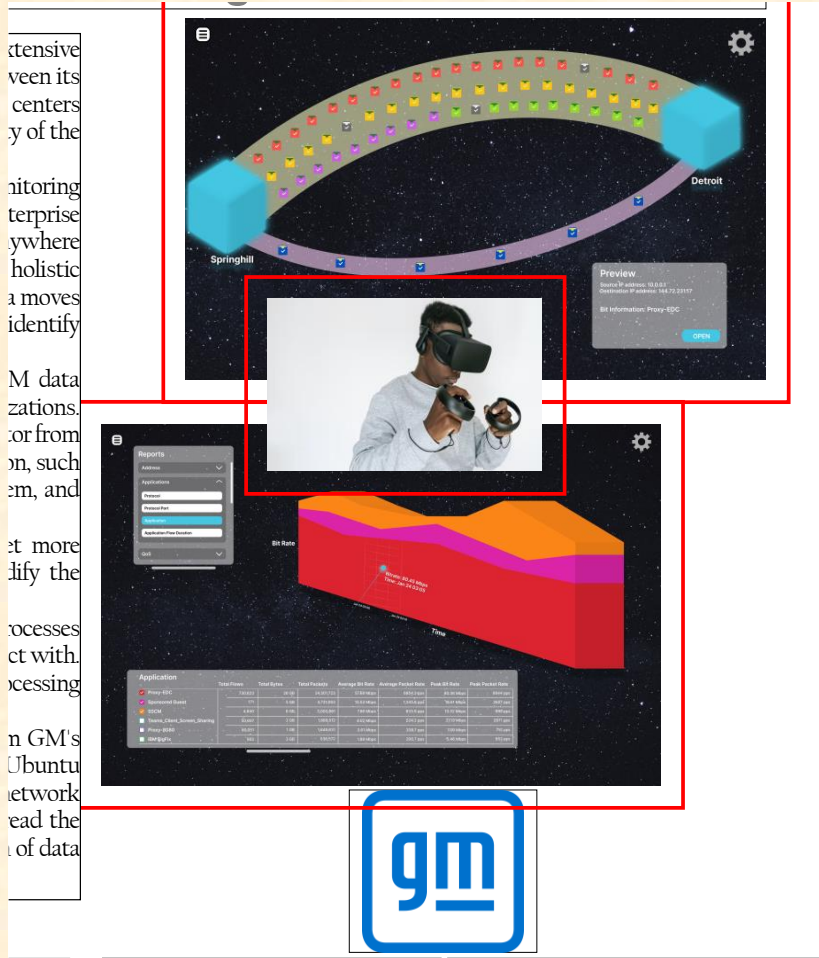
Modified Artwork



Team GM 1 Artwork Feedback (Luke)

Original Artwork

Feedback

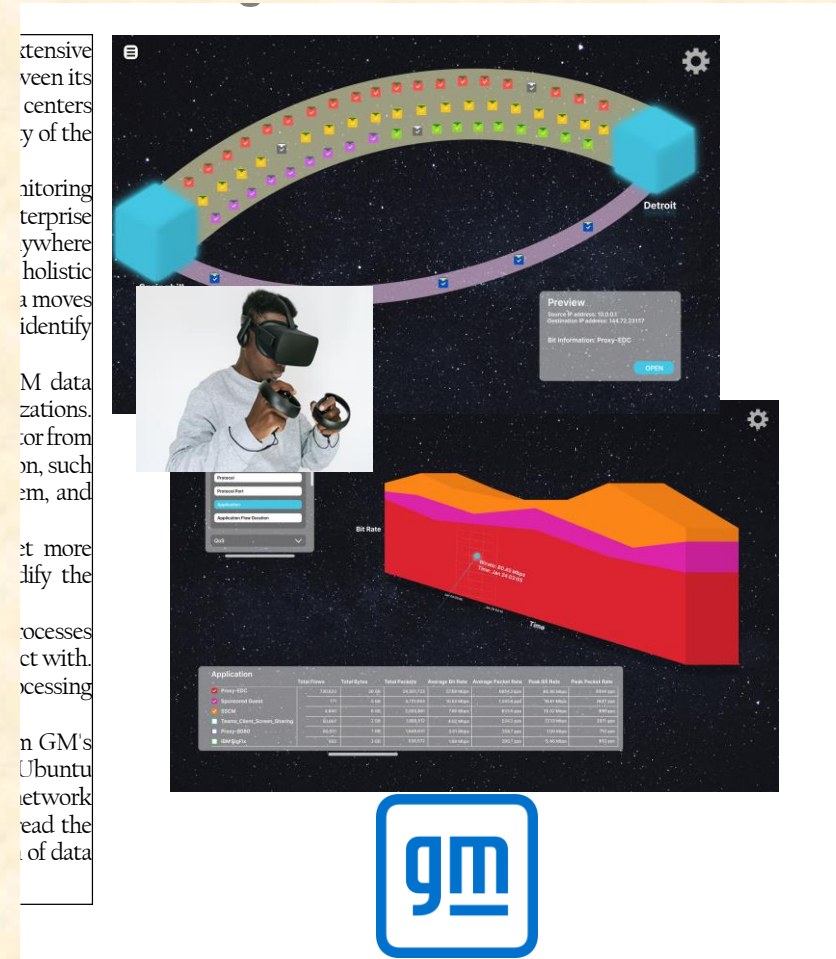
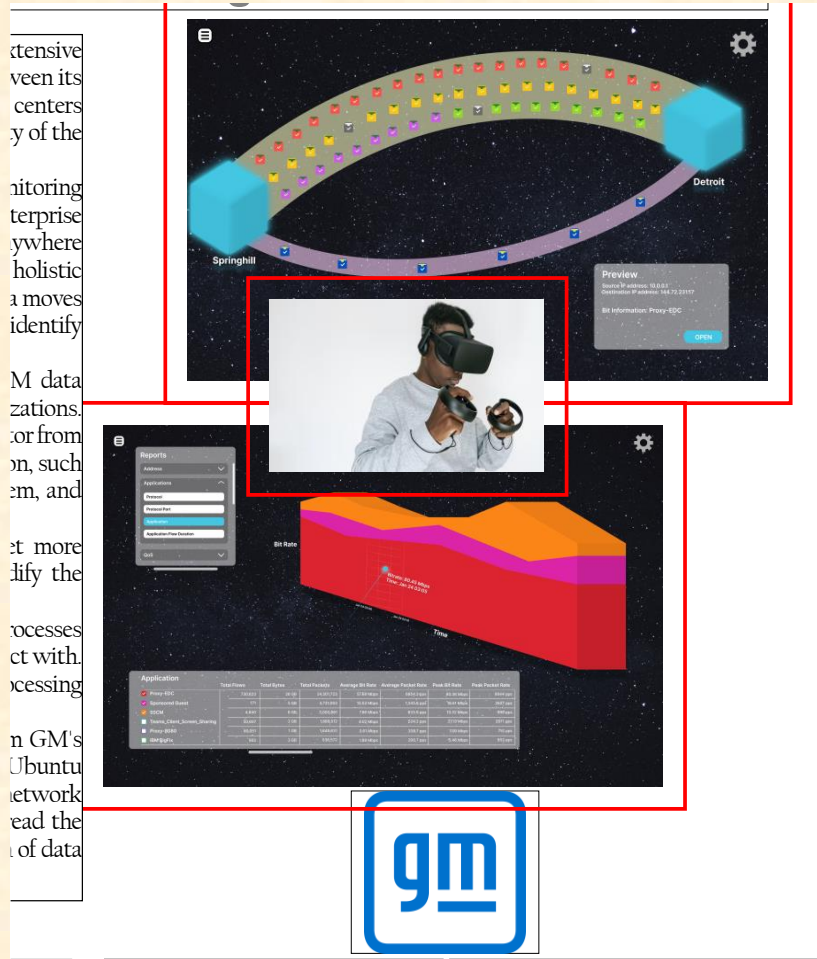


- Your artwork looks like your screen mockups. If they are, replace them by actual captures.
- The middle artwork of the person was NOT a png file. And, it's too low res. Replace with an actual png file which is hi rest.
- When you fix this leave the layout as is. Replace the images by right-clicking on them.
- If you made any corrections in your original submission other than the project description (like to sponsor names) , check that I corrected them. If not, correct them.
- Make the appropriate corrections and upload an updated assets zip file.

Team GM 1 Artwork Feedback (Luke)

Original Artwork

Modified Artwork

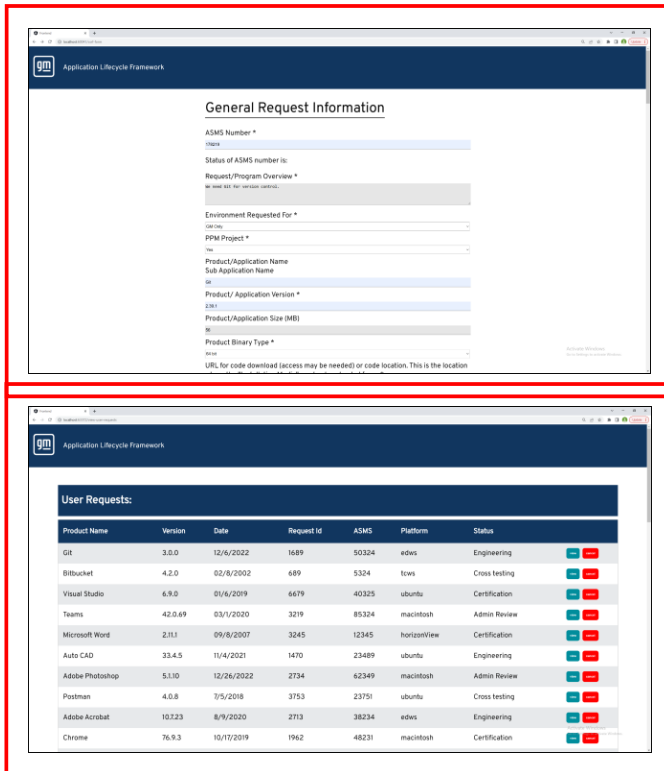


Team GM 2 Artwork Feedback (Luke)

Original Artwork

Feedback

cturing
the top
ven the
during
ure and
lication
ove to a
y of the
Motors
status of
testers
y device
start the
istrator
ell as an
es with
keep all
rates a
nterface
fication
AL, and
ning on
he back
Boot to



- Your artwork and layout are basically good.
- I may have resized and moved things slightly.
- Leave the artwork layout as it is now. Don't resize or move anything.
- I posted an updated version of your assets zip file.
- If you made any corrections in your original submission other than the project description (like to sponsor names), check that I corrected them. If not, correct them.

If there are more corrections other than to the project description, make and highlight them, and upload an updated assets zip file.

If there are no more corrections, don't submit or upload anything.

- Nice work! Thanks!

Team GM 2 Artwork Feedback (Luke)

Original Artwork

Modified Artwork

cturing
the top
ven the
during
ure and
lication
ove to a
y of the
Motors
tatus of
testers
y device
tart the
istrator
ell as an
keep all
rates a
nterface
fication
/L, and
ning on
he back
Boot to

General Request Information

ASMS Number *
Title

Status of ASMS Number is:
Request/Program Overview *
We need not fill version details.

Environment Requested For *
OS/OS:

PPM Project *
Title

Product/Application Name
Sub-Application Name
ID

Product/ Application Version *
234

Product/Application Size (MB)
10

Product Binary Type *
None

URL, for code download (access may be needed) or code location. This is the location

User Requests:

Product Name	Version	Date	Request Id	ASMS	Platform	Status
Git	3.0.0	12/6/2022	1689	50324	edws	Engineering
Bitbucket	4.2.0	02/8/2002	689	5324	tcws	Cross testing
Visual Studio	6.8.0	01/6/2019	6679	40325	ubuntu	Certification
Teams	42.0.69	03/1/2020	3219	85324	macintosh	Admin Review
Microsoft Word	2.11.1	09/8/2007	3245	12345	horizonView	Certification
Auto CAD	33.4.5	11/4/2021	1470	23489	ubuntu	Engineering
Adobe Photoshop	5.1.10	12/26/2022	2734	62349	macintosh	Admin Review
Postman	4.0.8	7/5/2018	3753	23751	ubuntu	Cross testing
Adobe Acrobat	10.2.23	8/9/2020	2713	38234	edws	Engineering
Chrome	76.9.3	10/17/2019	1962	48231	macintosh	Certification



cturing
the top
ven the
during
ure and
lication
ove to a
y of the
Motors
tatus of
testers
y device
tart the
istrator
ell as an
keep all
rates a
nterface
fication
/L, and
ning on
he back
Boot to

General Request Information

ASMS Number *
Title

Status of ASMS Number is:
Request/Program Overview *
We need not fill version details.

Environment Requested For *
OS/OS:

PPM Project *
Title

Product/Application Name
Sub-Application Name
ID

Product/ Application Version *
234

Product/Application Size (MB)
10

Product Binary Type *
None

URL, for code download (access may be needed) or code location. This is the location

User Requests:

Product Name	Version	Date	Request Id	ASMS	Platform	Status
Git	3.0.0	12/6/2022	1689	50324	edws	Engineering
Bitbucket	4.2.0	02/8/2002	689	5324	tcws	Cross testing
Visual Studio	6.8.0	01/6/2019	6679	40325	ubuntu	Certification
Teams	42.0.69	03/1/2020	3219	85324	macintosh	Admin Review
Microsoft Word	2.11.1	09/8/2007	3245	12345	horizonView	Certification
Auto CAD	33.4.5	11/4/2021	1470	23489	ubuntu	Engineering
Adobe Photoshop	5.1.10	12/26/2022	2734	62349	macintosh	Admin Review
Postman	4.0.8	7/5/2018	3753	23751	ubuntu	Cross testing
Adobe Acrobat	10.2.23	8/9/2020	2713	38234	edws	Engineering
Chrome	76.9.3	10/17/2019	1962	48231	macintosh	Certification



Team Kellogg's Artwork Feedback (Tommy)

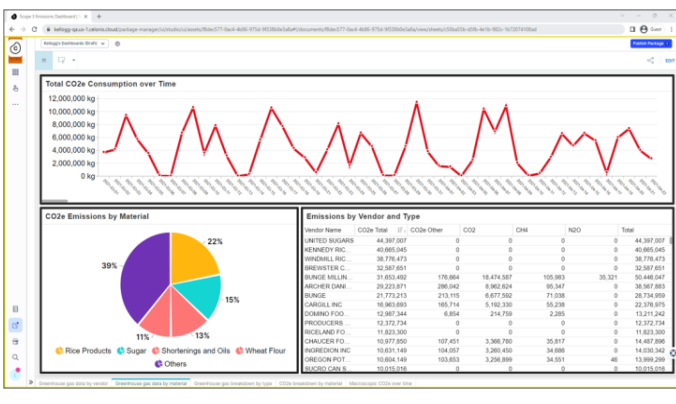
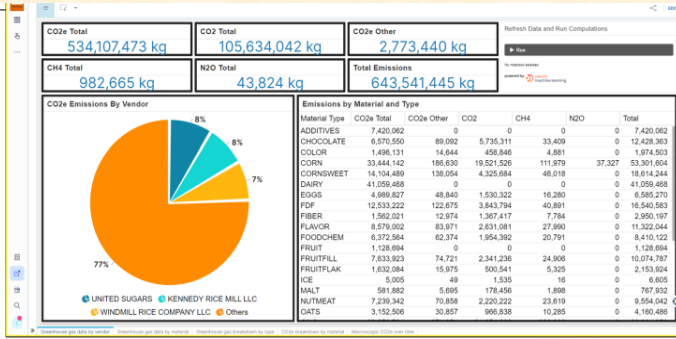
Original Artwork

Feedback

s both
re most
al well-
os® and

through
scope 1
scope 3
ons that
waste
cts, etc.
uses an
ted and
y these
e format

t GHG
Celonis
ployees
ew and
vendors.
omation
such as
nts are
sions.
Celonis
tebook
perform
website
: data is
zed.



- Your artwork and layout are basically good.
- I may have resized and moved things slightly.
- Leave the artwork layout as it is now. Don't resize or move anything.
- I posted an updated version of your assets zip file.
- If you made any corrections in your original submission other than the project description (like to sponsor names) , check that I corrected them. If not, correct them.

If there are more corrections other than to the project description, make what you can and highlight them, and upload an updated assets zip file.

If there are no more corrections, don't submit or upload anything.

- Nice work! Thanks!



Team Kellogg's Artwork Feedback (Tommy)

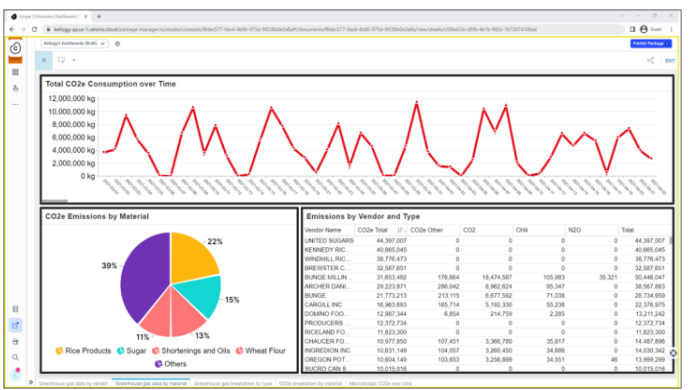
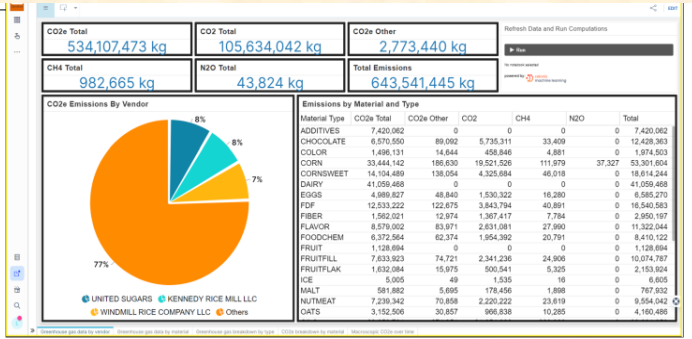
Original Artwork

Modified Artwork

s both
re most
al well-
os® and

through
scope 1
scope 3
ons that
waste
cts, etc.
uses an
nted and
y these
e format

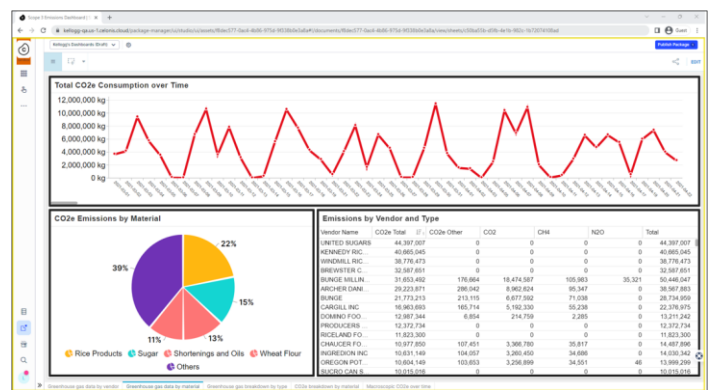
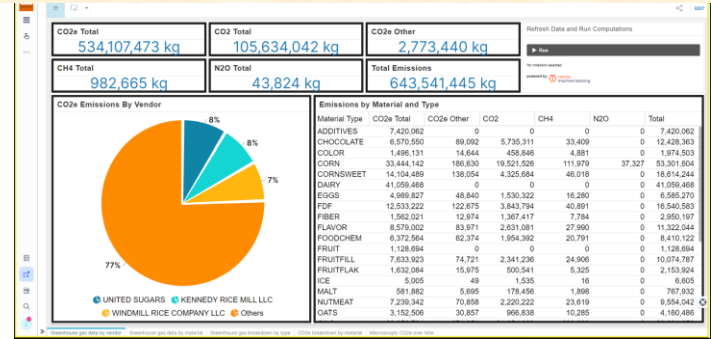
t GHG
Celonis
ploys
ew and
vendors.
omation
such as
nts are
sions.
Celonis
tebook
perform
website
: data is
zed.



s both
re most
al well-
os® and

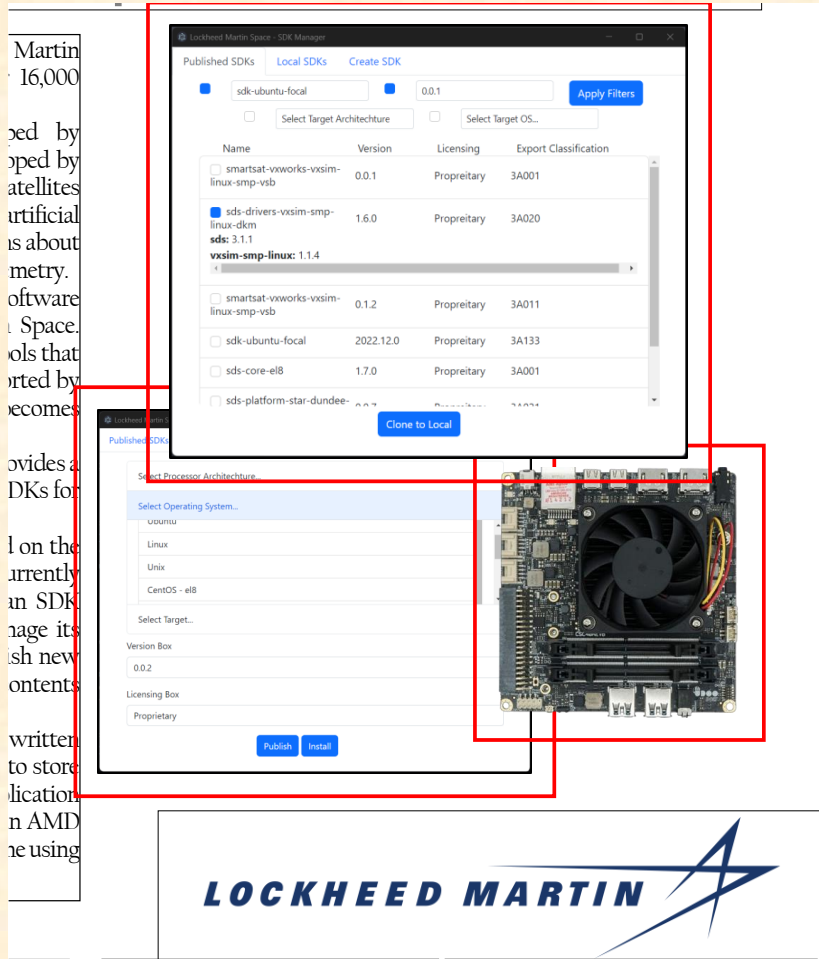
through
scope 1
scope 3
ons that
waste
cts, etc.
uses an
nted and
y these
e format

t GHG
Celonis
ploys
ew and
vendors.
omation
such as
nts are
sions.
Celonis
tebook
perform
website
: data is
zed.



Team Lockheed Martin Space Artwork Feedback (Tommy) Original Artwork

Feedback



- Your artwork and layout are basically good.
- I may have resized and moved things slightly.
- Leave the artwork layout as it is now. Don't resize or move anything.
- I posted an updated version of your assets zip file.
- If you made any corrections in your original submission other than the project description (like to sponsor names), check that I corrected them. If not, correct them.

If there are more corrections other than to the project description, make and highlight them, and upload an updated assets zip file.

If there are no more corrections, don't submit or upload anything.

- Nice work! Thanks!



Team Lockheed Martin Space Artwork Feedback (Tommy)

Original Artwork

Modified Artwork

Martin 16,000
oped by
opped by
artificial
is about
metry.
oftware
Space.
ols that
orted by
becomes
vides a
DKs for
l on the
currently
in SDK
nage its
sh new
ontents
written
to store
lication
n AMD
ne using

Name	Version	Licensing	Export Classification
smartsat-vworks-vxsim-linux-smp-vsib	0.0.1	Proprietary	3A001
sds-drivers-vxsim-smp-linux-dkm	1.6.0	Proprietary	3A020
vxsim-smp-linux	1.1.4		
smartsat-vworks-vxsim-linux-smp-vsib	0.1.2	Proprietary	3A011
sdk-ubuntu-focal	2022.12.0	Proprietary	3A133
sds-core-elB	1.7.0	Proprietary	3A001
sds-platform-star-dundee			

LOCKHEED MARTIN

Martin 16,000
oped by
opped by
artificial
is about
metry.
oftware
Space.
ols that
orted by
becomes
vides a
DKs for
l on the
currently
in SDK
nage its
sh new
ontents
written
to store
lication
n AMD
ne using

Name	Version	Licensing	Export Classification
smartsat-vworks-vxsim-linux-smp-vsib	0.0.1	Proprietary	3A001
sds-drivers-vxsim-smp-linux-dkm	1.6.0	Proprietary	3A020
vxsim-smp-linux	1.1.4		
smartsat-vworks-vxsim-linux-smp-vsib	0.1.2	Proprietary	3A011
sdk-ubuntu-focal	2022.12.0	Proprietary	3A133
sds-core-elB	1.7.0	Proprietary	3A001
sds-platform-star-dundee			

LOCKHEED MARTIN

Team Magna Artwork Feedback (Tommy)

Original Artwork

Feedback



- As we discussed, this is the artwork from last semester's team. Provide updates of working software ASAP.
- I resized and moved things slightly.
- Leave the artwork layout as it is now. Don't resize or move anything.
- I posted an updated version of your assets zip file.
- If you made any corrections in your original submission other than the project description (like to sponsor names) , check that I corrected them. If not, correct them.

If there are more corrections other than to the project description, make and highlight them, and upload an updated assets zip file.

If there are no more corrections, don't submit or upload anything. Just contact me when you have updated artwork.



Team Magna Artwork Feedback (Tommy)

Original Artwork

Modified Artwork

supplier
n Troy,
0 for 20
rurer in

related
rates an
fleet of
without
cannot
reduc

data and
incre

app to
oot data
such as
e speed.

Service
ned and
to both
eated in
te using

The original dashboard screenshot shows a navigation bar with 'MAGNA' and menu items: 'Deliveries', 'Emergency Stops', 'Vehicles', 'Vehicle Logs', and 'Logout (admin@magna.com)'. Below the navigation bar are tabs for 'Daily', 'Weekly', 'Monthly', and 'Lifetime'. A 'Controls' section includes 'Add the Vehicle ID' and 'Add the Date' (set to 2022-07-05). The main content area features a 'Total Trip Time' donut chart showing 92.46M, a 'Percentage of Trips with Emergency Stops and Reports' donut chart, a 'Average Battery Consumption Percentage' horizontal bar chart, a 'Distance Traveled' bar chart, and an 'Average Speed' line chart. A photograph of a white 'BROOKLYN PIZZA' delivery vehicle is positioned at the bottom left. The Magna logo is at the bottom center.

supplier
n Troy,
0 for 20
rurer in

related
rates an
fleet of
without
cannot
reduc

data and
incre

app to
oot data
such as
e speed.

Service
ned and
to both
eated in
te using

The modified dashboard screenshot maintains the same navigation and controls as the original. However, the layout is cleaner, with the 'Total Trip Time' and 'Percentage of Trips with Emergency Stops and Reports' charts placed side-by-side at the top. The 'Average Battery Consumption Percentage' and 'Distance Traveled' charts are also side-by-side below them. The 'Average Speed' chart is now a separate, smaller chart at the bottom right. A different photograph of a white 'BROOKLYN PIZZA' delivery vehicle is used at the bottom left. The Magna logo remains at the bottom center.

Team Meijer Artwork Feedback (Tommy)

Original Artwork

Feedback



- Your artwork and layout are basically good.
- I resized and moved things slightly.
- Leave the artwork layout as it is now. Don't resize or move anything.
- I posted an updated version of your assets zip file.
- If you made any corrections in your original submission other than the project description (like to sponsor names) , check that I corrected them. If not, correct them.

If there are more corrections other than to the project description, make and highlight them, and upload an updated assets zip file.

If there are no more corrections, don't submit or upload anything.

- Nice work! Thanks!



Team Meijer Artwork Feedback (Tommy)

Original Artwork

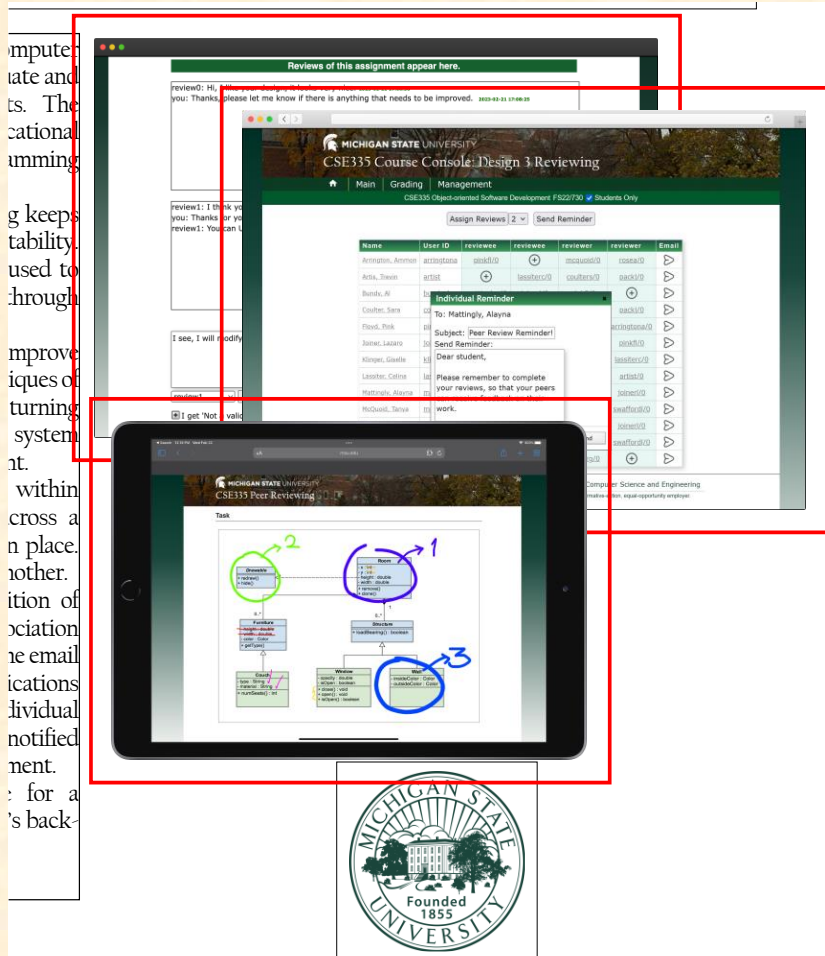
Modified Artwork



Team Michigan State University CSE Artwork Feedback (Griffin)

Original Artwork

Feedback



- Your artwork and layout are basically good.
- Leave the artwork layout as it is now. Don't resize or move anything.
- I posted an updated version of your assets zip file.
- If you made any corrections in your original submission other than the project description (like to sponsor names), check that I corrected them. If not, correct them.

If there are more corrections other than to the project description, make and highlight them, and upload an updated assets zip file.

If there are no more corrections, don't submit or upload anything.

- Nice work! Thanks!



Team Michigan State University CSE Artwork Feedback (Griffin)

Original Artwork

Modified Artwork

computer
date and
ts. The
cational
umming

g keeps
stability.
used to
through

improve
iques of
turning
system
nt.

within
cross a
n place.
other.
ition of
ociation
ne email
ications
dividual
notified
ment.
: for a
s' back-

Michigan State University
CSE335 Course Console: Design 3 Reviewing

Reviews of this assignment appear here.

review0: Hi, I like your design, it looks very nice. Please let me know if there is anything that needs to be improved.

review1: I think you did a good job. Please let me know if there is anything that needs to be improved.

review1: You can U

Name	User ID	reviews	reviews	reviewer	reviewer	Email
Arrington, Armon	arringtona	stuckID	stuckID	mscoulter@	stuckID	
Arts, Theron	artsT	stuckID	stuckID	mscoulter@	stuckID	
Banda, Al	stuckID	stuckID	stuckID	stuckID	stuckID	
Coulter, Sara	stuckID	stuckID	stuckID	stuckID	stuckID	
Flood, Pink	stuckID	stuckID	stuckID	stuckID	stuckID	
Janak, Laksh	stuckID	stuckID	stuckID	stuckID	stuckID	
Klinger, Giselle	stuckID	stuckID	stuckID	stuckID	stuckID	
Lasater, Colina	stuckID	stuckID	stuckID	stuckID	stuckID	
Mattaroli, Alyana	stuckID	stuckID	stuckID	stuckID	stuckID	
McQuill, Tanya	stuckID	stuckID	stuckID	stuckID	stuckID	

Individual Reminder
To: Mattingly, Alyna
Subject: Peer Review Reminder!
Send Reminder:
Dear student,
Please remember to complete your reviews, so that your peers can receive feedback on their work.

Task

computer
date and
ts. The
cational
umming

g keeps
stability.
used to
through

improve
iques of
turning
system
nt.

within
cross a
n place.
other.
ition of
ociation
ne email
ications
dividual
notified
ment.
: for a
s' back-

Michigan State University
CSE335 Course Console: Design 3 Reviewing

Reviews of this assignment appear here.

review0: Hi, I like your design, it looks very nice. Please let me know if there is anything that needs to be improved.

review1: I think you did a good job. Please let me know if there is anything that needs to be improved.

review1: You can U

Name	User ID	reviews	reviews	reviewer	reviewer	Email
Arrington, Armon	arringtona	stuckID	stuckID	mscoulter@	stuckID	
Arts, Theron	artsT	stuckID	stuckID	mscoulter@	stuckID	
Banda, Al	stuckID	stuckID	stuckID	stuckID	stuckID	
Coulter, Sara	stuckID	stuckID	stuckID	stuckID	stuckID	
Flood, Pink	stuckID	stuckID	stuckID	stuckID	stuckID	
Janak, Laksh	stuckID	stuckID	stuckID	stuckID	stuckID	
Klinger, Giselle	stuckID	stuckID	stuckID	stuckID	stuckID	
Lasater, Colina	stuckID	stuckID	stuckID	stuckID	stuckID	
Mattaroli, Alyana	stuckID	stuckID	stuckID	stuckID	stuckID	
McQuill, Tanya	stuckID	stuckID	stuckID	stuckID	stuckID	

Individual Reminder
To: Mattingly, Alyna
Subject: Peer Review Reminder!
Send Reminder:
Dear student,
Please remember to complete your reviews, so that your peers can receive feedback on their work.

Task

Team Michigan State University Linguistics Artwork Feedback (Luke)

Original Artwork

Feedback



- Your artwork and layout are basically good.
- I resized and moved things slightly.
- Leave the artwork layout as it is now. Don't resize or move anything.
- I posted an updated version of your assets zip file.
- If you made any corrections in your original submission other than the project description (like to sponsor names), check that I corrected them. If not, correct them.

If there are more corrections other than to the project description, make and highlight them, and upload an updated assets zip file.

If there are no more corrections, don't submit or upload anything.

- Nice work! Thanks!



Team Michigan State University Linguistics Artwork Feedback (Luke)

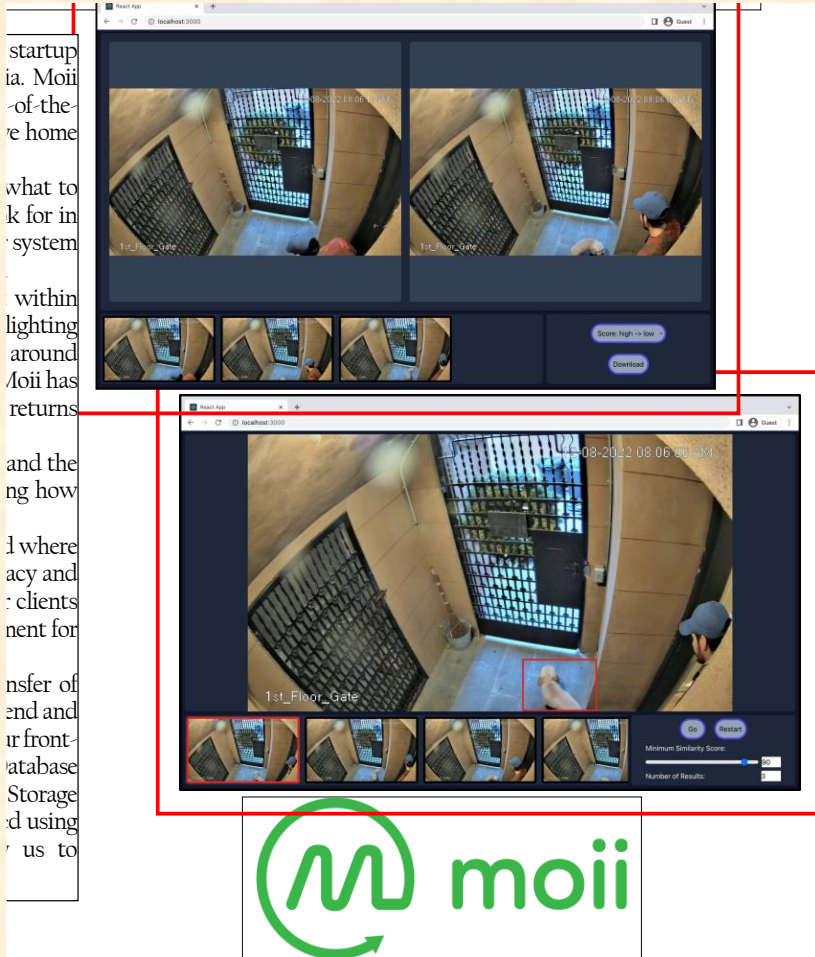
Original Artwork

Modified Artwork



Team Moii Artwork Feedback (Tommy) Original Artwork

Feedback



- Your artwork and layout are basically good.
- Leave the artwork layout as it is now. Don't resize or move anything.
- I posted an updated version of your assets zip file.
- If you made any corrections in your original submission other than the project description (like to sponsor names) , check that I corrected them. If not, correct them.

If there are more corrections other than to the project description, make and highlight them, and upload an updated assets zip file.

If there are no more corrections, don't submit or upload anything.

- Nice work! Thanks!

Team Moii Artwork Feedback (Tommy)

Original Artwork

Modified Artwork

startup
ia. Moii
of-the
re home

what to
k for in
system

within
lighting
around
Moii has
returns

and the
ng how

d where
acy and
clients
nent for

nsfer of
end and
r front-
atabase
Storage
d using
us to

startup
ia. Moii
of-the
re home

what to
k for in
system

within
lighting
around
Moii has
returns

and the
ng how

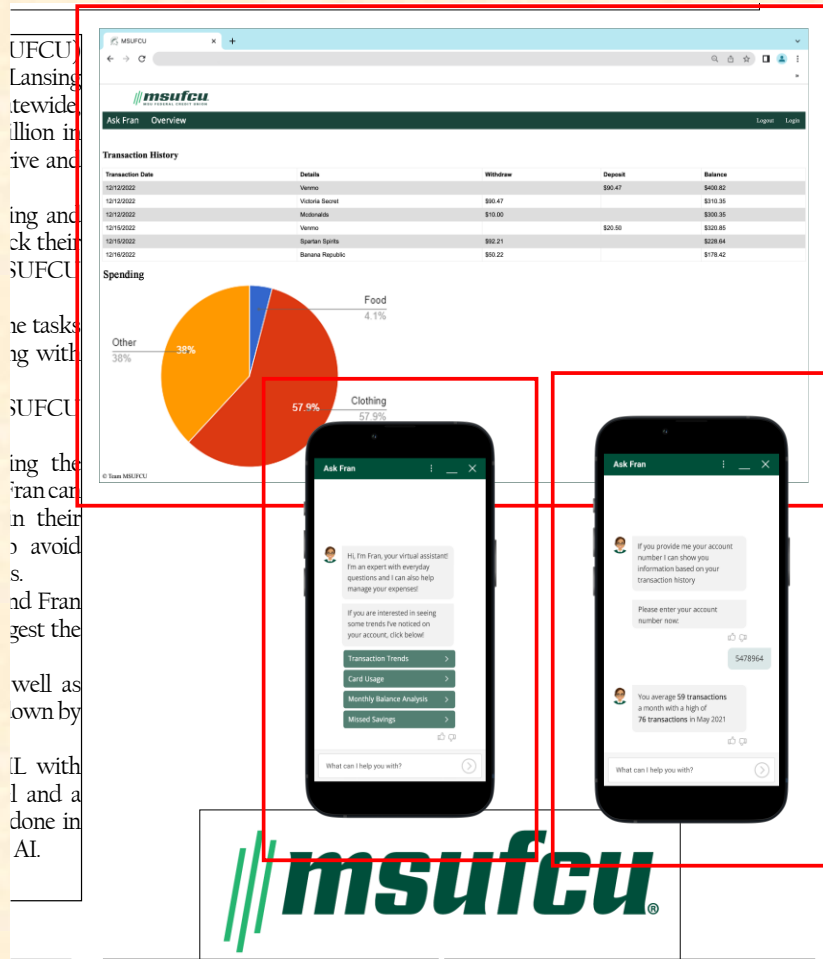
d where
acy and
clients
nent for

nsfer of
end and
r front-
atabase
Storage
d using
us to

Team MSUFCU Artwork Feedback (Tommy)

Original Artwork

Feedback



- Your artwork and layout are basically good.
- Your mobile phone artwork has too much whitespace around it. You were supposed to have used paint.net to crop out the whitespace. Read the directions. I cropped it for you. It'll cost you. If you update this artwork, make sure to crop out the whitespace as per the instructions.
- I resized and moved things slightly.
- Leave the artwork layout as it is now. Don't resize or move anything.
- I posted an updated version of your assets zip file.
- If you made any corrections in your original submission other than the project description (like to sponsor names) , check that I corrected them. If not, correct them.

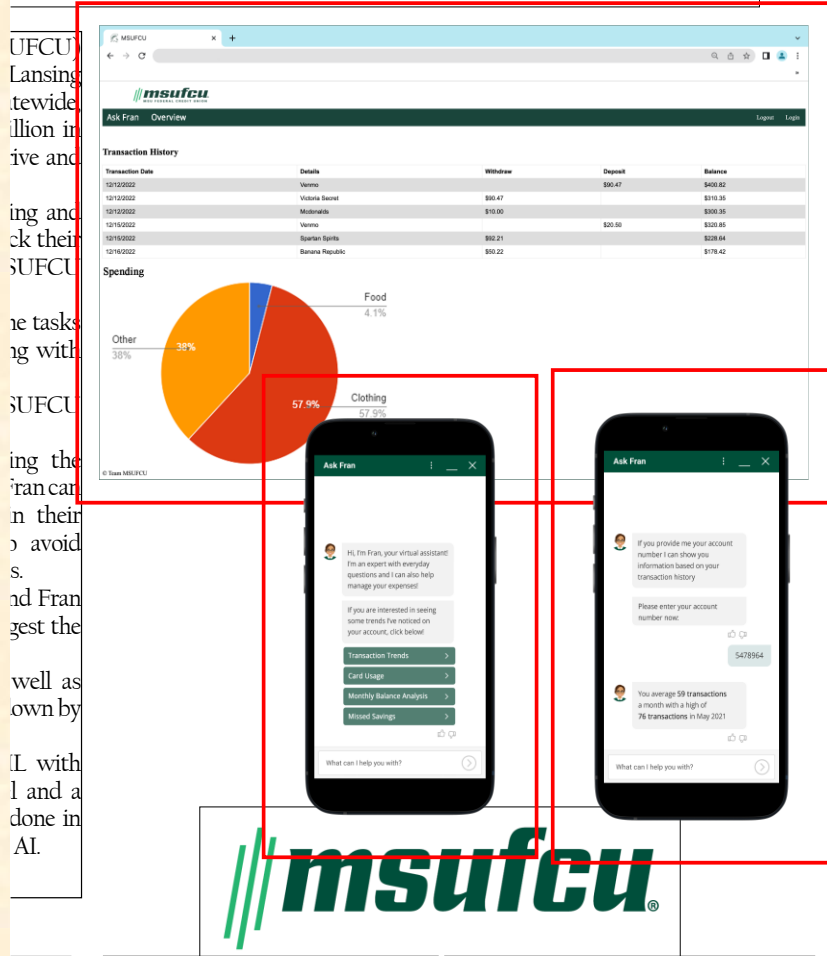
If there are more corrections other than to the project description, make and highlight them, and upload an updated assets zip file.

If there are no more corrections, don't submit or upload anything.

Team MSUFCU Artwork Feedback (Tommy)

Original Artwork

Modified Artwork



Team Roosevelt Innovations Data Science Artwork Feedback (Luke)

Original Artwork

Feedback



- Your artwork and layout are basically good.
- I resized and moved things slightly.
- Leave the artwork layout as it is now. Don't resize or move anything.
- I posted an updated version of your assets zip file.
- If you made any corrections in your original submission other than the project description (like to sponsor names) , check that I corrected them. If not, correct them.

If there are more corrections other than to the project description, make and highlight them, and upload an updated assets zip file.

If there are no more corrections, don't submit or upload anything.

- Nice work! Thanks!

Team Roosevelt Innovations Data Science Artwork Feedback (Luke)

Original Artwork

Modified Artwork

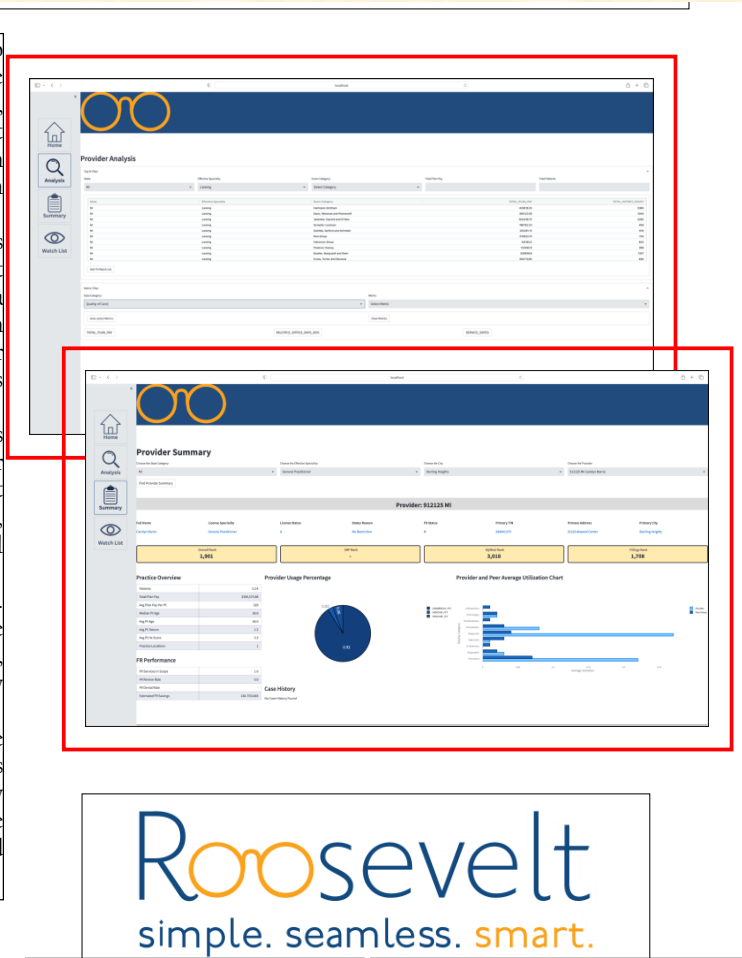
ation to
 surance
 abilities,
 treatment
 ore than
 lication

there is
 Toolkit
 ceive a
 es from
 ge their
 reports

omalies
 uses for
 so that
 simple,
 matical

on data.
 e of the
 charts,
 d easily

on of the
 stAPI is
 normally
 ing the
 s stored



Roosevelt
 simple. seamless. smart.

ation to
 surance
 abilities,
 treatment
 ore than
 lication

there is
 Toolkit
 ceive a
 es from
 ge their
 reports

omalies
 uses for
 so that
 simple,
 matical

on data.
 e of the
 charts,
 d easily

on of the
 stAPI is
 normally
 ing the
 s stored



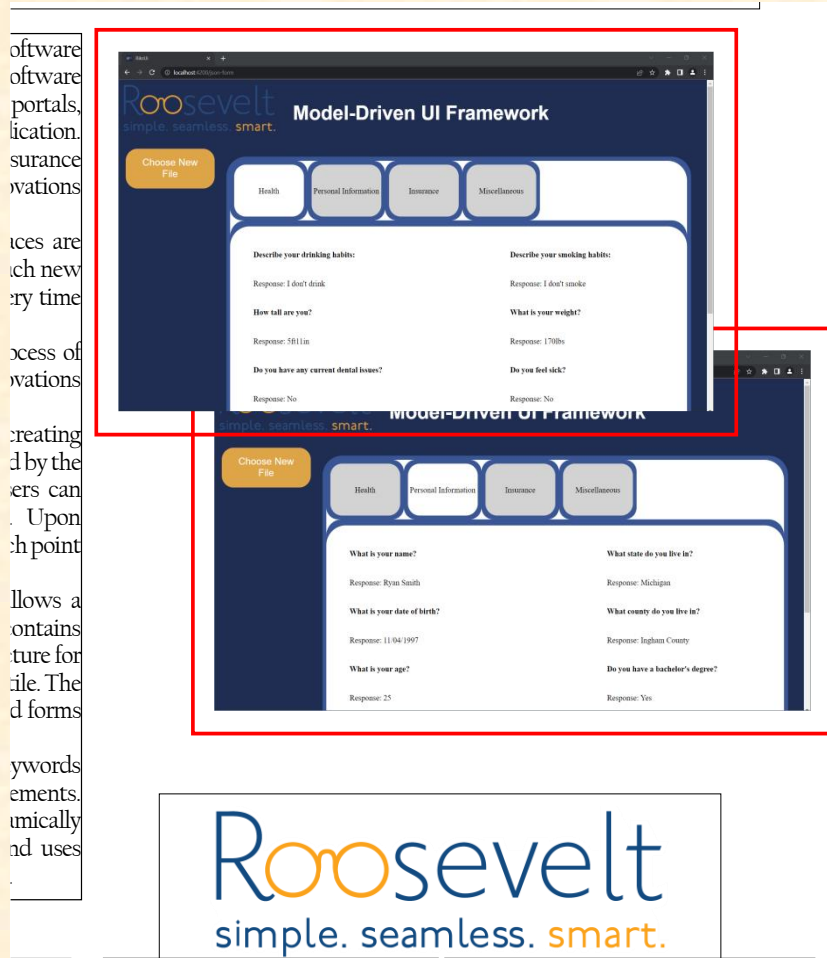
Roosevelt
 simple. seamless. smart.



Team Roosevelt Innovations Knowledge Science Artwork Feedback (Luke)

Original Artwork

Feedback



- Your artwork and layout are basically good.
- I may have moved things slightly.
- Leave the artwork layout as it is now. Don't resize or move anything.
- I posted an updated version of your assets zip file.
- If you made any corrections in your original submission other than the project description (like to sponsor names), check that I corrected them. If not, correct them.

If there are more corrections other than to the project description, make and highlight them, and upload an updated assets zip file.

If there are no more corrections, don't submit or upload anything.

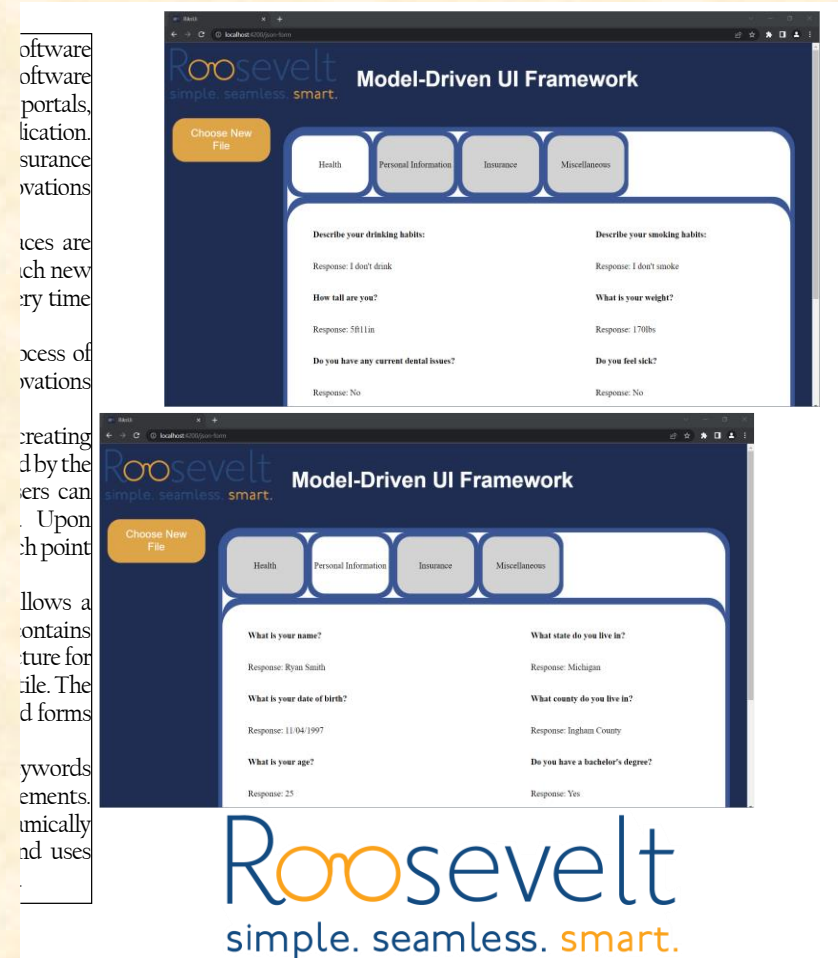
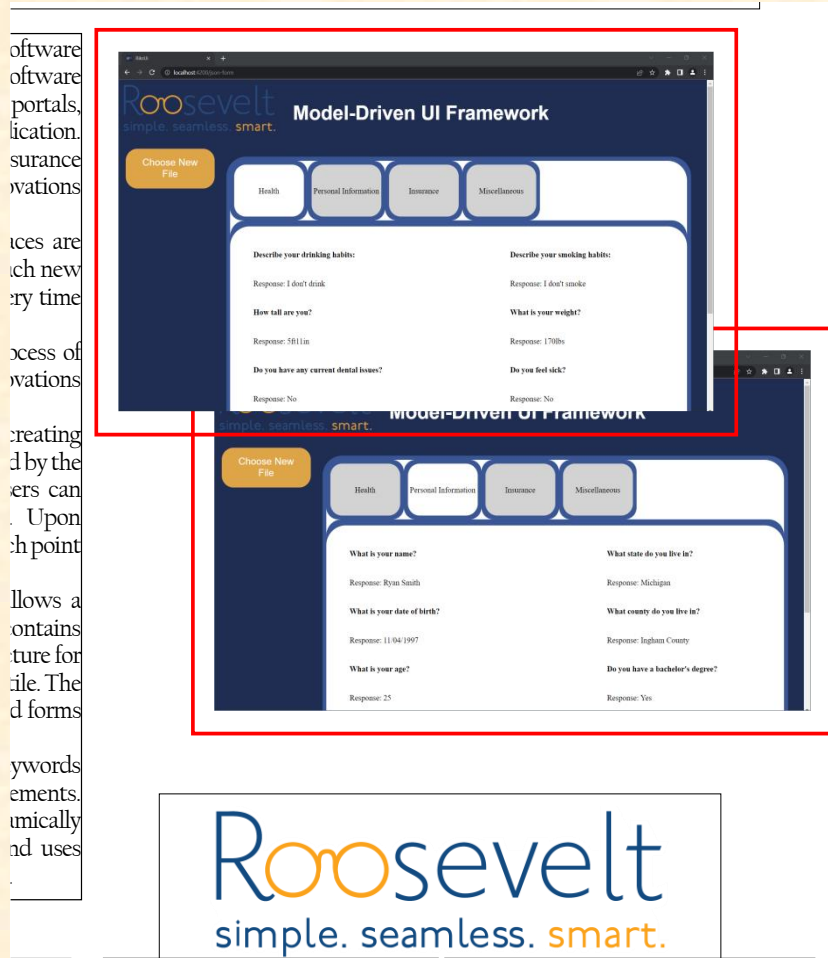
- Nice work! Thanks!



Team Roosevelt Innovations Knowledge Science Artwork Feedback (Luke)

Original Artwork

Modified Artwork



Team RPM Artwork Feedback (Tommy)

Original Artwork

Feedback

socializes
s. On a
les and
located

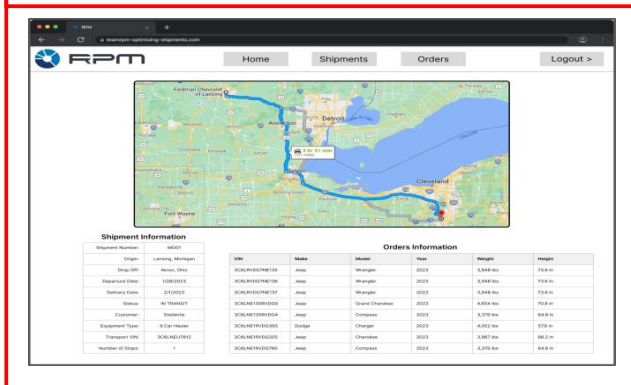
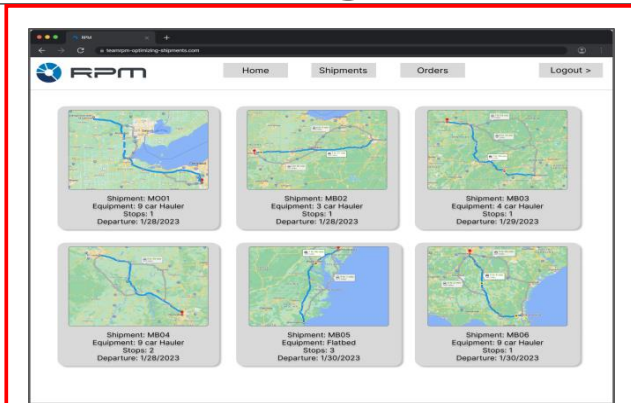
complex
ications
s using
on.

g web
drop-off
s. It also
ize the

ual data
process
, model
ers and

various
t is also
moment.

ent and
s Scikit-
optimize



RPM

- Your artwork and layout are basically good.
- I resized and moved things slightly.
- Leave the artwork layout as it is now. Don't resize or move anything.
- I posted an updated version of your assets zip file.
- If you made any corrections in your original submission other than the project description (like to sponsor names) , check that I corrected them. If not, correct them.

If there are more corrections other than to the project description, make and highlight them, and upload an updated assets zip file.

If there are no more corrections, don't submit or upload anything.

- Nice work! Thanks!



Team RPM Artwork Feedback (Tommy)

Original Artwork

Modified Artwork

socializes
s. On a
les and
located

complex
ications
s using
on.

g web
drop-off
s. It also
ize the

ual data
process
ers and

various
t is also
moment.

ent and
s Scikit-
optimize

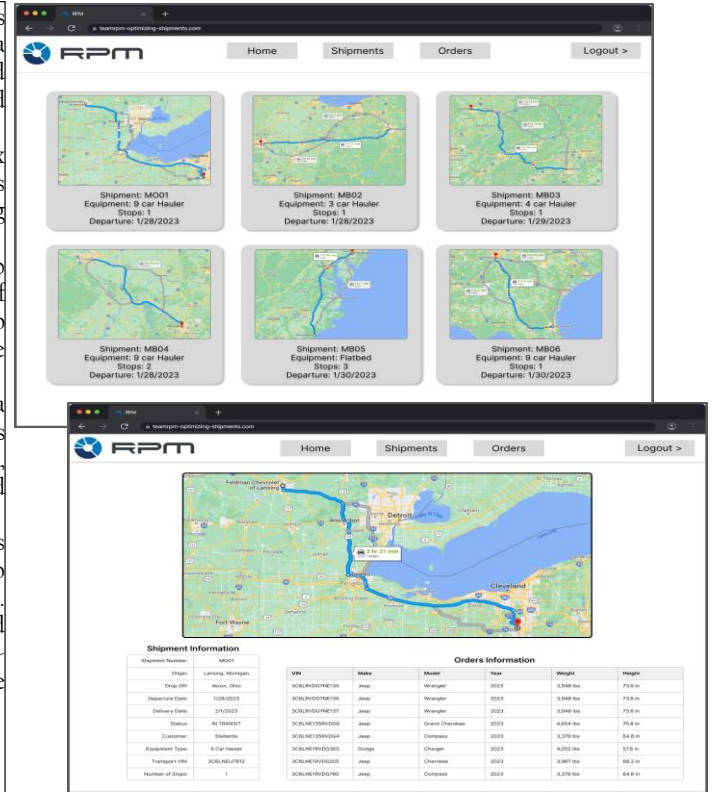
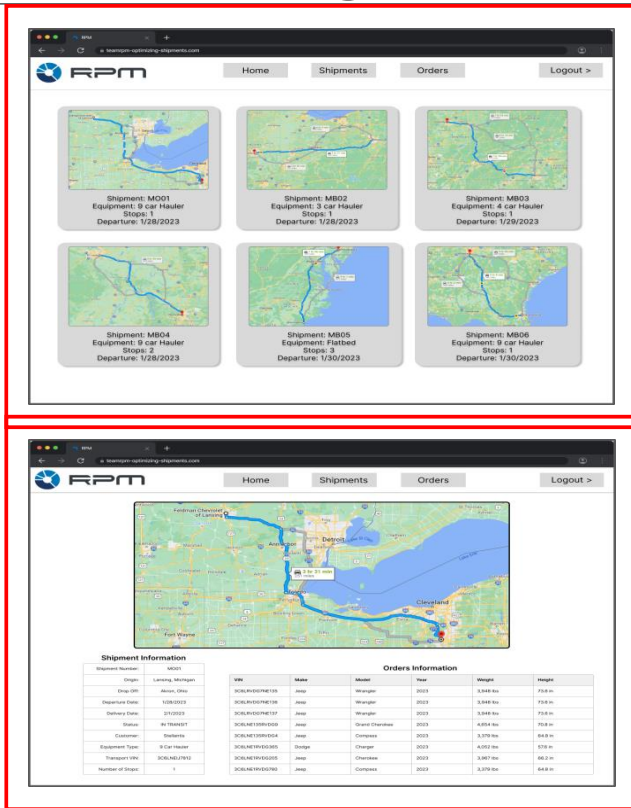
socializes
s. On a
les and
located

complex
ications
s using
on.

g web
drop-off
s. It also
ize the

ual data
process
, model
ers and

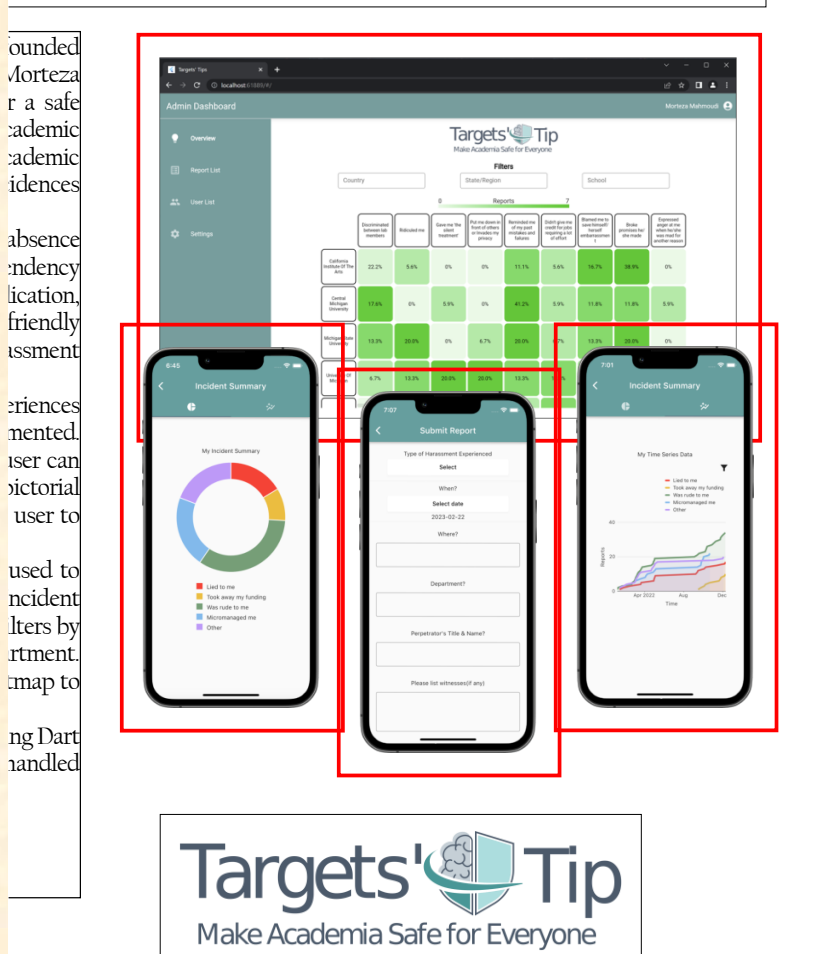
various
t is also
moment.
ent and
s Scikit-
optimize



Team Targets' Tip Artwork Feedback (Griffin)

Original Artwork

Feedback



- Your artwork and layout are basically good.
- I resized and moved things slightly.
- Leave the artwork layout as it is now. Don't resize or move anything.
- I posted an updated version of your assets zip file.
- If you made any corrections in your original submission other than the project description (like to sponsor names) , check that I corrected them. If not, correct them.

If there are more corrections other than to the project description, make and highlight them, and upload an updated assets zip file.

If there are no more corrections, don't submit or upload anything.

- Nice work! Thanks!

Team Targets' Tip Artwork Feedback (Griffin)

Original Artwork

Modified Artwork

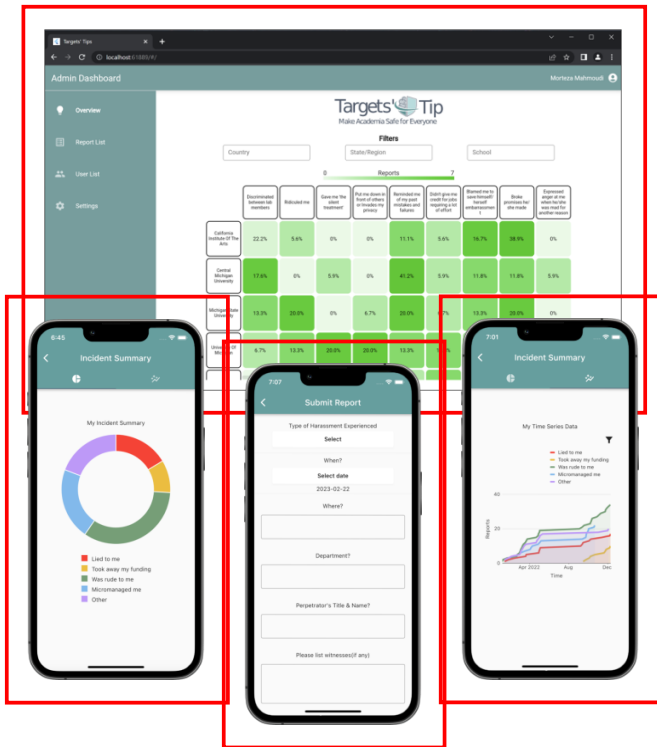
ounded
Mortezar
r a safe
academic
academic
incidences

absence
dependency
lication,
friendly
assessment

periences
mented.
user can
victorial
user to

used to
incident
lters by
rtment.
map to

ng Dart
handled



Targets' Tip
Make Academia Safe for Everyone

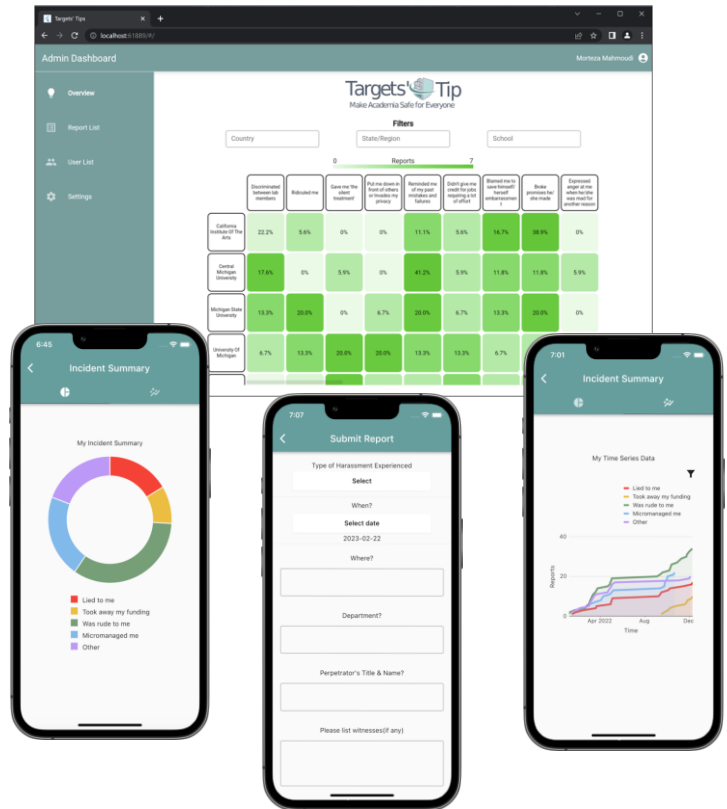
ounded
Mortezar
r a safe
academic
academic
incidences

absence
dependency
lication,
friendly
assessment

periences
mented.
user can
victorial
user to

used to
incident
lters by
rtment.
map to

ng Dart
handled



Targets' Tip
Make Academia Safe for Everyone

Team TechSmith Artwork Feedback (Griffin)

Original Artwork

Feedback

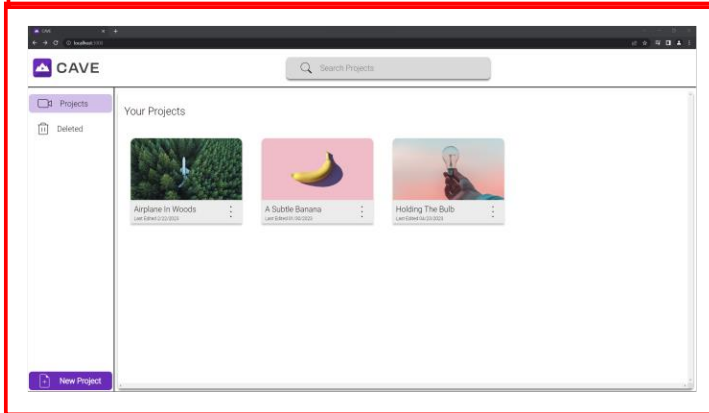
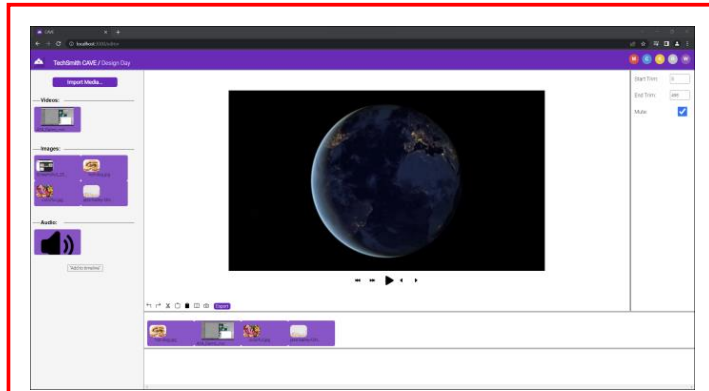
ate and
editing
are used
company.
lenging.
forts of
creative
sjointed
working

lication
users to
dio files
preview
al video
s.

ly in the
tors log
ently or

anges as
ons. By
product
flects a

mppeg
he final
in sync
s hosted



- Your artwork and layout are basically good.
- Leave the artwork layout as it is now. Don't resize or move anything.
- I posted an updated version of your assets zip file.
- If you made any corrections in your original submission other than the project description (like to sponsor names) , check that I corrected them. If not, correct them.

If there are more corrections other than to the project description, make and highlight them, and upload an updated assets zip file.

If there are no more corrections, don't submit or upload anything.

- Nice work! Thanks!



Team TechSmith Artwork Feedback (Griffin)

Original Artwork

Modified Artwork

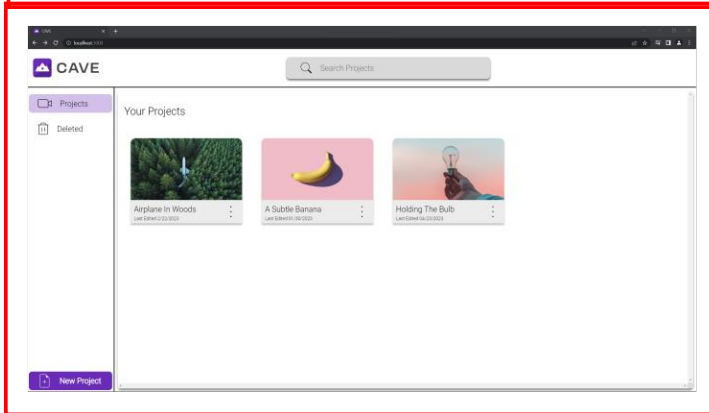
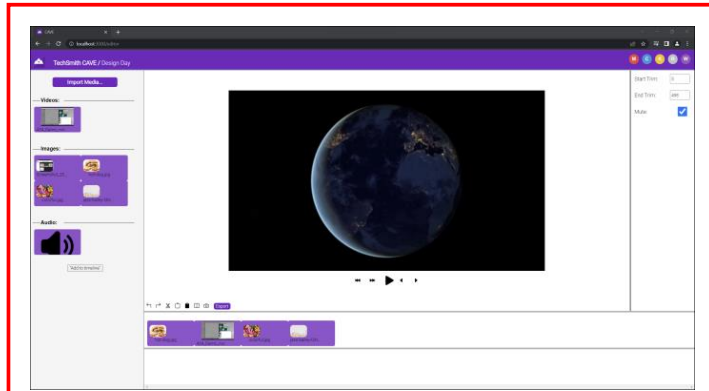
ate and editing are used by the company. The original artwork is challenging for the efforts of creative and jointed working.

lication users to dio files preview al video s.

ly in the tators log ently or

anges as ons. By product reflects a

Fmpeg he final in sync s hosted



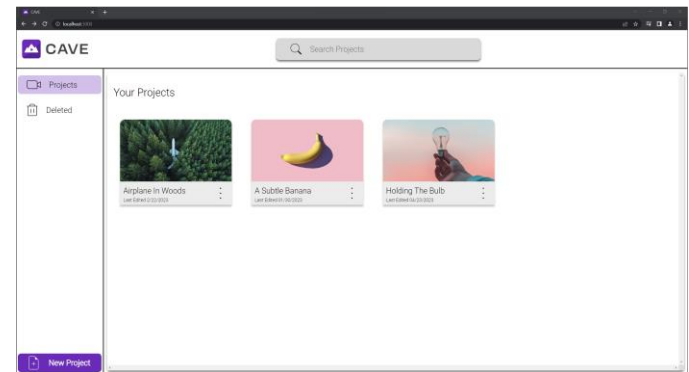
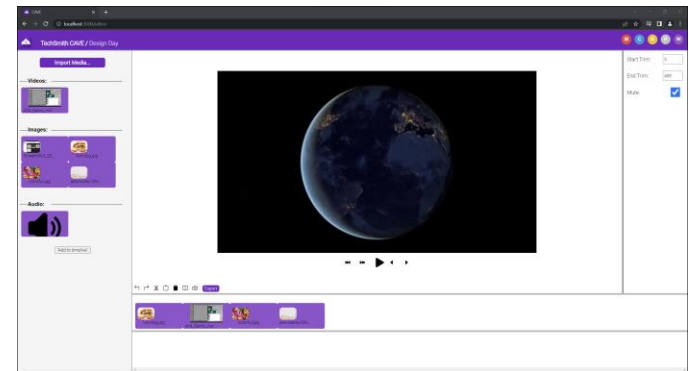
ate and editing are used by the company. The original artwork is challenging for the efforts of creative and jointed working.

lication users to dio files preview al video s.

ly in the tators log ently or

anges as ons. By product reflects a

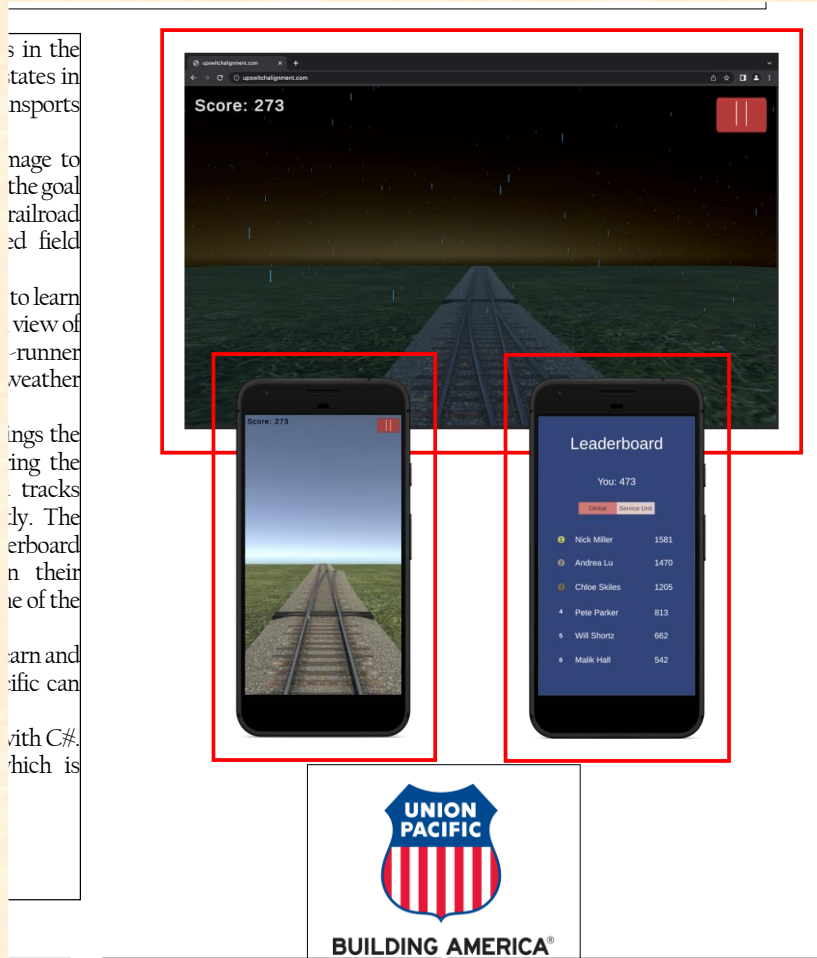
Fmpeg he final in sync s hosted



Team Union Pacific Artwork Feedback (Luke)

Original Artwork

Feedback



- Your artwork and layout are basically good.
- Is the upper artwork a night scene or bad weather scene? It's a bit dark. Think about replacing it with a lighter image.
- I resized and moved things slightly.
- Leave the artwork layout as it is now. Don't resize or move anything.
- I posted an updated version of your assets zip file.
- If you made any corrections in your original submission other than the project description (like to sponsor names), check that I corrected them. If not, correct them.

If there are more corrections other than to the project description, make and highlight them, and upload an updated assets zip file.

If there are no more corrections, don't submit or upload anything.

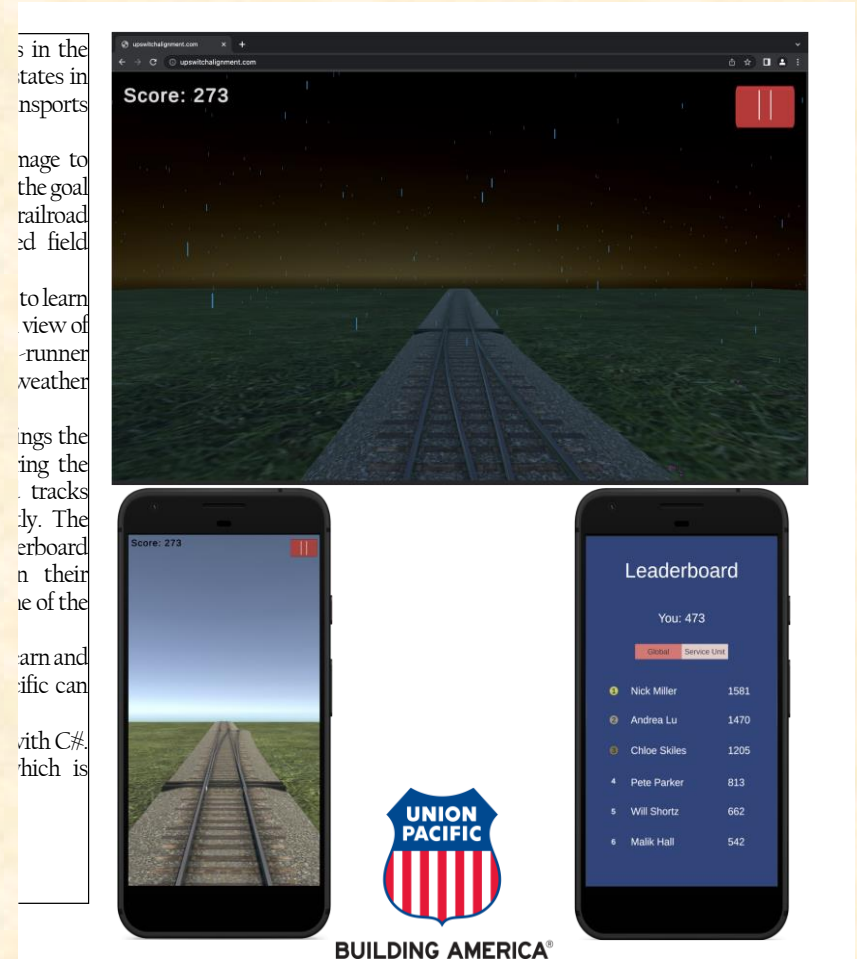
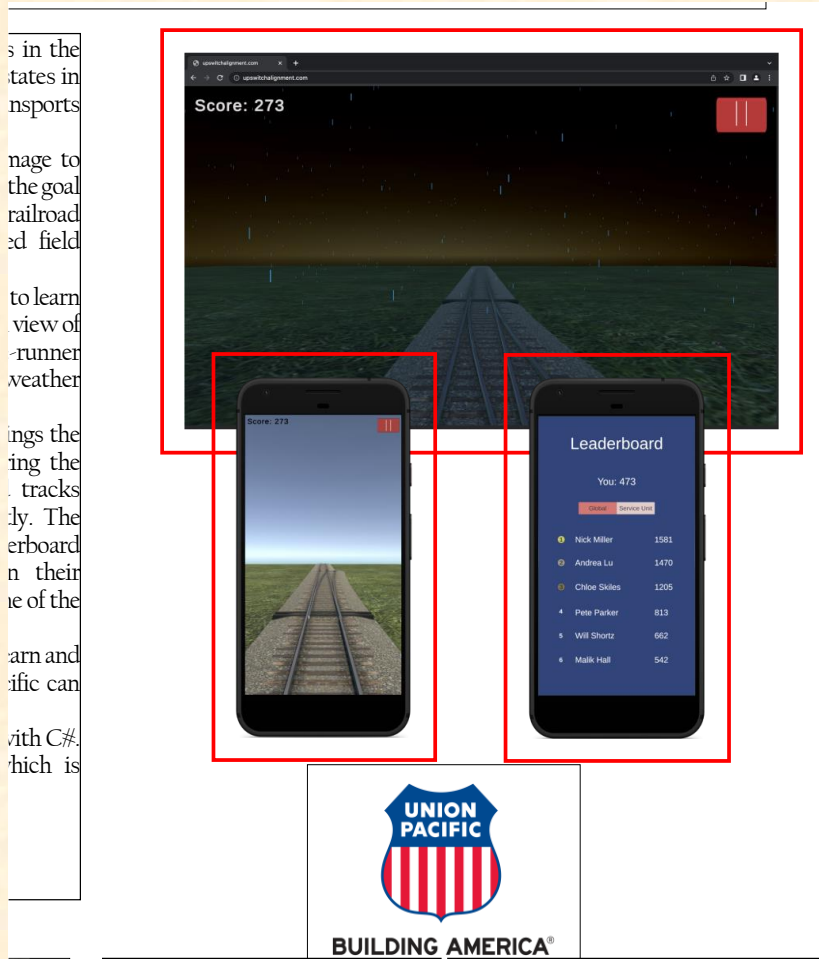
- Nice work! Thanks!



Team Union Pacific Artwork Feedback (Luke)

Original Artwork

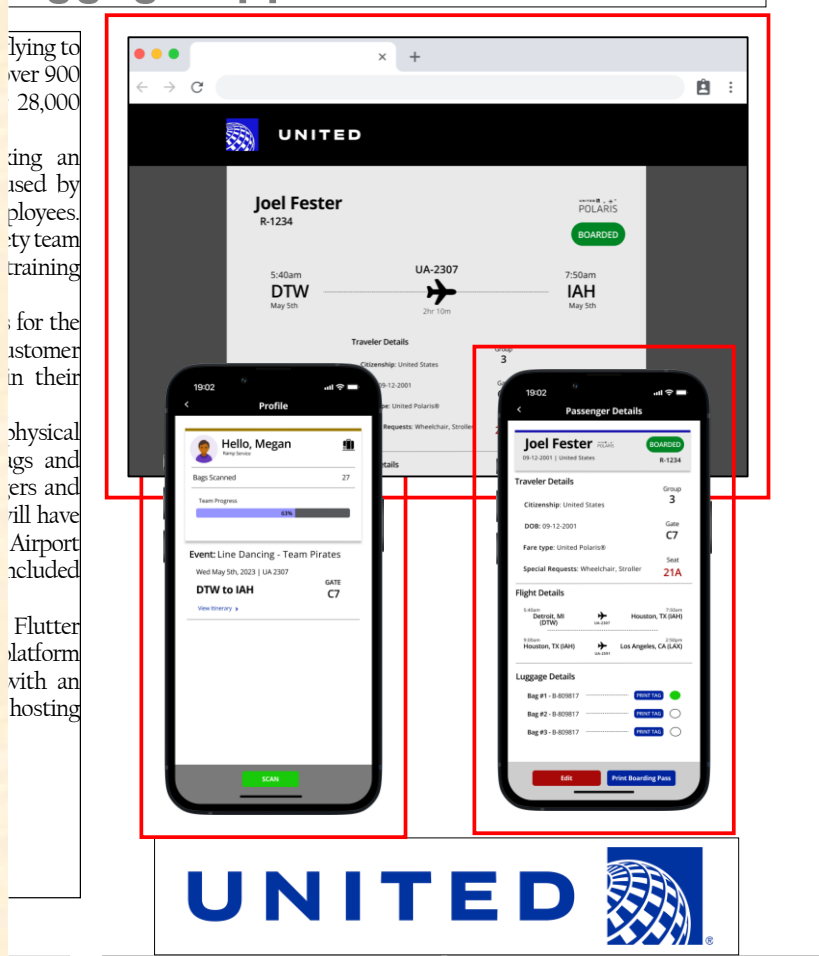
Modified Artwork



Team United Airlines Airport Operations Artwork Feedback (Griffin)

Original Artwork

Feedback



- Your artwork and layout are basically good.
- Your mobile phone artwork has too much whitespace around it. You were supposed to have used paint.net to crop out the whitespace. Read the directions. I cropped it for you. It'll cost you. If you update this artwork, make sure to crop out the whitespace as per the instructions.
- Your artwork is numbered incorrectly. It is supposed to be numbered top to bottom, left to right. I fixed it.
- I resized and moved things slightly.
- Leave the artwork layout as it is now. Don't resize or move anything.
- I posted an updated version of your assets zip file.
- If you made any corrections in your original submission other than the project description (like to sponsor names), check that I corrected them. If not, correct them.

If there are more corrections other than to the project description, make and highlight them, and upload an updated assets zip file.

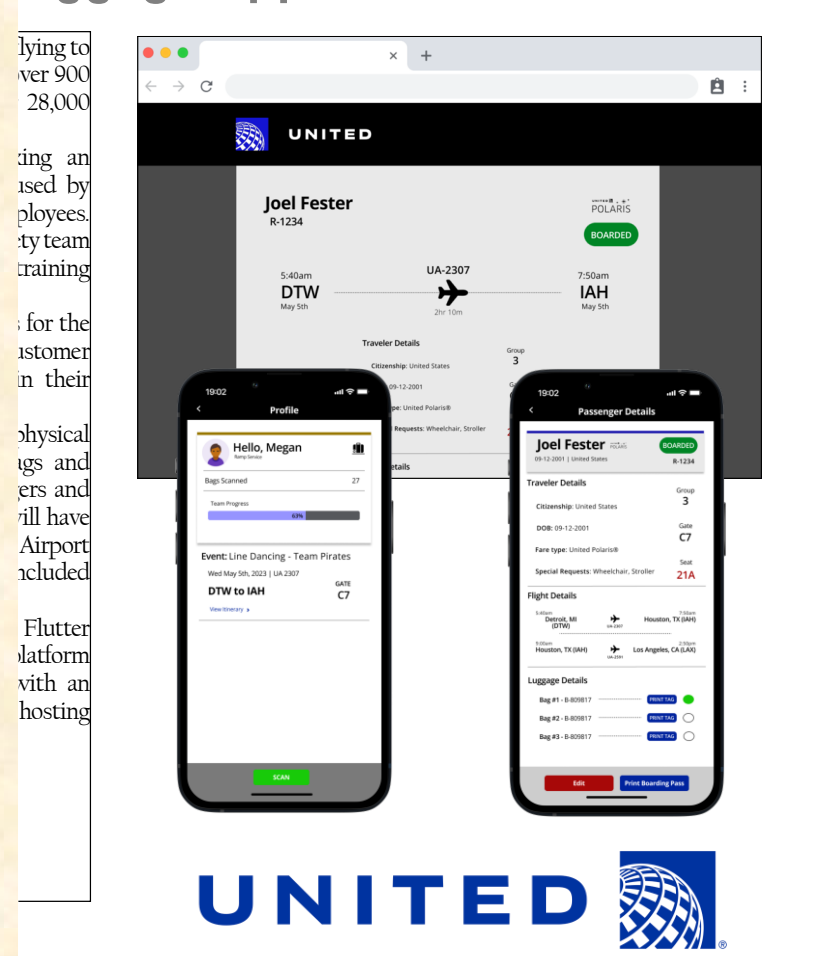
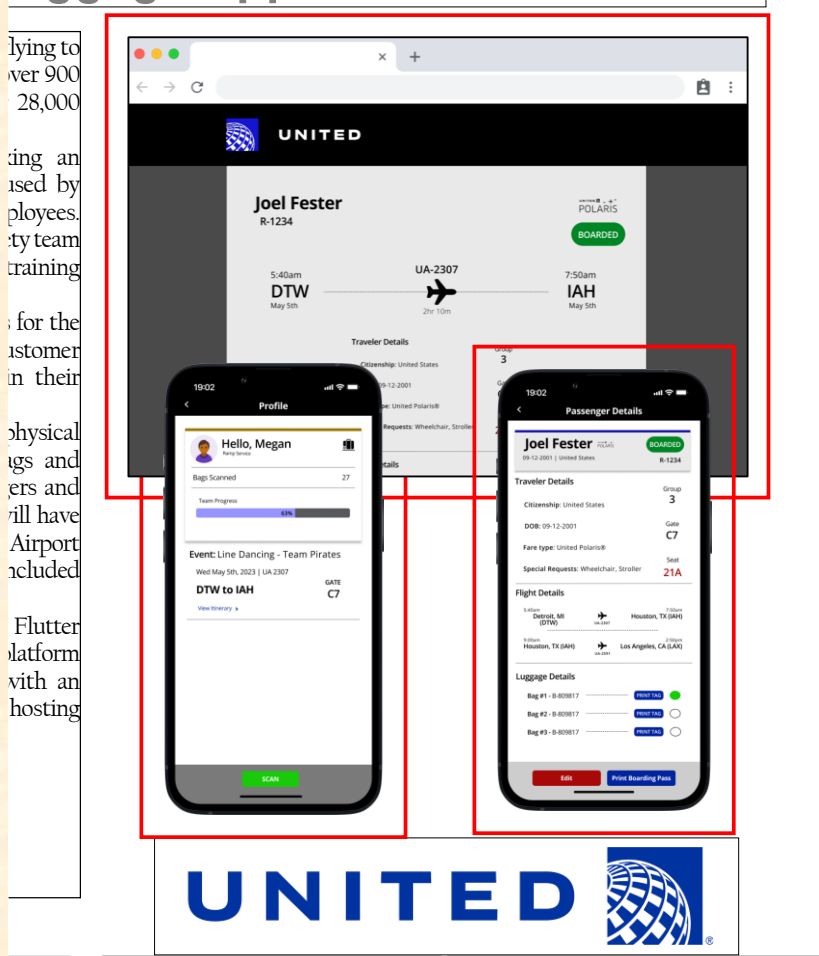
If there are no more corrections, don't submit or upload anything.



Team United Airlines Airport Operations Artwork Feedback (Griffin)

Original Artwork

Modified Artwork



Team United Airlines Quality Assurance Artwork Feedback (Griffin)

Original Artwork

Feedback

Chicago,
being the
U.S. and
equity, it

stantly
s a very
so that
ed size
tion. As
r better
neck to

ocused
in solve
to scan
e issues
o assist
web app,
stomers
on the
edback
data in

image
Neural
Python,
It using
atabase
d to the

Flight Number	Origin	Destination	Status	Category	Flight Date
UA536	DFW	ORD	good	try	Mon Oct 13 2014 12:00:00 GMT-0400 (Eastern Daylight Time)
UA200	LAX	SFO	good	test	Fri Oct 10 2014 11:03:00 GMT-0400 (Eastern Daylight Time)
UA455	PHO	Unknown	good	light	Sun Oct 05 2014 14:38:00 GMT-0400 (Eastern Daylight Time)
UA206	Unknown	Unknown	bad	try	Thu Oct 02 2014 09:29:00 GMT-0400 (Eastern Daylight Time)

Click to select file

Account Number

Depart

Arrive



- Your artwork has too much whitespace in it. You don't have anything more interesting with less whitespace? Replace it with something with less whitespace.
- Your artwork and layout are basically good.
- I may have resized and moved things slightly.
- Leave the artwork layout as it is now. Don't resize or move anything.
- I posted an updated version of your assets zip file.
- If you made any corrections in your original submission other than the project description (like to sponsor names), check that I corrected them. If not, correct them.



Team United Airlines Quality Assurance Artwork Feedback (Griffin)

Original Artwork

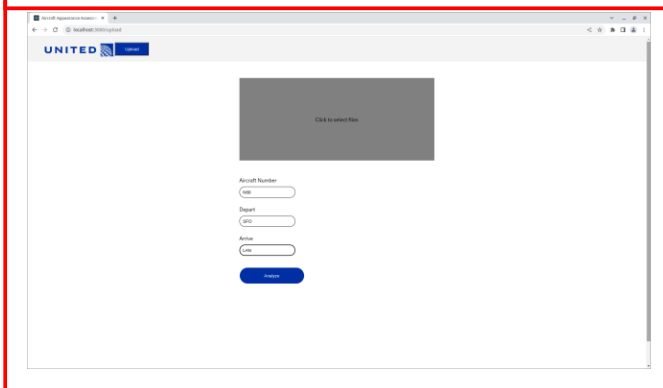
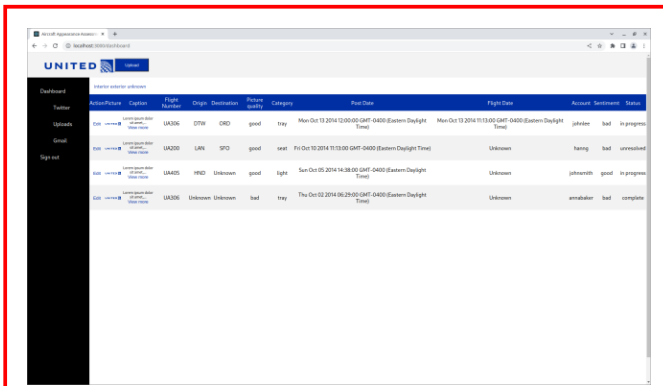
Modified Artwork

Chicago, being the U.S. and equity, it

stantly as a very so that ed size tion. As r better neck to

ocused in solve to scan e issues o assist web app, stomers on the eedback data in

image Neural Python, It using atabase d to the

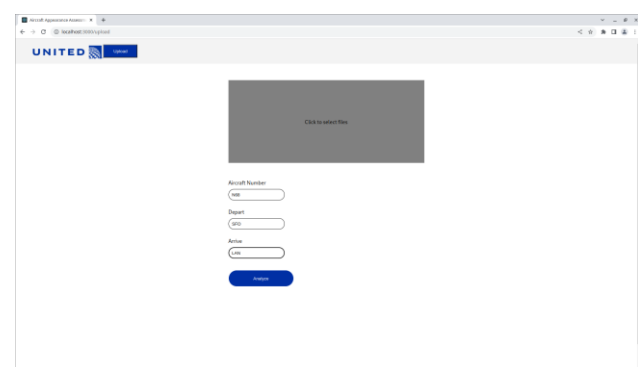
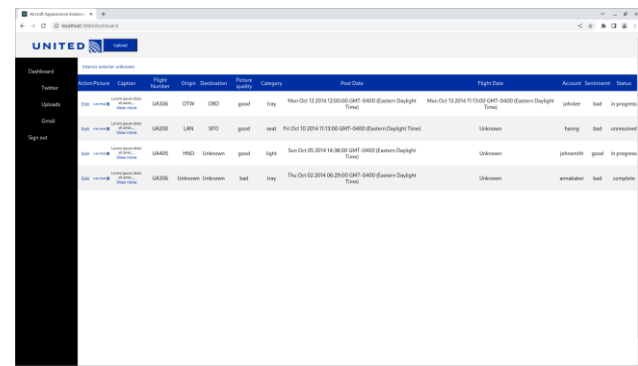


Chicago, being the U.S. and equity, it

stantly as a very so that ed size tion. As r better neck to

ocused in solve to scan e issues o assist web app, stomers on the eedback data in

image Neural Python, It using atabase d to the



Team United Airlines Training Artwork Feedback (Luke)

Original Artwork

Feedback

- Your artwork and layout are basically good, but...
- One of your artwork textboxes was not named correctly. I fixed it.
- The resolution of your artwork is way too low. Replace both with high resolution versions.
- Leave the artwork layout as it is now. Don't resize or move anything.
- If you made any corrections in your original submission other than the project description (like to sponsor names), check that I corrected them. If not, correct them.
- I posted an updated version of your assets zip file.



UNITED



Team United Airlines Training Artwork Feedback (Luke)

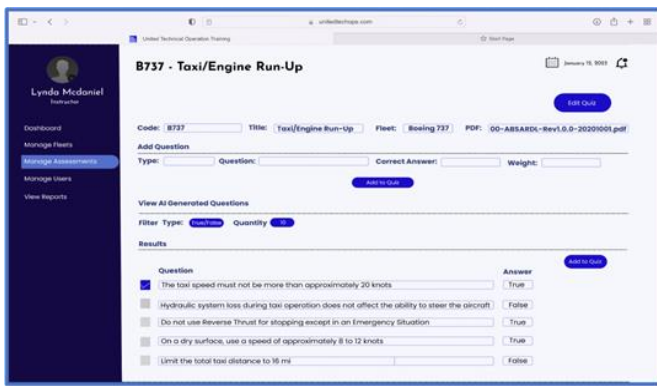
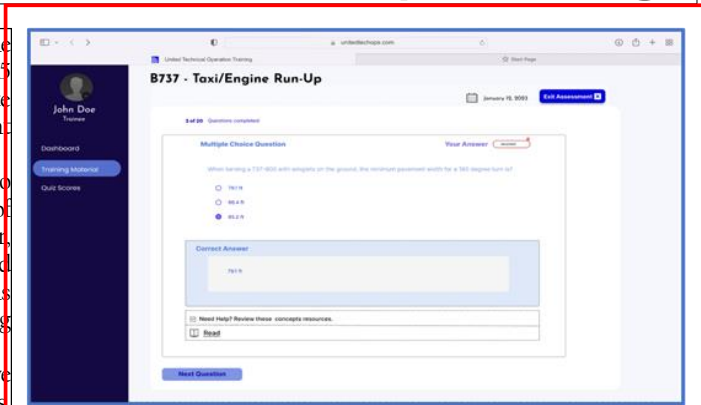
Original Artwork

Modified Artwork

es is one
over 875
operate
differen

ritical to
eries of
owever,
ng and
micians
t strong

orative
g topics.
m offers
erience.
aterials,
tenance
nts can
ructors
, which
atically
course
process,
sments
dividual
up.
ion and
machine



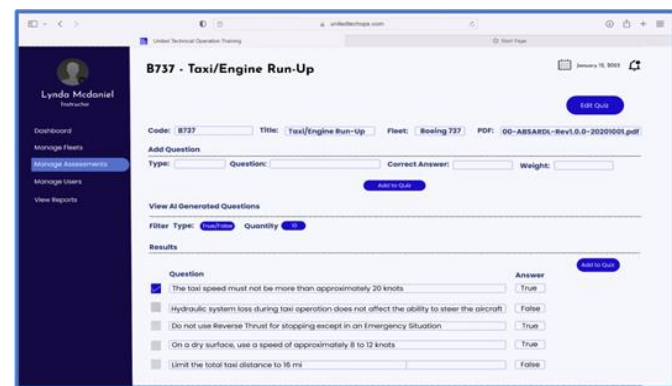
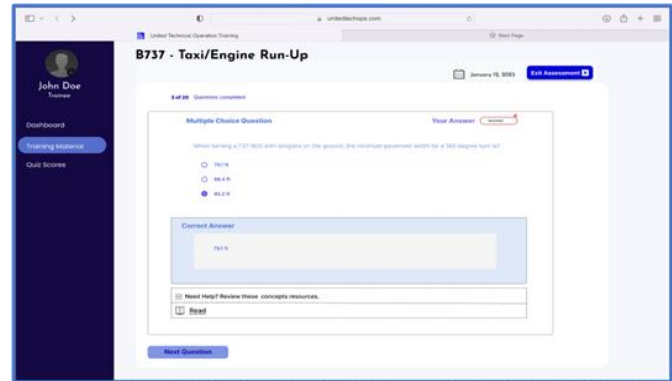
UNITED



es is one
over 875
operate
differen

ritical to
eries of
owever,
ng and
micians
t strong

orative
g topics.
m offers
erience.
aterials,
tenance
nts can
ructors
, which
atically
course
process,
sments
dividual
up.
ion and
machine



UNITED



Team Urban Science Artwork Feedback (Griffin)

Original Artwork

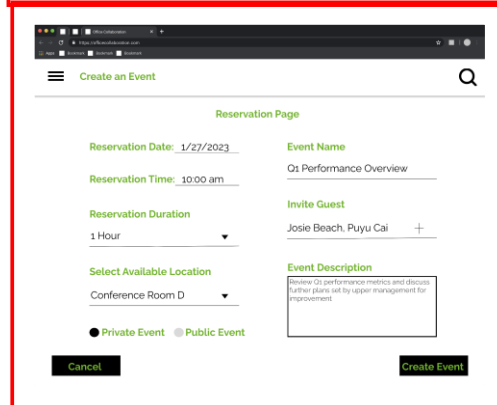
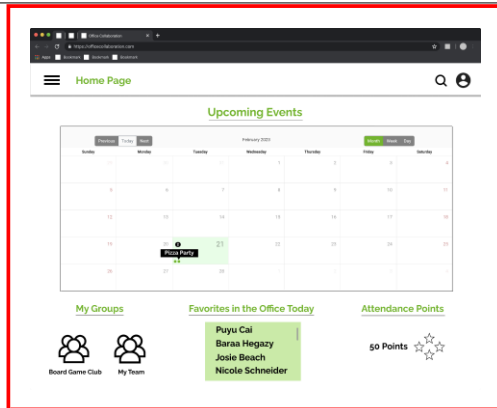
Feedback

n, is a
merous
he most
tability

ne office
e can be
e work-
cline in
a study
s would
socialize
embers.
rkers in
venient
eBuddy
thin the

nd track
e. Users
official
seating
eetings,
o create
n entire
sers are
oyees to

Angular
et Core



URBAN SCIENCE™

- Your artwork and layout are basically good, but...
- Your artwork blends into the white background. You were supposed to have added a border using PowerPoint. Read the directions. I added borders for you. It'll cost you. If you update this artwork, make sure add borders per the instructions.
- I resized and moved things slightly.
- Leave the artwork layout as it is now. Don't resize or move anything.
- I posted an updated version of your assets zip file.
- If you made any corrections in your original submission other than the project description (like to sponsor names), check that I corrected them. If not, correct them.

If there are more corrections other than to the project description, make and highlight them, and upload an updated assets zip file.

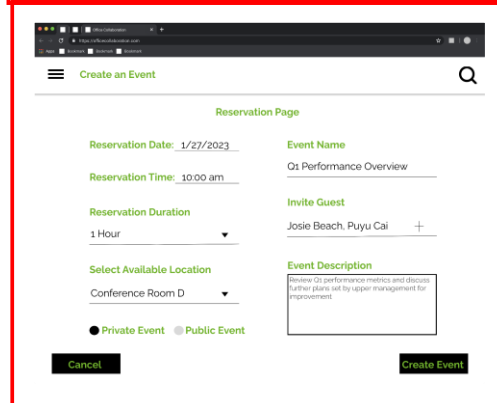
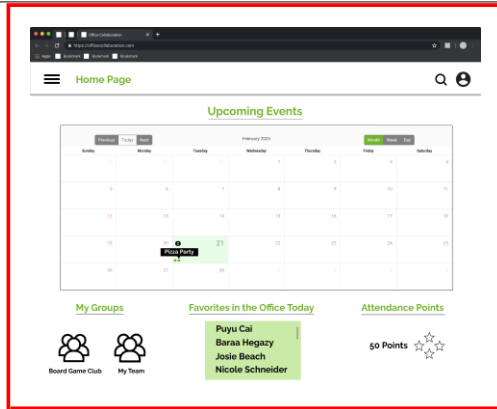
If there are no more corrections, don't submit or upload anything.



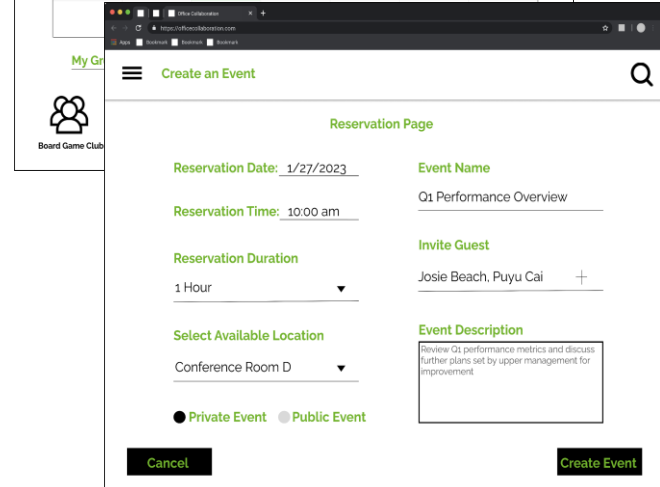
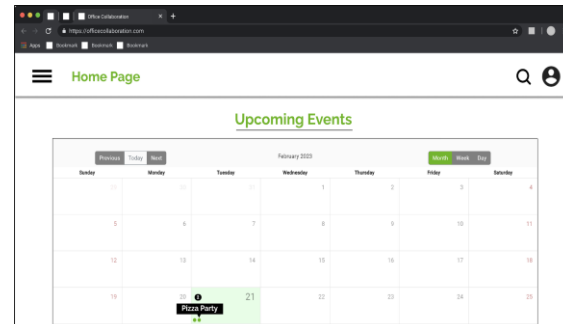
Team Urban Science Artwork Feedback (Griffin)

Original Artwork

Modified Artwork



URBAN SCIENCE.



URBAN SCIENCE.



Team Vectorform Artwork Feedback (Luke)

Original Artwork

Feedback



- Your artwork and layout are basically good.
- Leave the artwork layout as it is now. Don't resize or move anything.
- I posted an updated version of your assets zip file.
- If you made any corrections in your original submission other than the project description (like to sponsor names) , check that I corrected them. If not, correct them.

If there are more corrections other than to the project description, make and highlight them, and upload an updated assets zip file.

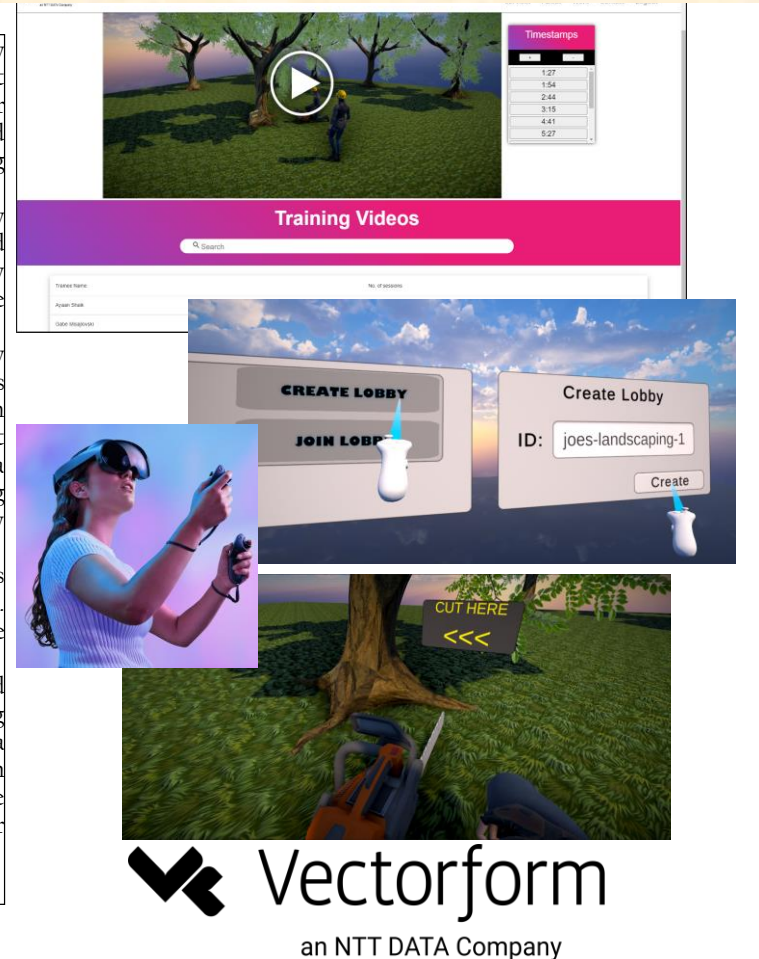
If there are no more corrections, don't submit or upload anything.

- Nice work! Thanks!

Team Vectorform Artwork Feedback (Luke)

Original Artwork

Modified Artwork



Team Vectra Artwork Feedback (Luke)

Original Artwork

Feedback



- Your artwork and layout are basically good.
- I may have resized and moved things slightly.
- Leave the artwork layout as it is now. Don't resize or move anything.
- I posted an updated version of your assets zip file.
- If you made any corrections in your original submission other than the project description (like to sponsor names) , check that I corrected them. If not, correct them.

If there are more corrections other than to the project description, make and highlight them, and upload an updated assets zip file.

If there are no more corrections, don't submit or upload anything.

- Nice work! Thanks!



Team Vectra Artwork Feedback (Luke)

Original Artwork

Modified Artwork

artificially
capable of
y tools.
standard of

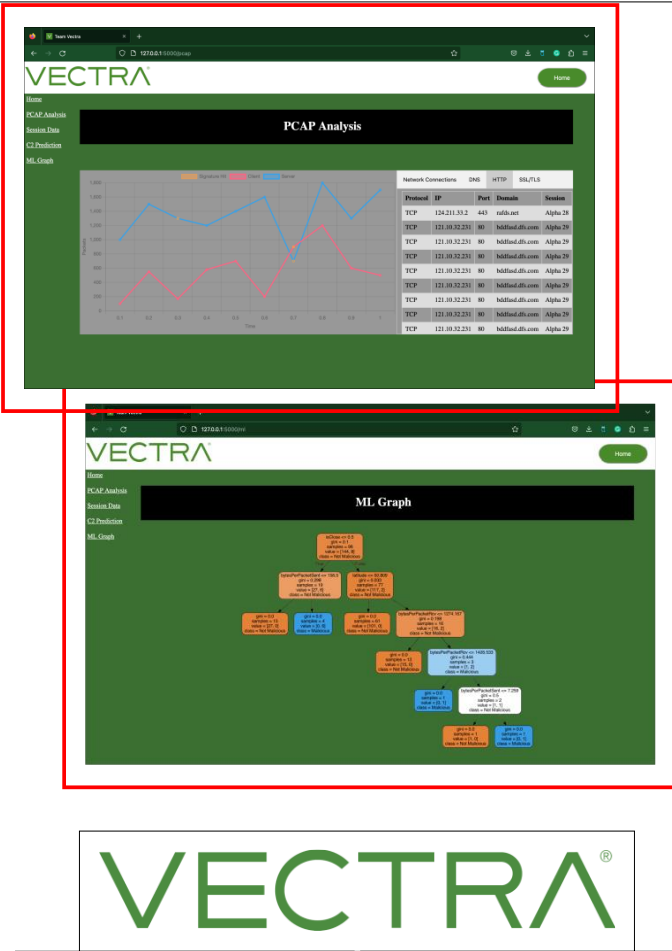
re list of
nature-
n attack
y fail to

Control
intrusion
tection,
ngths of

o detect
ol is a
with an
ommon
nd and
system

nding of
nature-
detects
ared are

y Torch,
e-based
SQLite



artificially
capable of
y tools.
standard of

re list of
nature-
n attack
y fail to

Control
intrusion
tection,
ngths of

o detect
ol is a
with an
ommon
nd and
system

nding of
nature-
detects
ared are

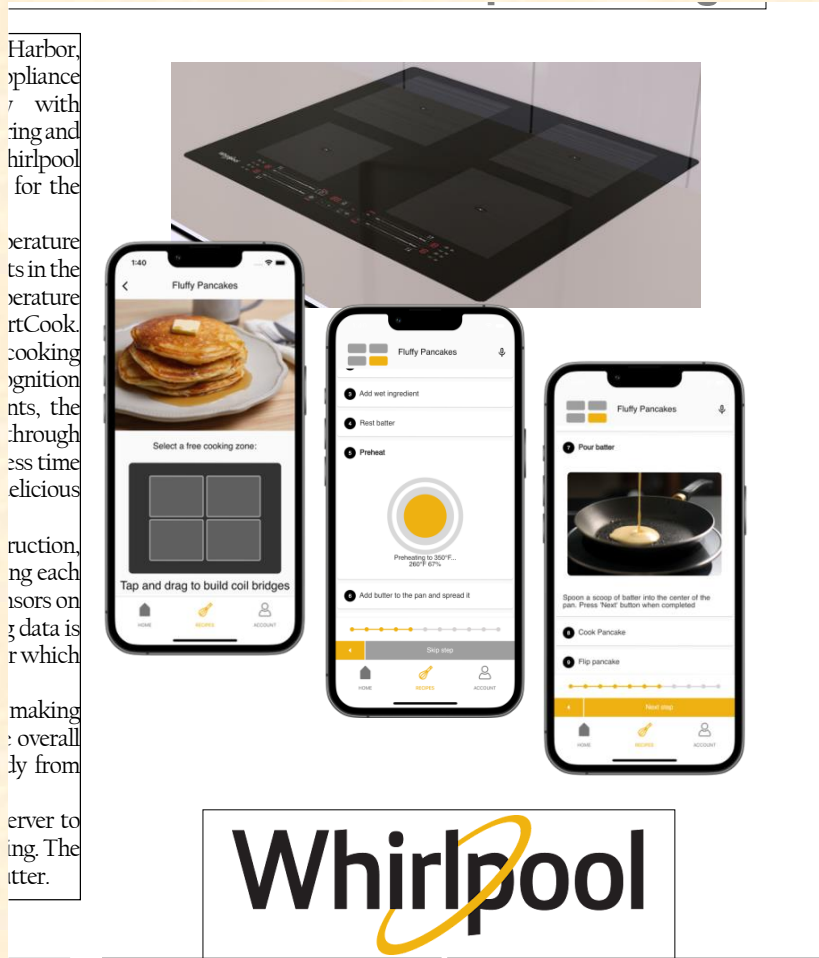
y Torch,
e-based
SQLite



Team Whirlpool Artwork Feedback (Tommy)

Original Artwork

Feedback



- We had agreed that you replace your top artwork by something that looked like a cooktop. I found something for you and replaced. It'll cost you.
 - The resolution of your artwork png images is too low. Recapture the images in much higher resolution.
 - I resized and moved things slightly.
 - Leave the artwork layout as it is now. Don't resize or move anything.
 - If you made any corrections in your original submission other than the project description (like to sponsor names) , check that I corrected them. If not, correct them.
- I posted an updated version of your assets zip file.

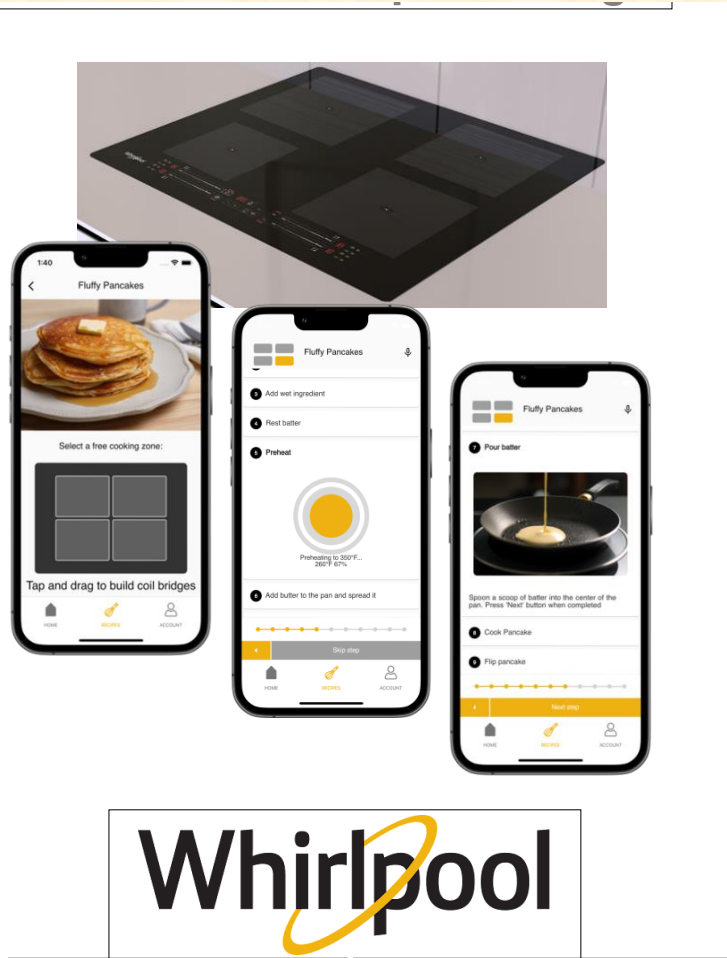


Team Whirlpool Artwork Feedback (Tommy)

Original Artwork

Modified Artwork

Harbor, appliance with ring and whirlpool for the temperature in the temperature Cook. cooking ignition, the through time delicious ruaction, ng each sors on g data is r which making e overall ly from erver to ing. The tter.



Harbor, appliance with ring and whirlpool for the temperature in the temperature Cook. cooking ignition, the through time delicious ruaction, ng each sors on g data is r which making e overall ly from erver to ing. The tter.

