

MICHIGAN STATE

U N I V E R S I T Y

10/11: Design Day Booklet Team Project Page Artwork Feedback

The Capstone Experience

Dr. Wayne Dyksen
Department of Computer Science and Engineering
Michigan State University
Fall 2022



*From Students...
...to Professionals*

What do you need to do?

[1 of 1]

- An updated version of your Design Day booklet team page zipped folder with the artwork layout modifications is posted on our Downloads page. Get it. Unzip it.
- A PDF of this slide deck is posted on our Downloads page. Get it.
- Use the Design Day booklet team page Word template in this folder.
- Read the comments below about your team’s artwork.
- Leave the artwork layout basically as is.
- Redo your artwork if and as requested.
- If necessary...
 - ...provide new high-resolution png originals appropriately numbered and named
 - ...change pictures in your template to reflect any new artwork. Do so by right-clicking on the artwork and selecting “Change Picture > From a File...” to preserve the size and location.
- If necessary, place your new artwork in your project page team and in your team assets folder.
- If necessary, update your Word template and artwork files.
- Zip up your template assets folder using Windows zip.
- Upload your zipped assets folder to DD Booklet Zip Files Artwork Updates By Team 2 in our Microsoft Teams General Channel file space and your team’s private file space by 11:59 p.m., Tuesday, October 11.



Team Ally Artwork Feedback (Luke)

Original Artwork

Feedback

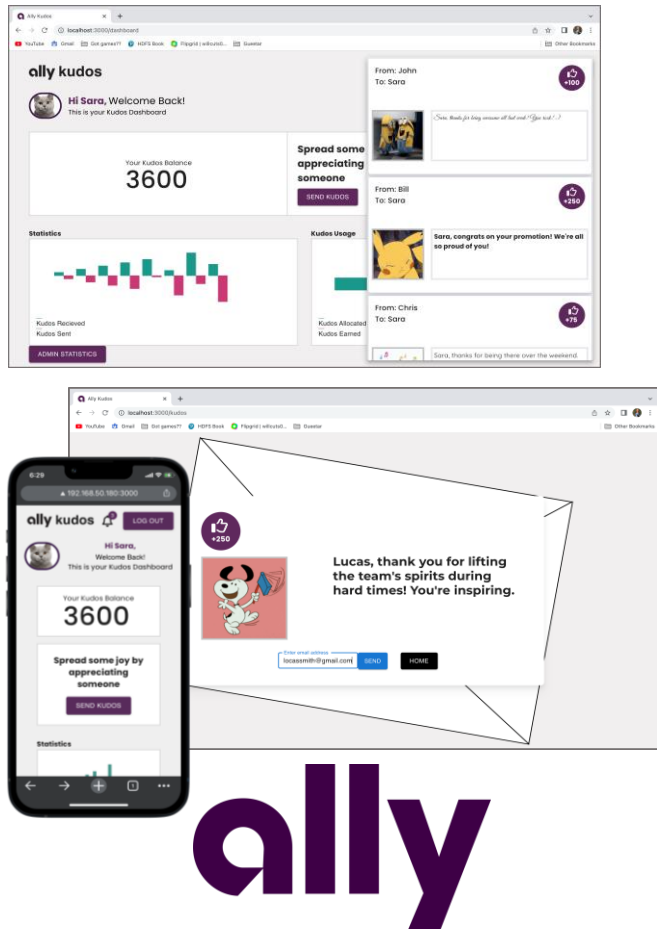
digital
holding
ucts for
lients in
periences

culture.
e people
lly puts
tinue to
ment.
s as an
orkers.
ompany
ces the

ms and
w their

ver time
wards.
phrases
os to the
a more
s for the

and is
web-app
ackages
abilities



- Your artwork is low resolution. See the email I sent out and download the PowerPoint slide deck. Redo your artwork at a much higher resolution.
- Your artwork and layout are basically good.
- I may have resized and moved things slightly.
- Leave the artwork layout as it is in the updated zipped folder that I posted.



Team Ally Artwork Feedback (Luke)

Original Artwork

Modified Artwork

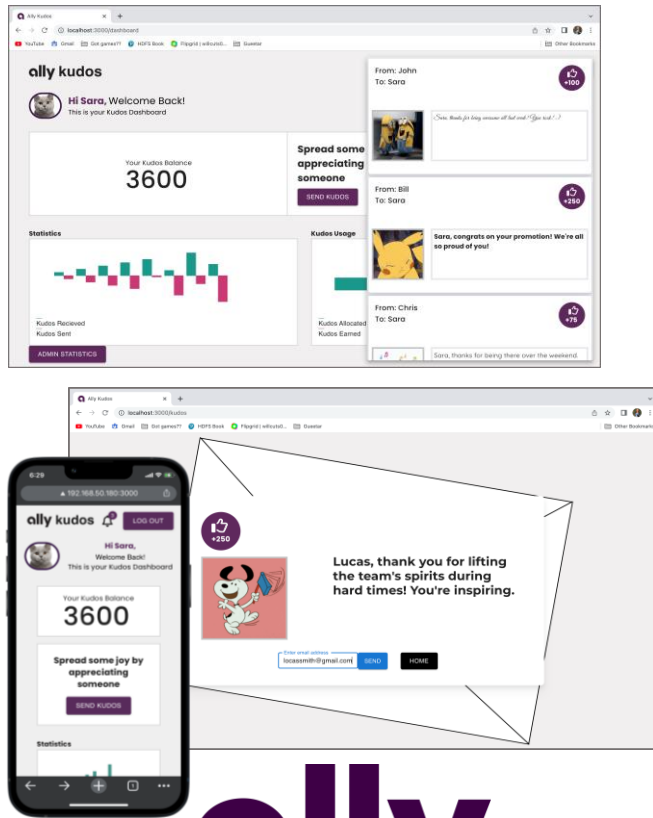
digital
holding
ucts for
lients in
periences

culture.
e people
lly puts
tinue to
ment.
s as an
workers.
company
ces the

ons and
w their

er time
wards.
phrases
s to the
a more
s for the

and is
web-app
ackages
abilities



ally

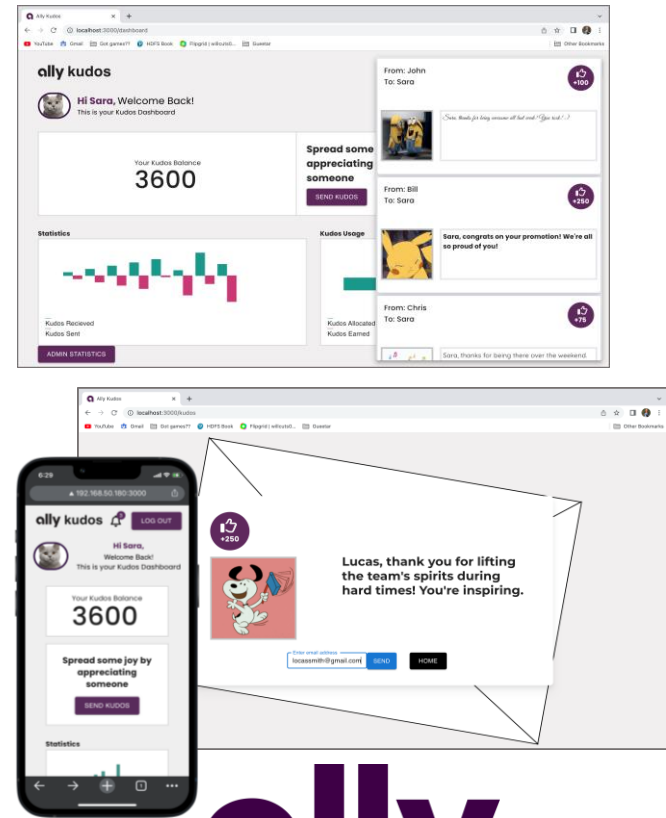
digital
holding
ucts for
lients in
periences

culture.
e people
lly puts
tinue to
ment.
s as an
workers.
company
ces the

ons and
w their

er time
wards.
phrases
s to the
a more
s for the

and is
web-app
ackages
abilities



ally



Team Amazon Artwork Feedback (Griffin)

Original Artwork

Feedback

med for
amazon
ks but
ories.
ession,
ate an
re best
stantly
s when
tomers
re that
worthy
zon has
can get

rowing
fidence
lysis to
rowser
ew and
filtering
ipped
uitive
reduces

n Web
network
server-
oDB to
aker is

The screenshot shows the Amazon product page for the Under Armour Men's Charged Assert 9 Running Shoe. It displays the original product image, the original review data (4.4 out of 5 stars, 26,124 ratings), and the adjusted review data (4.6 out of 5 stars, 26,124 original ratings, 407 removed). The adjusted review data is presented in a more prominent, larger font and includes a bar chart showing the distribution of star ratings. The page also features a 'Trusted Customer Reviews' section with a review snippet and a 'Featured Items' section at the bottom.

Star Rating	Percentage
5 Star	76%
4 Star	14%
3 Star	4%
2 Star	2%
1 Star	3%



- Your artwork is low resolution. See the email I sent out and download the PowerPoint slide deck. Redo your artwork at a much higher resolution.
- Your artwork and layout are basically good.
- I may have resized and moved things slightly.
- Leave the artwork layout as it is in the updated zipped folder that I posted.

Team Amazon Artwork Feedback (Griffin)

Original Artwork

Modified Artwork

ned for
amazon
ks but
ories.
ession,
ate an
re best
stantly
s when
tomers
re that
worthy
zon has
can get

rowing
fidence
lysis to
rowser
ew and
filtering
ipped
uitive
reduces

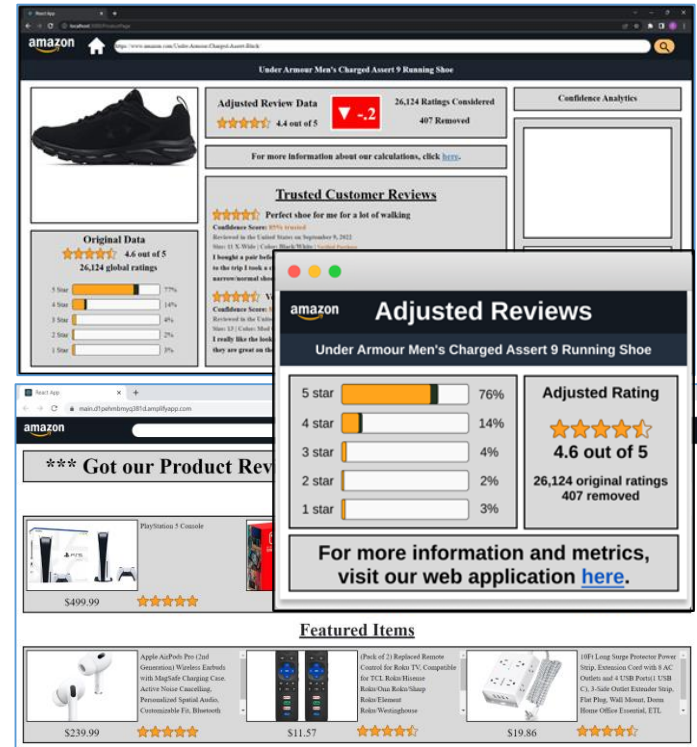
n Web
network
server-
oDB to
aker is



d for its
initially
panded

growing
ce Tool
calculate
ion that
ates an
ith low
lication
enticity,
sellers

n Web
ess web
minimize
s all-in-



Team Anthropocene Institute Artwork Feedback (Griffin)

Original Artwork

Feedback

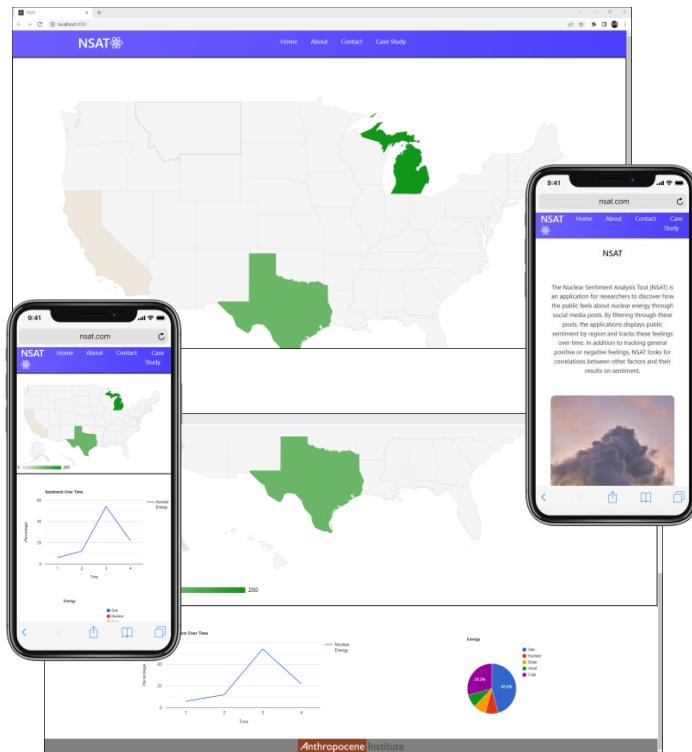
partners
ress the
projects
novation
ey may

energy as
climate
public is
source.
ed with
ormous

problem
energy
a map,
portant
s data is

for the
at the
row the
or such
ways to
nuclear
ding the
c about

and the
Google



Anthropocene Institute

- Your artwork and layout are basically good.
- I may have resized and moved things slightly.
- Leave the artwork layout as it is in the updated zipped folder that I posted.
- You don't need to do anything with respect to artwork for this round. Just submit back to me the new zip file that I upload for your team. Make sure that you download the NEW zip file and submit the NEW zip file.
- Nice work!
- Thanks!



Team Anthropocene Institute Artwork Feedback (Griffin)

Original Artwork

Modified Artwork

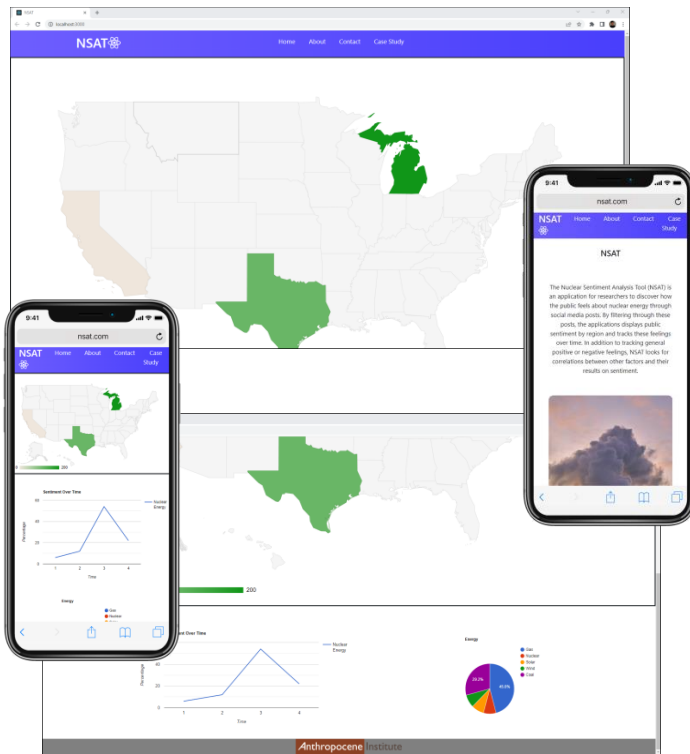
partners
ress the
projects
novation
ey may

energy as
climate
public is
source.
ed with
ormous

problem
energy
a map,
important
s data is

for the
at the
now the
or such
ways to
nuclear
ding the
about

and the
Google



Anthropocene Institute

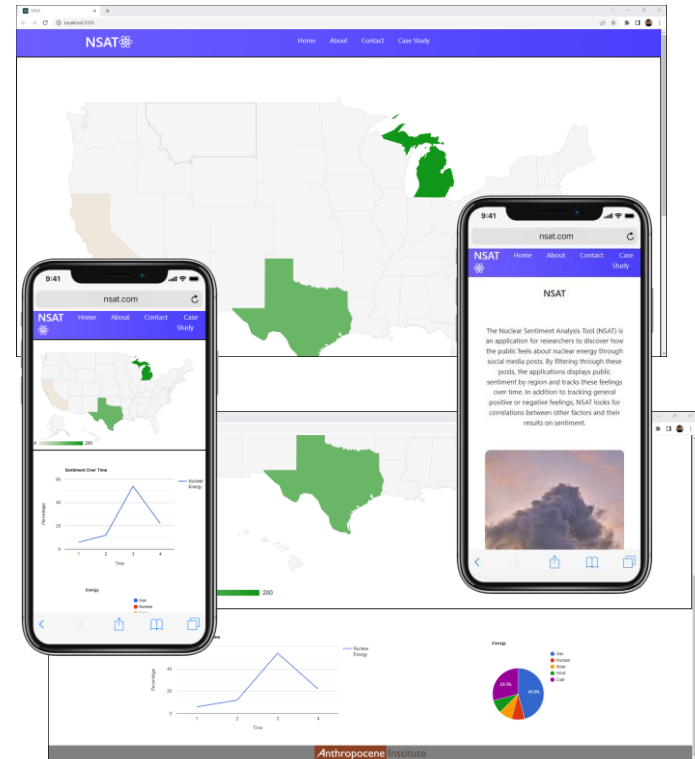
partners
ress the
projects
novation
ey may

energy as
climate
public is
source.
ed with
ormous

problem
energy
a map,
important
s data is

for the
at the
now the
or such
ways to
nuclear
ding the
about

and the
Google



Anthropocene Institute



Team Atomic Object Artwork Feedback (Griffin)

Original Artwork

Feedback

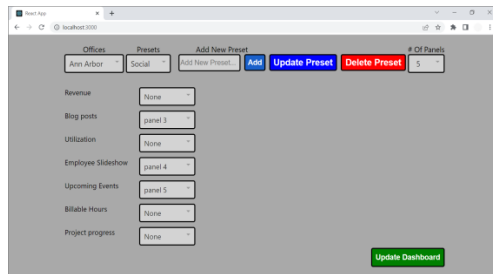
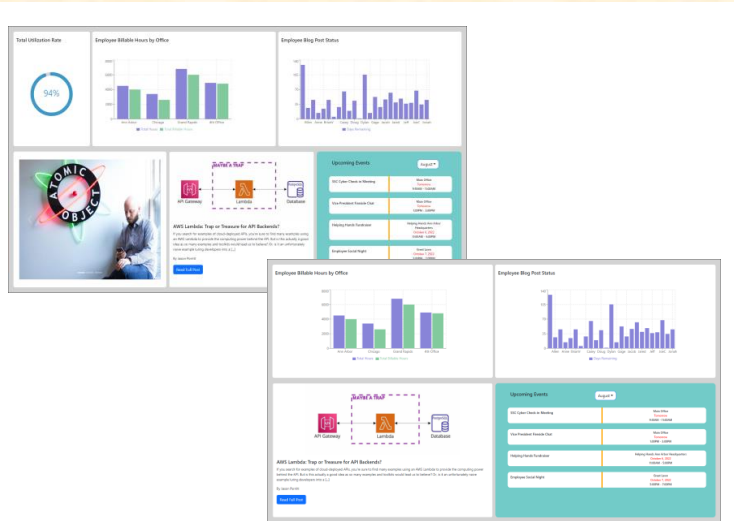
development software, are an ongoing, and

ed on a metrics es. The ions on displaying focus on

ed a new n about shboard s well as ng blog

customize rd link board by provides specific ows the s and an on of the

HTML/CSS, end, we in APIs,



- Your artwork and layout are basically good.
- I may have resized and moved things slightly.
- Leave the artwork layout as it is in the updated zipped folder that I posted.
- You don't need to do anything with respect to artwork for this round. Just submit back to me the new zip file that I upload for your team. Make sure that you download the NEW zip file and submit the NEW zip file.
- Nice work!
- Thanks!

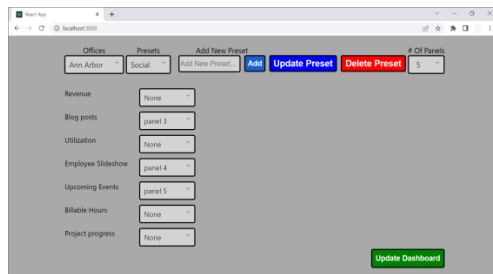
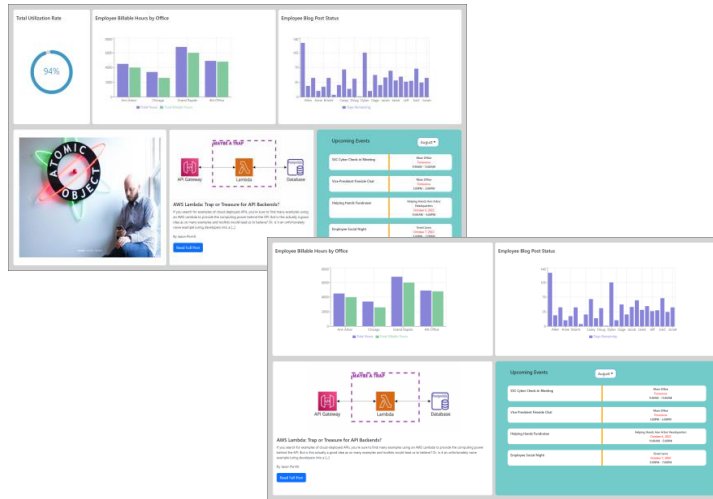


Team Atomic Object Artwork Feedback (Griffin)

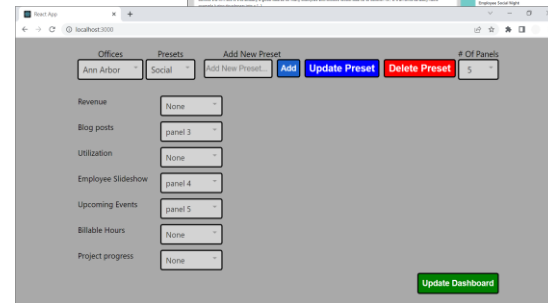
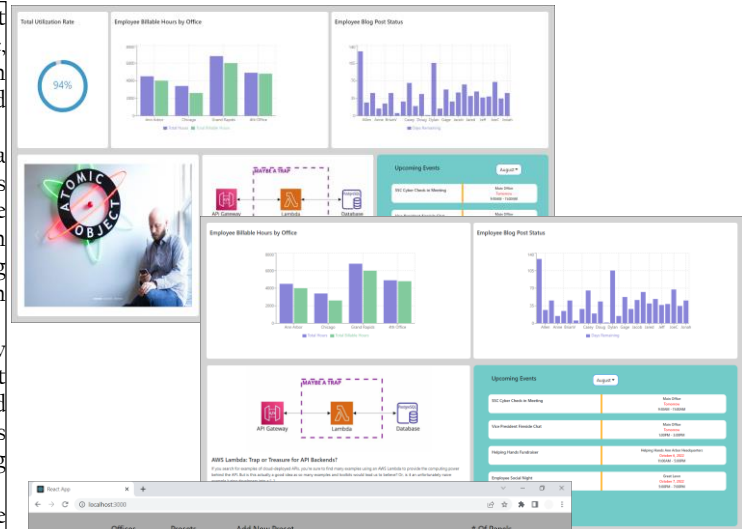
Original Artwork

Modified Artwork

development software, are an ongoing, and focused on a metrics dashboard. The focus on displaying a new dashboard as well as a blog post. The dashboard provides specific views of the data and an API endpoint, we use APIs,



development software, are an ongoing, and focused on a metrics dashboard. The focus on displaying a new dashboard as well as a blog post. The dashboard provides specific views of the data and an API endpoint, we use APIs,



Team Auto-Owners Artwork Feedback (Tommy)

Original Artwork

Feedback

ny that
o nearly
Owners

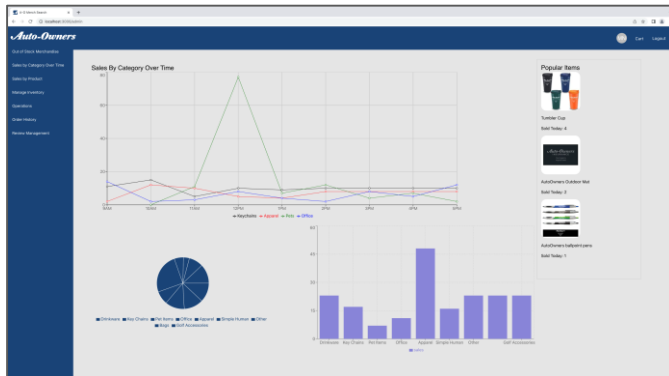
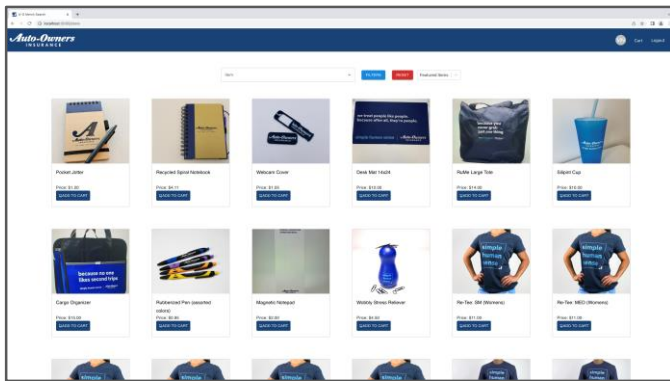
sociates
pany.
urchase
y hand
Owners
use the

the last
sumers

ns as an
ompany
chasing
d view
est suits
sier for
relevant

rse, and
devices
ory data
tes are

ontend,
hosting



Auto-Owners
INSURANCE

- Your artwork and layout look great.
- I may have resized and moved things slightly.
- Leave the artwork layout as it is in the updated zipped folder that I posted.
- You don't need to do anything with respect to artwork for this round. Just submit back to me the new zip file that I upload for your team. Make sure that you download the NEW zip file and submit the NEW zip file.
- Nice work!
- Thanks!



Team Auto-Owners Artwork Feedback (Tommy)

Original Artwork

Modified Artwork

any that
o nearly
Owners

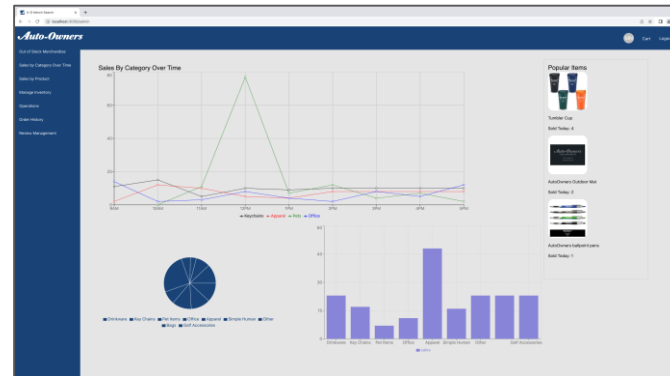
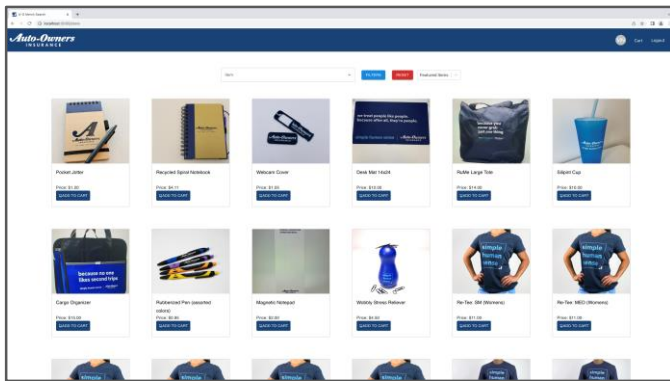
sociates
pany.
urchase
y hand
Owners
use the

the last
sumers

ns as an
ompany
chasing
d view
est suits
sier for
relevant

7se, and
devices
ory data
tes are

ontend,
hosting



Auto-Owners
INSURANCE

any that
o nearly
Owners

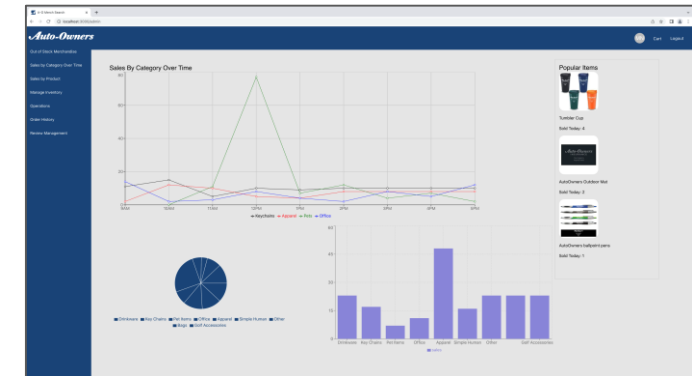
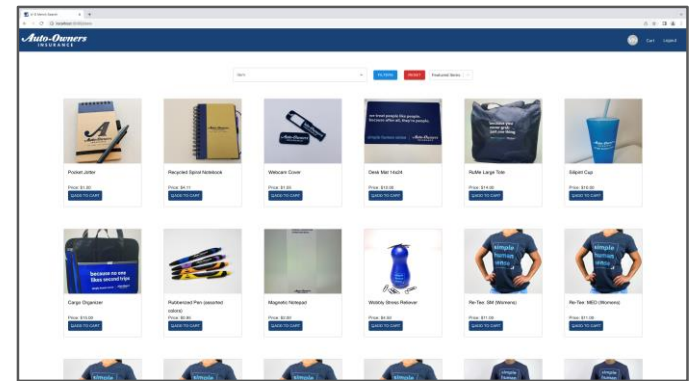
sociates
pany.
urchase
y hand
Owners
use the

the last
sumers

ns as an
ompany
chasing
d view
est suits
sier for
relevant

7se, and
devices
ory data
tes are

ontend,
hosting



Auto-Owners
INSURANCE

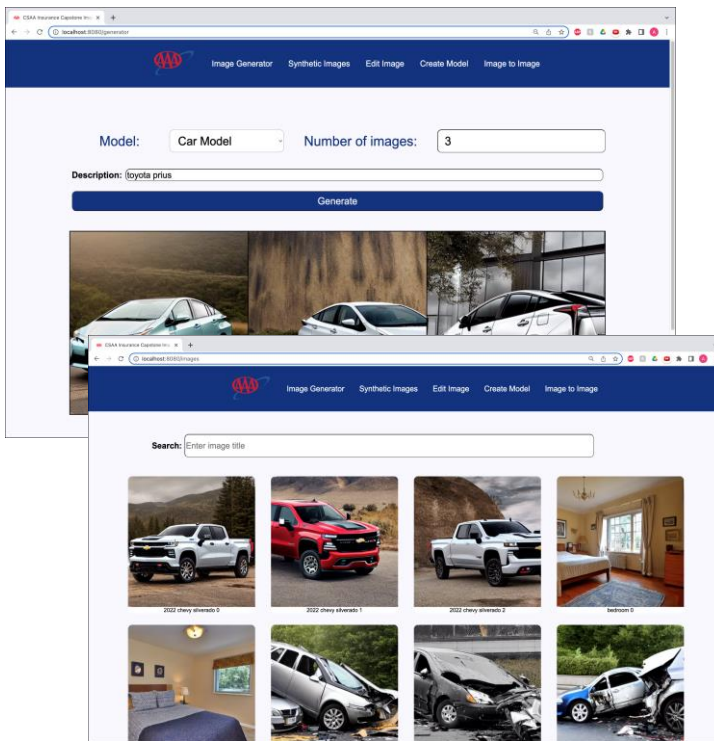


Team CSAA Insurance Artwork Feedback (Tommy)

Original Artwork

Feedback

- Your artwork and layout look great.
- I may have resized and moved things slightly.
- Leave the artwork layout as it is in the updated zipped folder that I posted.
- You don't need to do anything with respect to artwork for this round. Just submit back to me the new zip file that I upload for your team. Make sure that you download the NEW zip file and submit the NEW zip file.
- Nice work!
- Thanks!



Creek,
y. They
e states

stry has
essful in
of data.
ypically
es.
project
ntists to
y might
minates

neration
type of
images

andard,
ain and
subject
oftware
rocess of
tomates
ng new

HTML,
iffusion
on Web
esulting

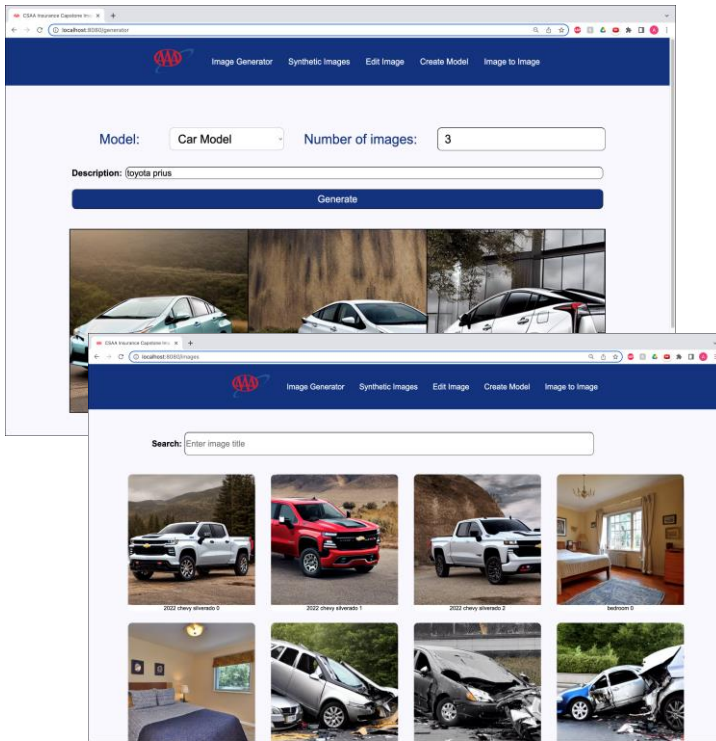


Team CSAA Insurance Artwork Feedback (Tommy)

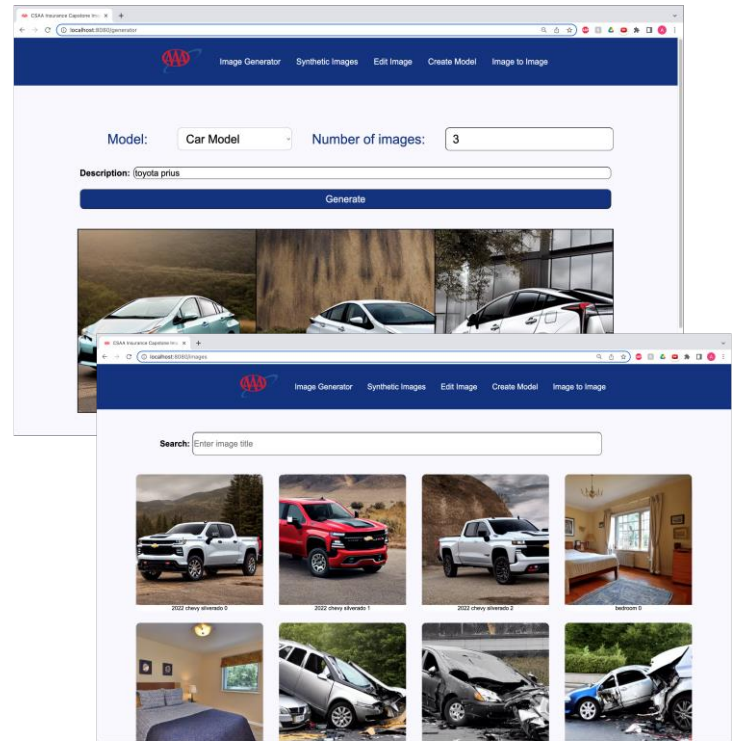
Original Artwork

Modified Artwork

Creek, y. They e states
stry has ssful in of data. ypically es.
project ntists to y might minutes
eration type of images
andard, ain and subject ofware ocross of tomatess ng new
HTML, iffusion on Web esulting



Creek, y. They e states
stry has ssful in of data. ypically es.
project ntists to y might minutes
eration type of images
andard, ain and subject ofware ocross of tomatess ng new
HTML, iffusion on Web esulting



Team GM Artwork Feedback (Luke)

Original Artwork

Feedback

omotive
de. GM
nds like

o large
ge, from
GM has
mented
eracting

logy is a
ng with
set as a
locked

put on
splays a
ows the

a signal
is. Once
that the
The help
adset.
ire and
working.

rogram
k server
r that is



- Your artwork and layout look great.
- I may have resized and moved things slightly.
- Leave the artwork layout as it is in the updated zipped folder that I posted.
- You don't need to do anything with respect to artwork for this round. Just submit back to me the new zip file that I upload for your team. Make sure that you download the NEW zip file and submit the NEW zip file.
- Nice work!
- Thanks!



Team GM Artwork Feedback (Luke)

Original Artwork

Modified Artwork

omotive
de. GM
nds like

o large
ge, from
GM has
mented
eracting

logy is a
ng with
set as a
locked

put on
splays a
ows the

a signal
is. Once
hat the
he help
adset.
ree and
working.

rogram
k server
r that is



omotive
de. GM
nds like

o large
ge, from
GM has
mented
eracting

logy is a
ng with
set as a
locked

put on
splays a
ows the

a signal
is. Once
hat the
he help
adset.
ree and
working.

rogram
k server
r that is



Team Google Artwork Feedback (Griffin)

Original Artwork

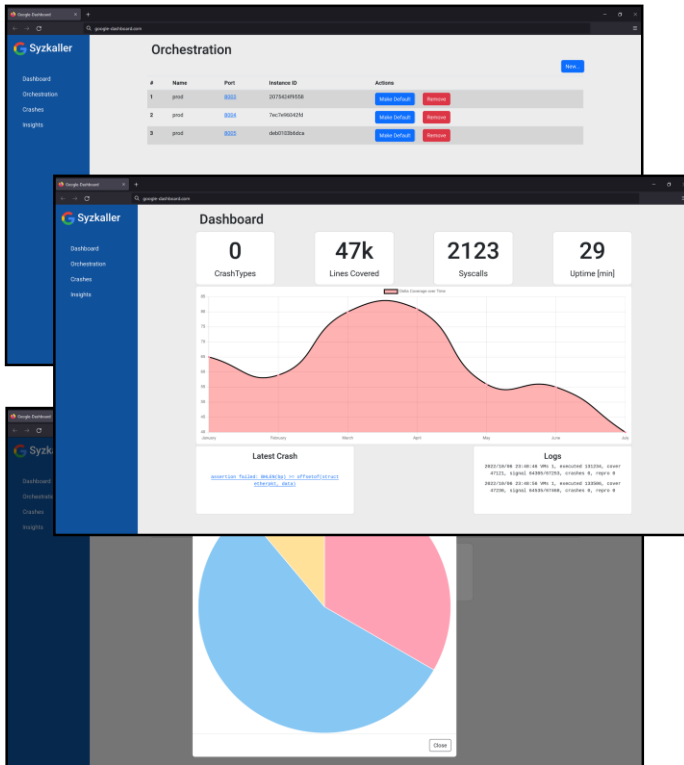
Feedback

ered in
nected
ertising
l mobile
devices

ently in
arantee
eve this
er. This
passing
ooks for
st.
xaller to
es on an
Android
d create

ot of a
review of
to stop
Our tool
crashes
fuzzer's
ove the

and the
rm. The
fuzzers.
our API
al time.



- Your artwork and layout look great.
- I may have resized and moved things slightly.
- Leave the artwork layout as it is in the updated zipped folder that I posted.
- You don't need to do anything with respect to artwork for this round. Just submit back to me the new zip file that I upload for your team. Make sure that you download the NEW zip file and submit the NEW zip file.
- Nice work!
- Thanks!



Team Google Artwork Feedback (Griffin)

Original Artwork

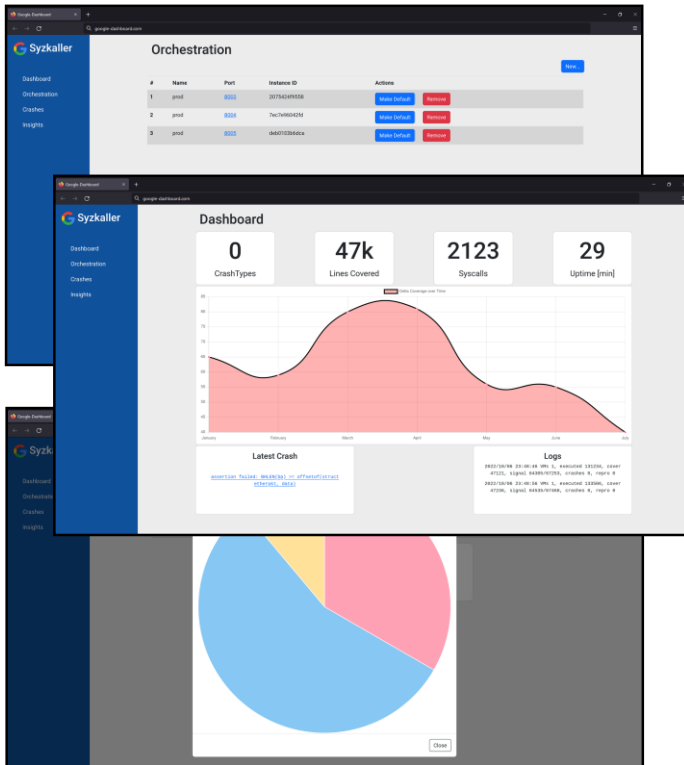
Modified Artwork

ered in
nected
vertising
l mobile
devices

ently in
arantee
eve this
er. This
passing
ooks for
st.
kaller to
s on an
Android
d create

ot of a
view of
to stop
Our tool
crashes
fuzzer's
ove the

and the
rm. The
fuzzers.
our API
al time.

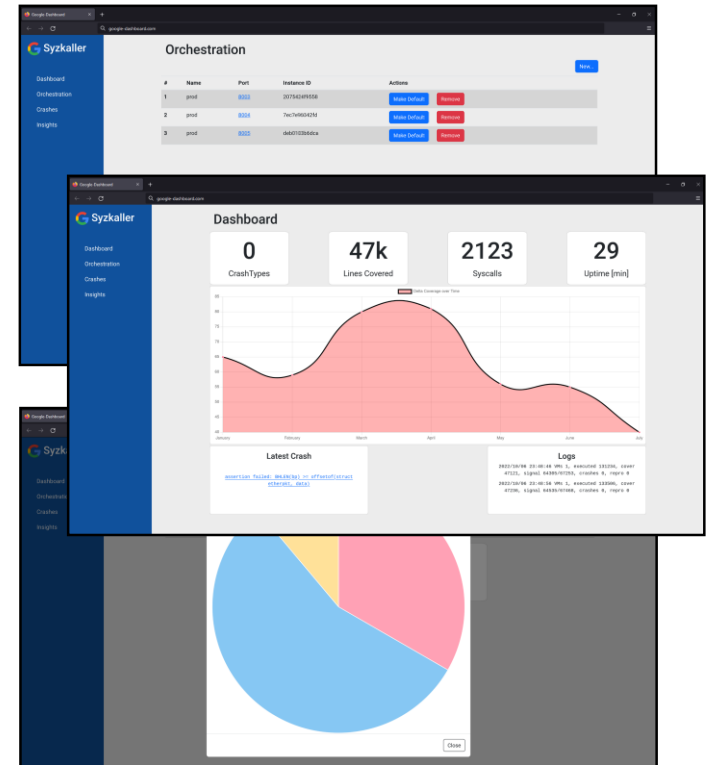


ered in
nected
vertising
l mobile
devices

ently in
arantee
eve this
er. This
passing
ooks for
st.
kaller to
s on an
Android
d create

ot of a
view of
to stop
Our tool
crashes
fuzzer's
ove the

and the
rm. The
fuzzers.
our API
al time.



Team Kellogg's Artwork Feedback (Tommy)

Original Artwork

Feedback



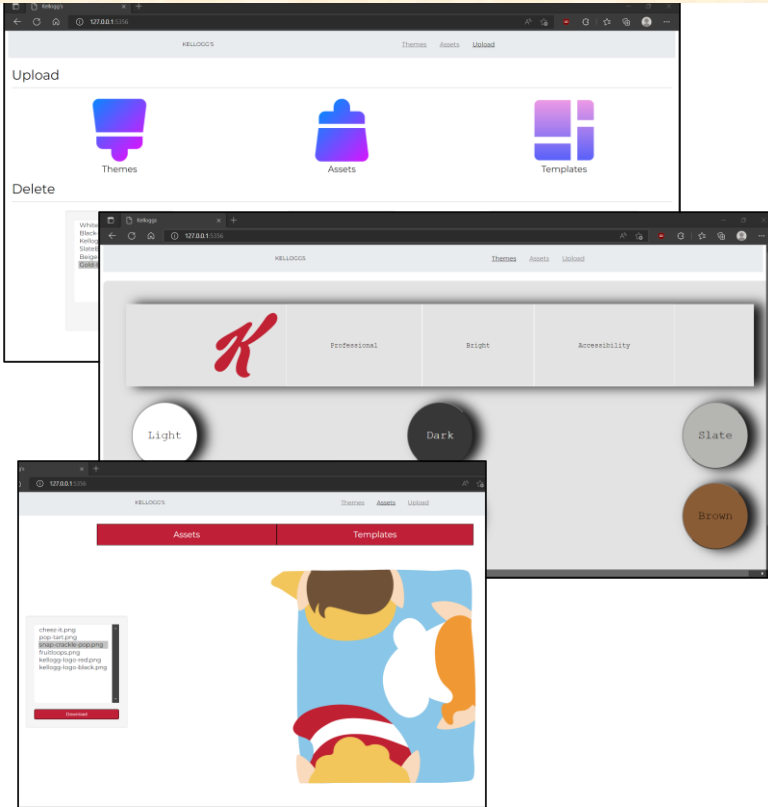
- Your artwork and layout look good.
- I may have resized and moved things slightly.
- Leave the artwork layout as it is in the updated zipped folder that I posted.
- I thought we agreed to use Frosted Flakes and Tony the Tiger for artwork-3. And, you cropped the sides, cutting off the sides of the web browser. I circled it in red. Please redo artwork-3 with Tony the tiger and do the screen capture again. Resize the web app first and then do the screen capture.



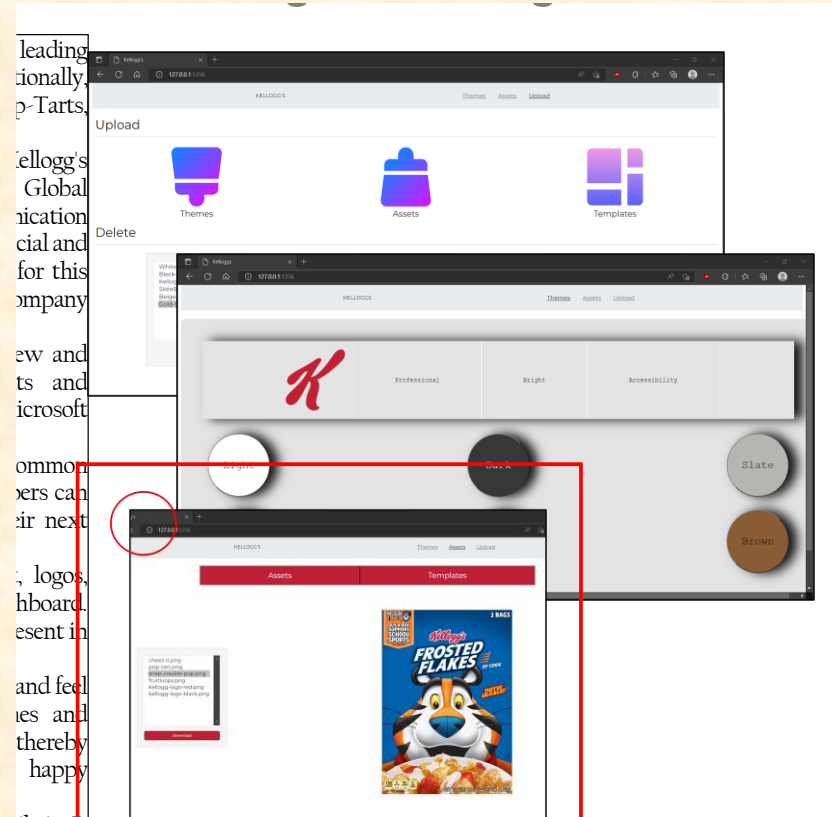
Team Kellogg's Artwork Feedback (Tommy)

Original Artwork

Modified Artwork



Kellogg's®



Kellogg's®



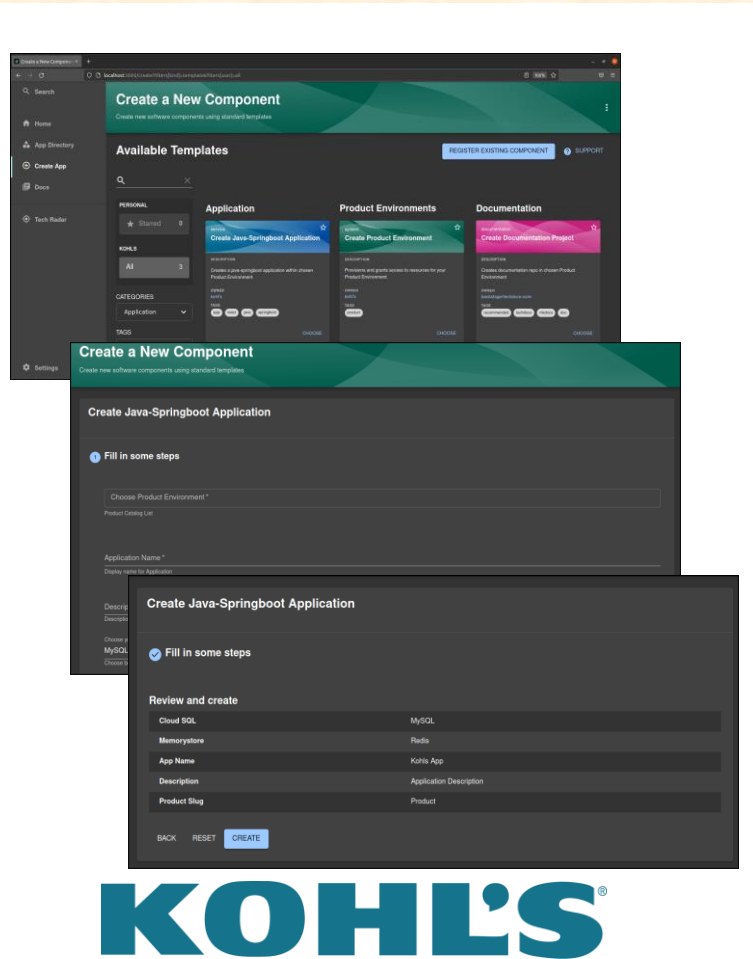
Team Kohl's Artwork Feedback (Tommy)

Original Artwork

Feedback

- Your artwork and layout look great.
- I may have resized and moved things slightly.
- Leave the artwork layout as it is in the updated zipped folder that I posted.
- You don't need to do anything with respect to artwork for this round. Just submit back to me the new zip file that I upload for your team. Make sure that you download the NEW zip file and submit the NEW zip file.
- Nice work!
- Thanks!

largest stores
ist to a greater software ne, with
pers to ack and process
yance.
hub for t allows e and in
of a job. for that
ience.
current r portal
oftware project
quired
led by ns have
ons are
so using
external

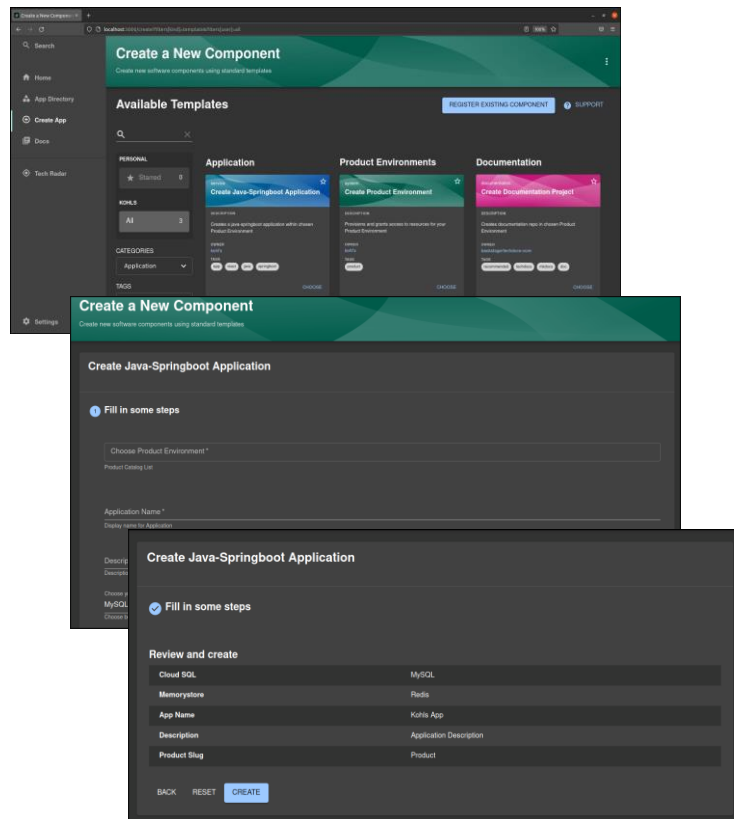


Team Kohl's Artwork Feedback (Tommy)

Original Artwork

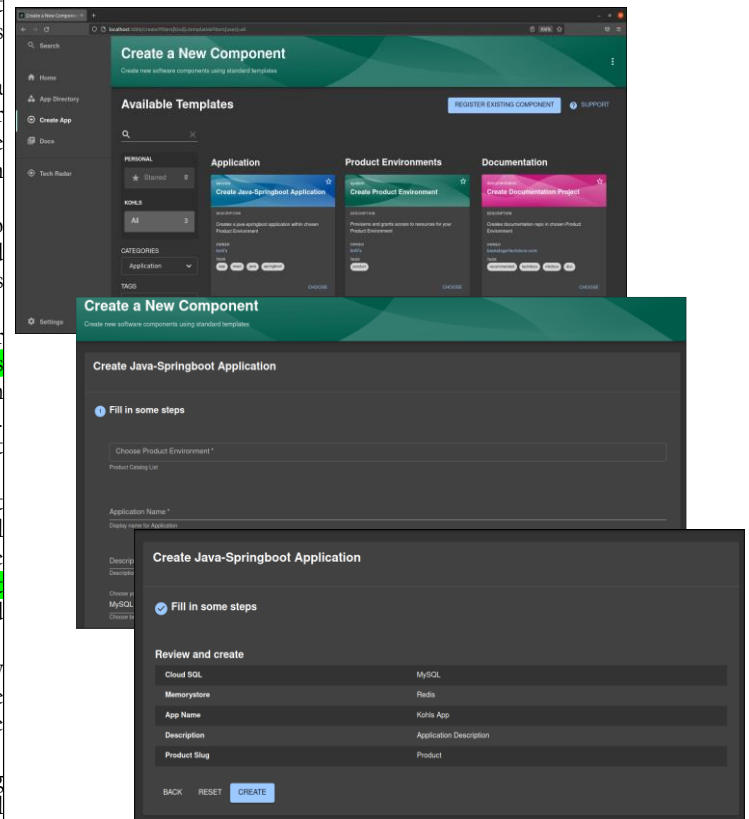
Modified Artwork

largest
stores
ist to a
greater
software
ne, with
pers to
ack and
process
yance.
hub for
t allows
e and in
of a job.
for that
ience.
current
r portal
software
project
required
led by
ns have
ons are
so using
external



KOHL'S

largest
stores
ist to a
greater
software
ne, with
pers to
ack and
process
yance.
hub for
t allows
e and in
of a job.
for that
ience.
current
r portal
software
project
required
led by
ns have
ons are
so using
external



KOHL'S

Team Lockheed Martin Space Artwork Feedback (Tommy)

Original Artwork

Feedback

Colorado,
systems,
Lockheed
solution
the Lunar
accurate
Such a
typical
ant, and
anomalous
ment by
pable of
LiDAR
ects its
of sensor
domain
omputer
sh this,
ware for
ch node
o-image
then fed
ference
NVIDIA
ealsense



- Your artwork and layout look great.
- I may have resized and moved things slightly.
- Leave the artwork layout as it is in the updated zipped folder that I posted.
- Nice job on the hardware!
- IMHO, your middle artwork is okay without a border.
- You don't need to do anything with respect to artwork for this round. Just submit back to me the new zip file that I upload for your team. Make sure that you download the NEW zip file and submit the NEW zip file.
- Nice work!
- Thanks!

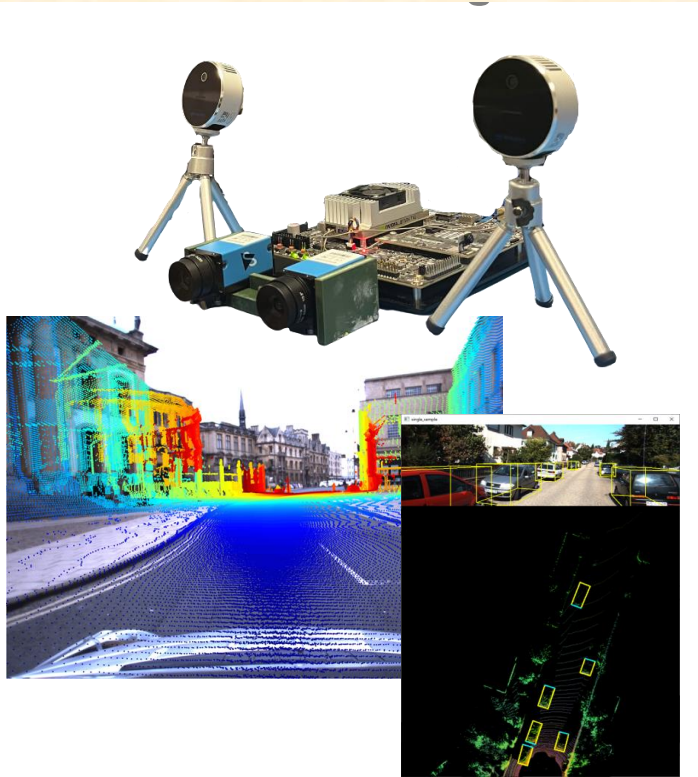


Team Lockheed Martin Space Artwork Feedback (Tommy)

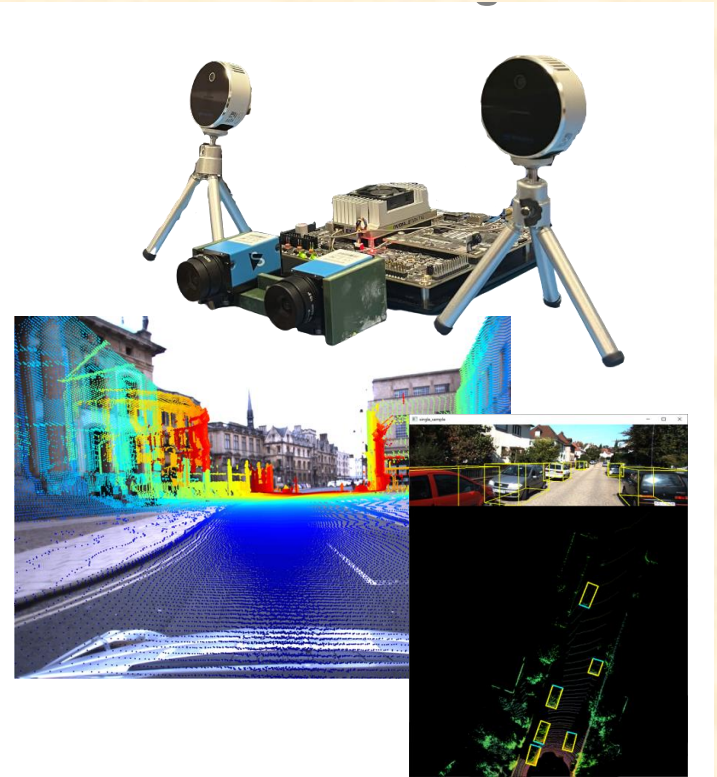
Original Artwork

Modified Artwork

Colorado, systems, Lockheed solution the Lunar accurate Such a typical ant, and nomous ment by pable of LiDAR ects its of sensor L domain mputer sh this, ware for ch node o-image hen fed erence NVIDIA ealsense



Colorado, systems, Lockheed solution the Lunar accurate Such a typical ant, and nomous ment by pable of LiDAR ects its of sensor L domain mputer sh this, ware for ch node o-image hen fed erence NVIDIA ealsense



Team Magna Artwork Feedback (Luke)

Original Artwork

Feedback

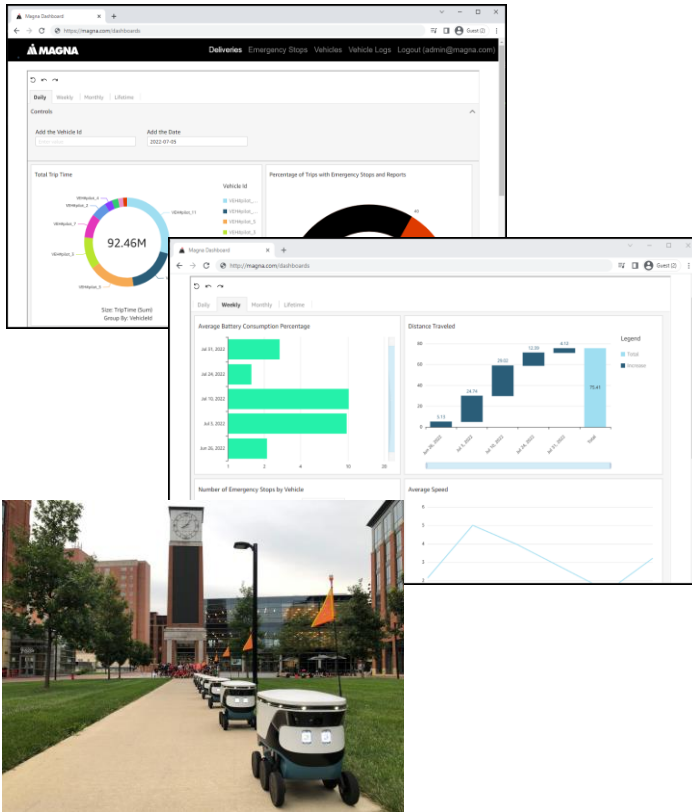
Magna is a...
Magna is a...
es. They...
Toyota...
Magna is...
customer

bots”, to...
e size of...
n by the...
delivery

he form...
nd. Our...
roviding...
it easier

shboard...
the fleet...
hboards...
battery...
way, the...
ms they

sensors...
a in an...
led into...
Amazon...
ards are...
ed using



- Your artwork 3 blends into the white background. You were supposed to have added a border. I added it for you. It'll cost you. If you update this artwork, add a border as per my instructions.
- Your artwork and layout are basically good.
- I may have resized and moved things slightly.
- Leave the artwork layout as it is in the updated zipped folder that I posted.
- You don't need to do anything with respect to artwork for this round. Just submit back to me the new zip file that I upload for your team. Make sure that you download the NEW zip file and submit the NEW zip file.



Team Magna Artwork Feedback (Luke)

Original Artwork

Modified Artwork

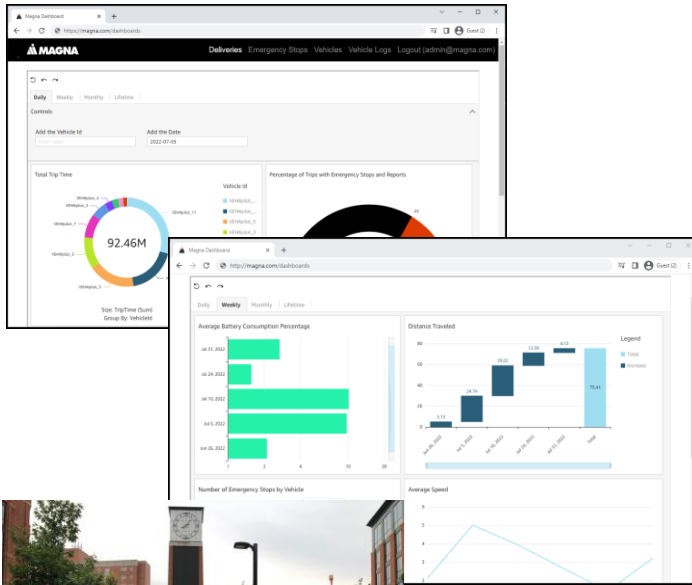
Magna is a...
Magna is a...
es. They...
Toyota...
Magna is...
customer

bots”, to...
e size of...
n by the...
delivery

he form...
nd. Our...
roviding...
it easier

shboard...
the fleet...
boards...
battery...
way, the...
ms they

sensors...
a in an...
led into...
Amazon...
ards are...
ed using



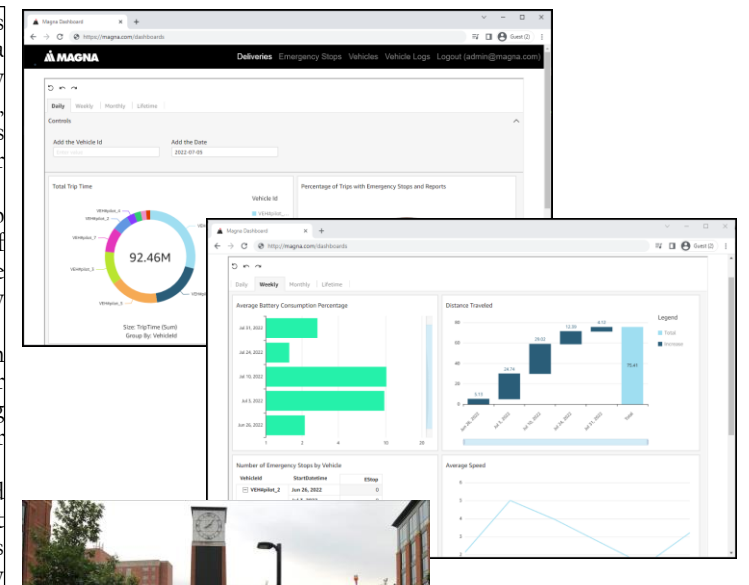
Magna is a...
Magna is a...
es. They...
Toyota...
Magna is...
customer

bots”, to...
e size of...
n by the...
delivery

he form...
nd. Our...
roviding...
it easier

shboard...
the fleet...
boards...
battery...
way, the...
ms they

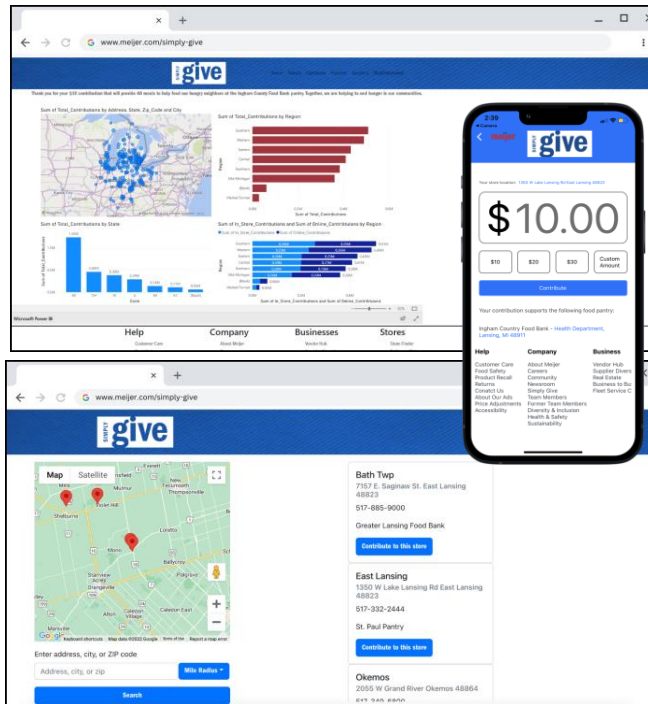
sensors...
a in an...
led into...
Amazon...
ards are...
ed using



Team Meijer Artwork Feedback (Tommy)

Original Artwork

Feedback



- Your artwork and layout look great.
- I may have resized and moved things slightly.
- Leave the artwork layout as it is in the updated zipped folder that I posted.
- You don't need to do anything with respect to artwork for this round. Just submit back to me the new zip file that I upload for your team. Make sure that you download the NEW zip file and submit the NEW zip file.
- Nice work!
- Thanks!

n Grand
as over
ies as a

cal food
million.
onation
to food
r wants
yze the

option
7 to the
anyone
without

oute and
is gives
count is
n to use
store.
ly Give
y Meijer

ustomer
bility for

nds are
ly. Our
ure SQL



Team Meijer Artwork Feedback (Tommy)

Original Artwork

Modified Artwork

n Grand
has over
ies as a

cal food
million.
onation
to food
r wants
yze the

option
7 to the
anyone
without

ute and
is gives
count is
n to use
e store.
ly Give
y Meijer

ustomer
ility for

nds are
ly. Our
re SQL



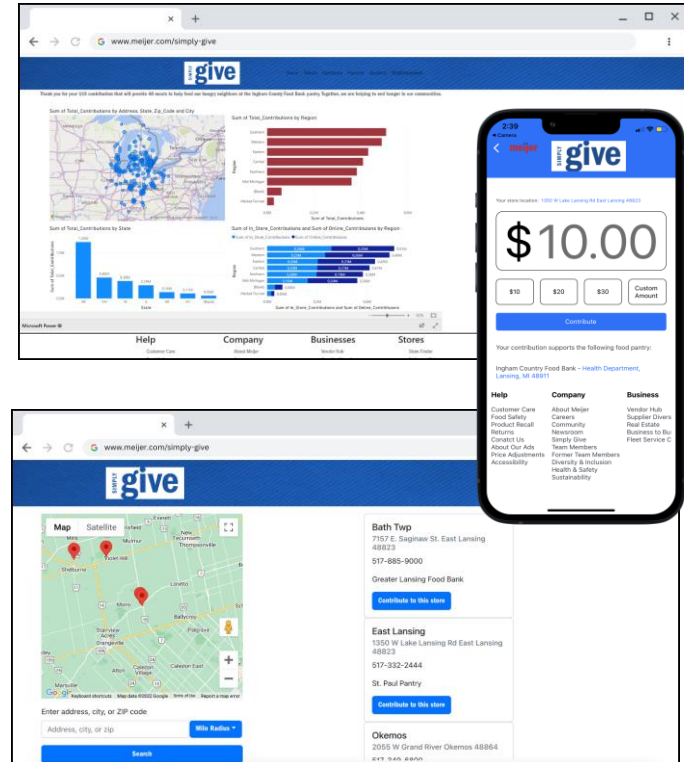
n Grand
has over
ies as a

cal food
million.
onation
to food
r wants
yze the

option
y to the
anyone
without

ute and
is gives
count is
n to use
e store.
ly Give
y Meijer

digital
marketing
s.
nds are
ly. Our
re SQL



Team Michigan State University Linguistics Artwork Feedback (Luke)

Original Artwork

Feedback

in the
provides
res and
impact
age.
maintain
way to
ers and
features
rose and
on had
oftware
Remote
p in the
res that
Mobile
but the
h being
o record
se with
llphone
s simple
tion are
everyone
ocus on
de base
nize the
starting
Android
eline to



- You had grouped your lower artwork. I had to ungroup them.
- Leave the artwork layout as it is in the updated zipped folder that I posted.
- You don't need to do anything with respect to artwork for this round. Just submit back to me the new zip file that I upload for your team. Make sure that you download the NEW zip file and submit the NEW zip file.
- Nice work!
- Thanks!



Team Michigan State University Linguistics Artwork Feedback (Luke)

Original Artwork

Modified Artwork

in the
provides
res and
impact
age.
maintain
way to
ers and
features
rose and
on had
oftware
Remote
p in the
res that
Mobile
but the
h being
o record
se with
llphone
s simple
tion are
everyone
ocus on
de base,
nize the
starting
Android
eline to



in the
provides
res and
impact
age.
maintain
way to
ers and
features
rose and
on had
oftware
Remote
p in the
res that
Mobile
but the
h being
o record
se with
llphone
s simple
tion are
everyone
ocus on
de base,
nize the
starting
Android
eline to

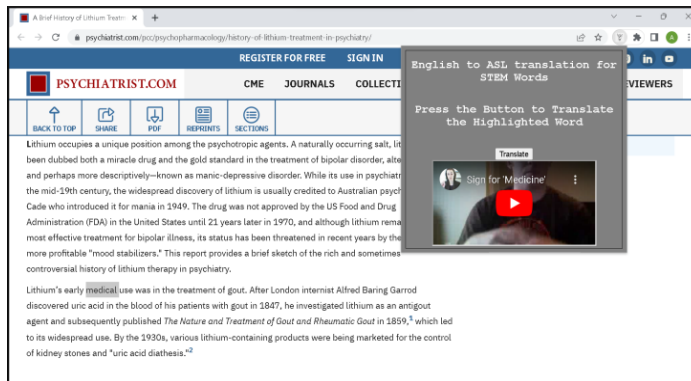
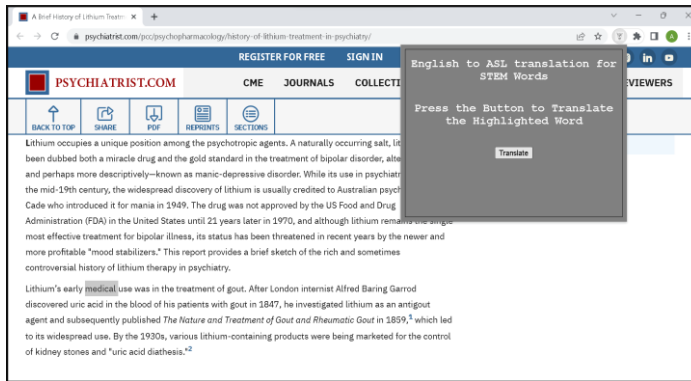


Team Microsoft Artwork Feedback (Luke)

Original Artwork

Feedback

technology systems. It is also a firm accelerates ration is words and graduate reader on scientific those who translates suggestions tension. s which scientific with the rat gets its ASL manually n video. search SS, and end is



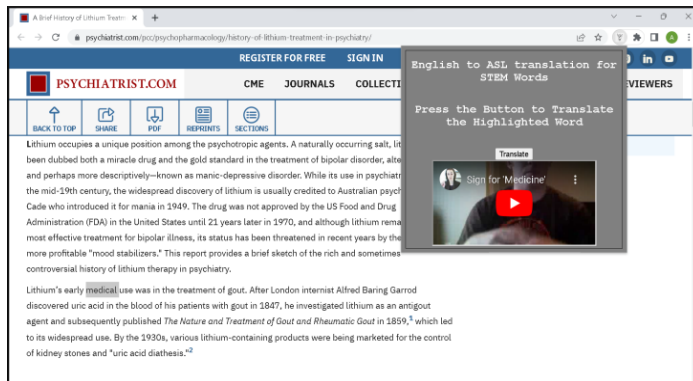
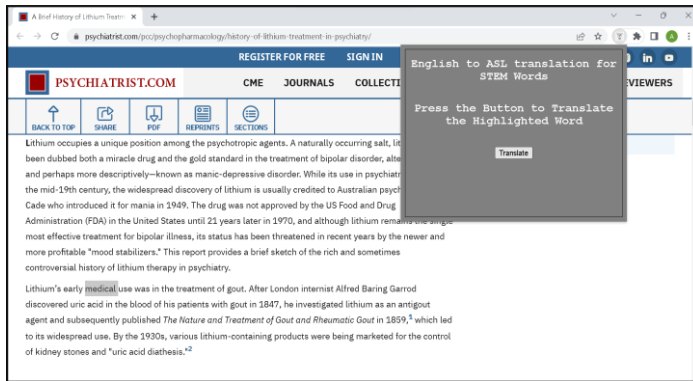
- Your artwork and layout are basically good, but it does not illustrate how your system works.
- Move the bottom artwork to the top.
- Create a lower image with screen grabs of someone signing “medical” and overlay the letters on the signer.
- Get it?

Team Microsoft Artwork Feedback (Luke)

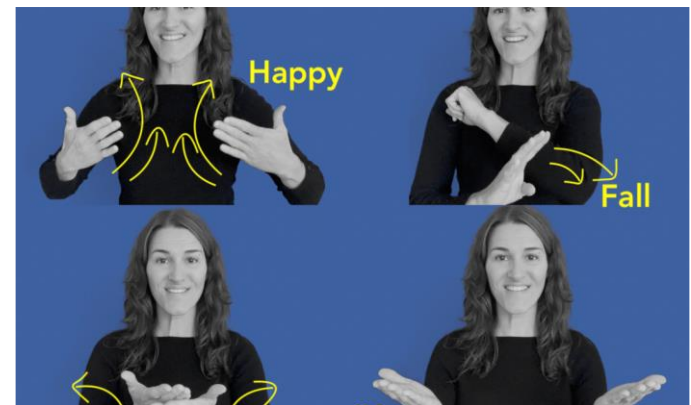
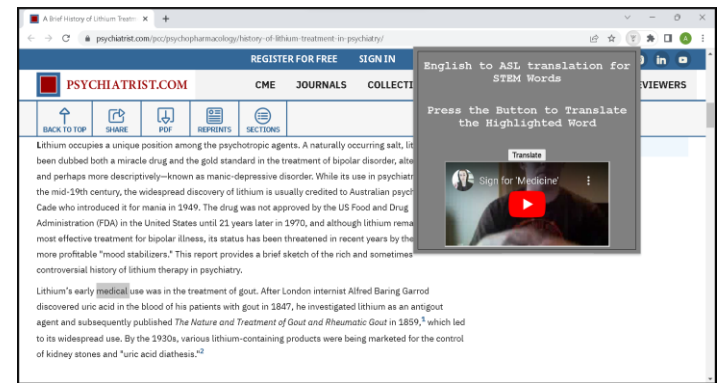
Original Artwork

Modified Artwork

technology systems, it is also a firm believer that education is the key to a better future. I am a graduate of the University of Michigan and I am currently a student at the University of Michigan. I am a member of the Psi Chi Honor Society and I am a member of the Phi Kappa Phi Honor Society. I am a member of the Phi Kappa Phi Honor Society and I am a member of the Phi Kappa Phi Honor Society.



technology systems, it is also a firm believer that education is the key to a better future. I am a graduate of the University of Michigan and I am currently a student at the University of Michigan. I am a member of the Psi Chi Honor Society and I am a member of the Phi Kappa Phi Honor Society. I am a member of the Phi Kappa Phi Honor Society and I am a member of the Phi Kappa Phi Honor Society.

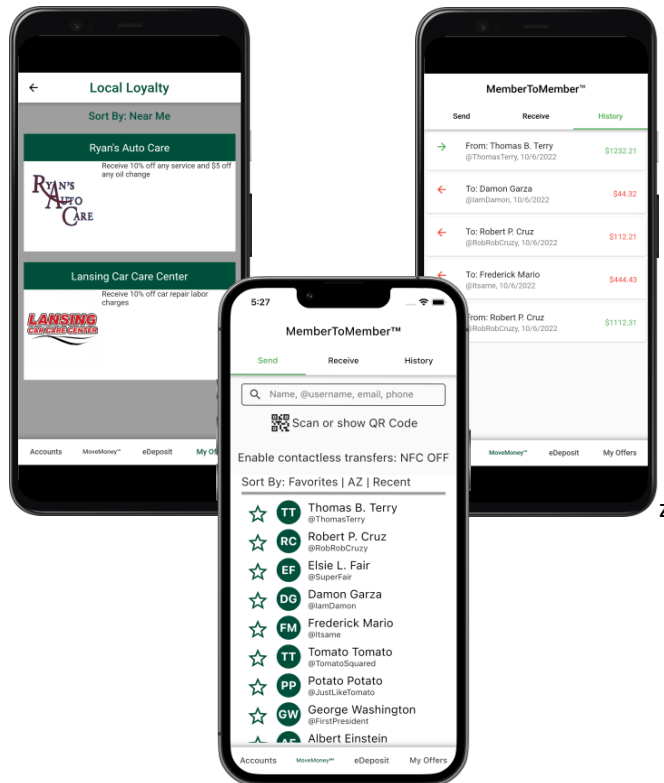


Team MSUFCU Artwork Feedback (Tommy)

Original Artwork

Feedback

MSUFCU) university and members and branch community
MSUFCU towards loyalty.
businesses; accounts — businesses
increasing members experience.
story and provide shopping.
free shop of a discount
ing fund, which device
es. It is language to MySQL



- Are the names in the images in the data that MSUFCU gave you? Or did you make up those names. If it's the former, then okay. If you made up the names, redo your names with more "realistic" names that are less goofy.
- Other than the above, your artwork and layout are great.
- I resized and moved things slightly.
- Leave the artwork layout as it is in the updated zipped folder that I posted.
- If the names are from MSUFCU, you don't need to do anything with respect to artwork for this round. Just submit back to me the new zip file that I upload for your team. Make sure that you download the NEW zip file and submit the NEW zip file.
- If you created the "goofy" names, redo the names and recapture and resubmit your artwork.

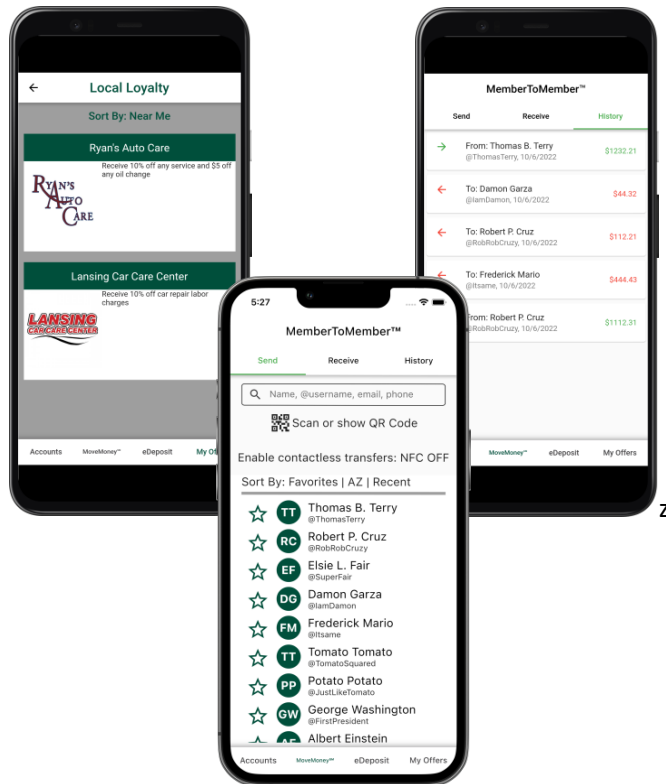


Team MSUFCU Artwork Feedback (Tommy)

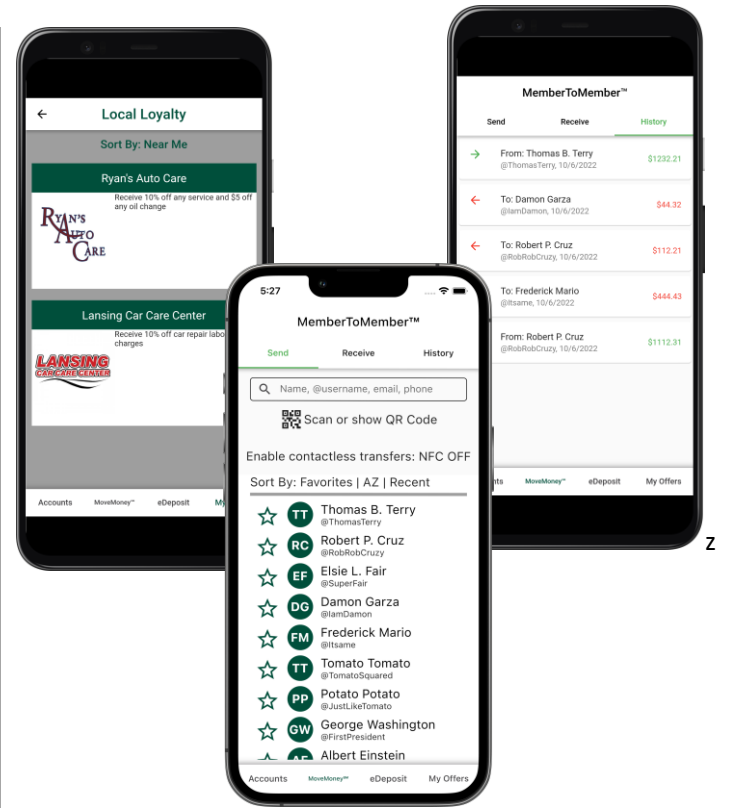
Original Artwork

Modified Artwork

UFCU) sity and ers and branch community
 SUFCU vards to yalty. inesses; ounts – sinesses
 reasing members rience. ory and provide opping. ee shop ion of a discount
 ng fund , which l device
 es. It is guage to MySQL



UFCU) sity and ers and branch community
 SUFCU vards to yalty. inesses; ounts – sinesses
 reasing members rience. ory and provide opping. ee shop ion of a discount
 ng fund , which l device
 es. It is guage to MySQL



Team Roosevelt Innovations Data Science Artwork Feedback (Luke)

Original Artwork

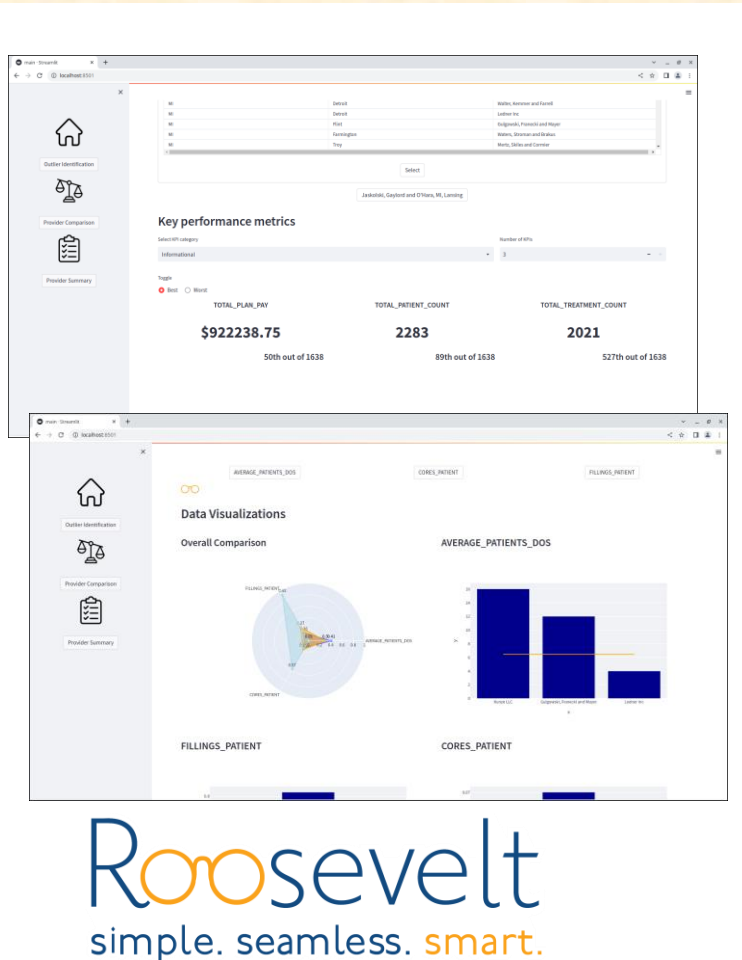
Feedback

ation to
urance
ibilities,
riers to
ness.
oosevelt
roviders
. A key
may be
found,
manual

es this
n tools
tion.
nomaly
gged as
om this
either a

est for a
pecified
h views
ehavior.
blematic
bility to
cost of

ont-end
e outlier
yTorch.



- Your artwork and layout look great.
- I may have resized and moved things slightly.
- Leave the artwork layout as it is in the updated zipped folder that I posted.
- You don't need to do anything with respect to artwork for this round. Just submit back to me the new zip file that I upload for your team. Make sure that you download the NEW zip file and submit the NEW zip file.
- Nice work!
- Thanks!



Team Roosevelt Innovations Data Science Artwork Feedback (Luke)

Original Artwork

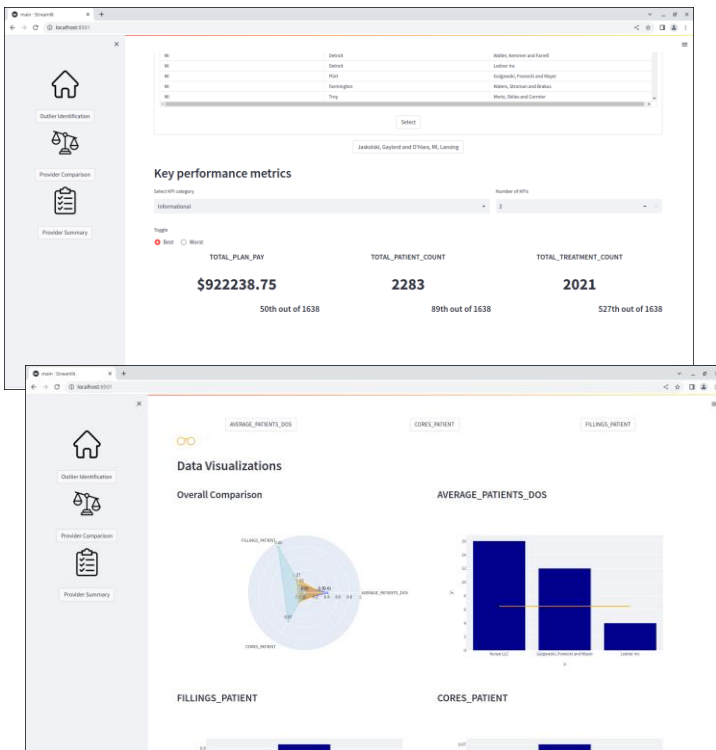
Modified Artwork

ation to
 surance
 abilities,
 rriers to
 ness.
 osevelt
 roviders
 . A key
 may be
 1 found,
 manual

es this
 n tools
 tion.
 nomaly
 gged as
 om this
 either a

est for a
 pecified
 h views
 ehavior.
 lematic
 ility to
 cost of

ont-end
 e outlier
 yTorch.



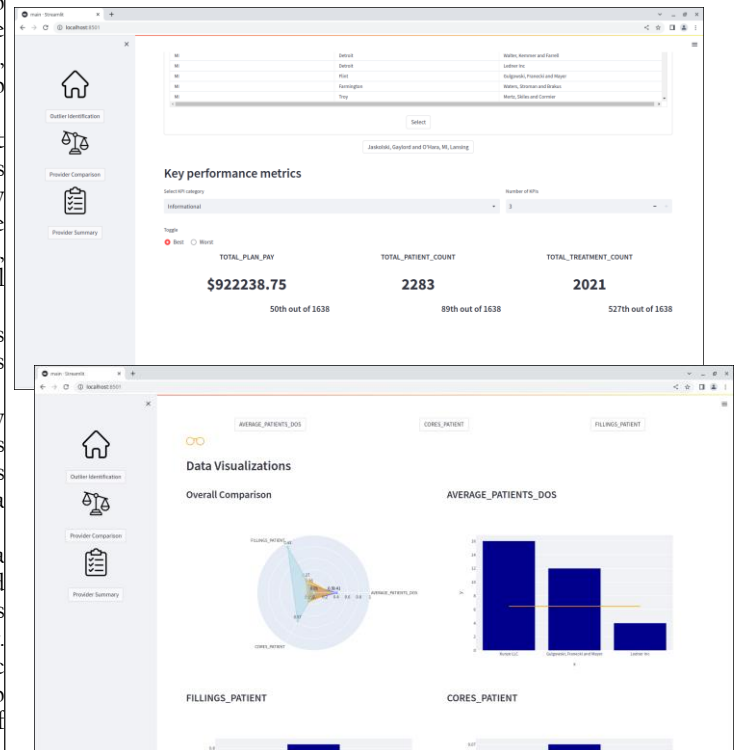
Roosevelt
 simple. seamless. smart.

ation to
 surance
 abilities,
 rriers to
 ness.
 osevelt
 roviders
 . A key
 may be
 1 found,
 manual

es this
 n tools
 tion.
 nomaly
 gged as
 om this
 either a

est for a
 pecified
 h views
 ehavior.
 lematic
 ility to
 cost of

ont-end
 e outlier
 yTorch.



Roosevelt
 simple. seamless. smart.



Team Roosevelt Innovations Knowledge Science Artwork Feedback (Luke)

Original Artwork

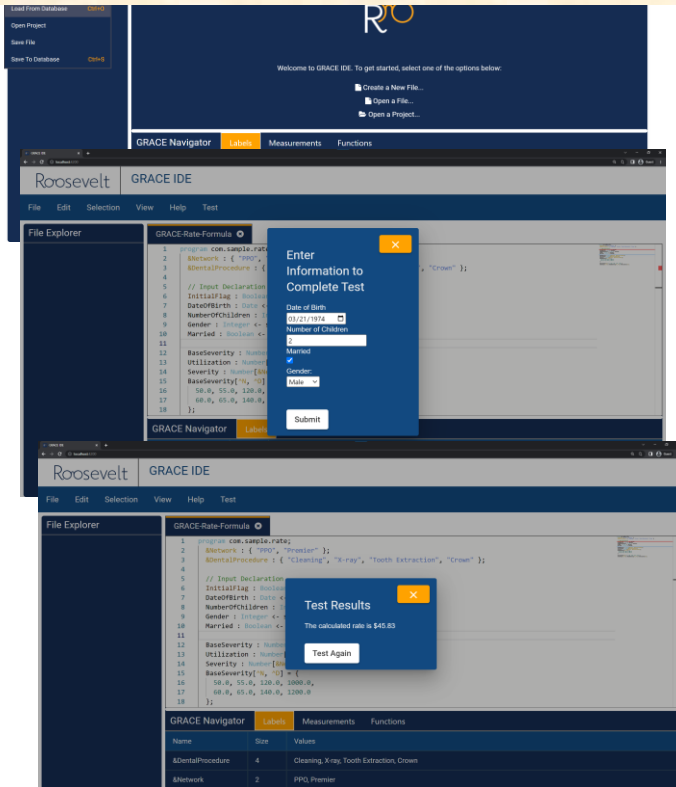
Feedback

creates
osevelt
re they
ation to
rached
gnostic

unies is
develop
must be
ommon
ts that
alculate

res how
ulation
vations'
way for
ely and
easy as
clicking
a rate

testing,
among
ies to
ofitable.
lar and
ack end
ion files



- You added borders to your artwork by adding borders to the images in the Word document. You were supposed to add the borders to the png images. I did it for you. It'll cost you.
- Other than the above, your artwork and layout are basically good.
- I may have resized and moved things slightly.
- Leave the artwork layout as it is in the updated zipped folder that I posted.
- You don't need to do anything with respect to artwork for this round. Just submit back to me the new zip file that I upload for your team. Make sure that you download the NEW zip file and submit the NEW zip file.

Roosevelt
simple. seamless. smart.



Team Roosevelt Innovations Knowledge Science Artwork Feedback (Luke)

Original Artwork

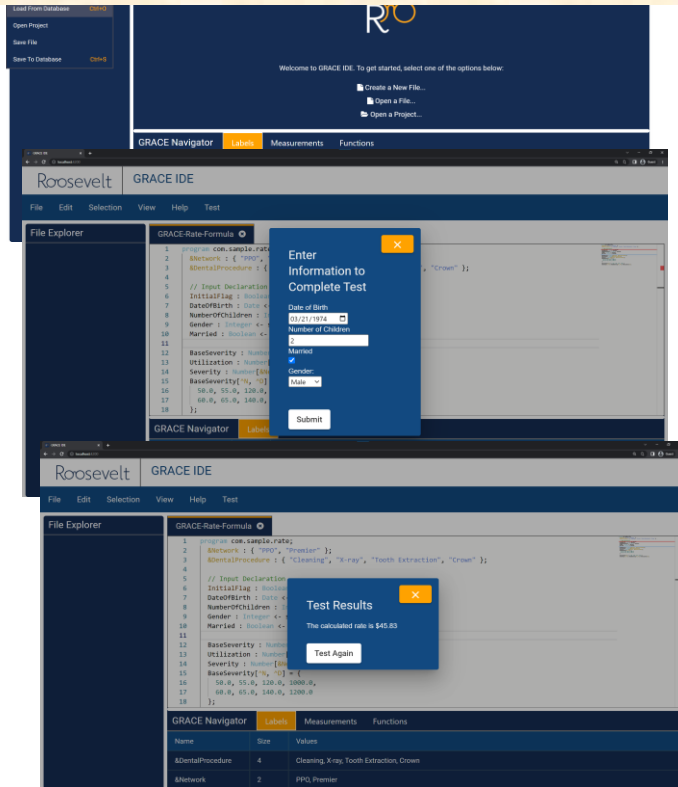
Modified Artwork

creates
osevelt
re they
ation to
ranchd
gnostic

unies is
develop
must be
ommon
ts that
alculate

res how
ulation
vations'
way for
dly and
easy as
clicking
a rate

testing,
among
ies to
ofitable.
ar and
ack end
ion files



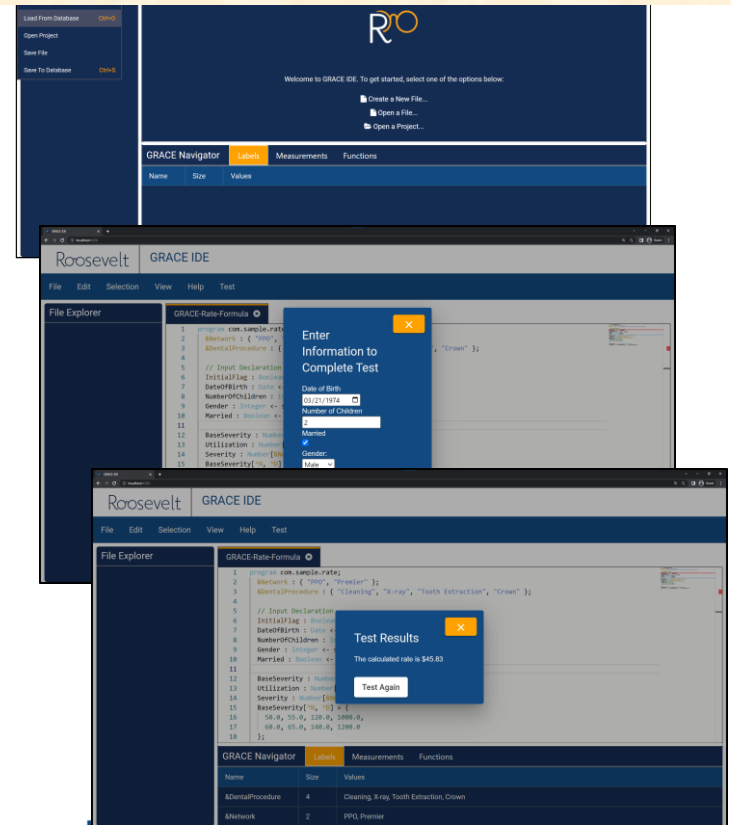
Roosevelt
simple. seamless. smart.

creates
osevelt
re they
ation to
ranchd
gnostic

unies is
develop
must be
ommon
ts that
alculate

res how
ulation
vations'
way for
dly and
easy as
clicking
a rate

testing,
among
ies to
ofitable.
ar and
ack end
ion files



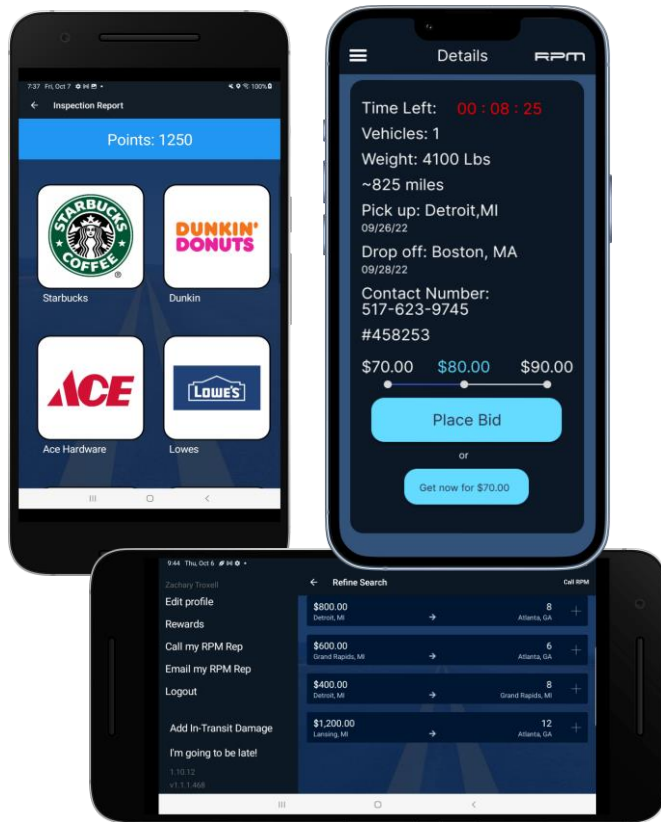
Roosevelt
simple. seamless. smart.



Team RPM Artwork Feedback (Tommy)

Original Artwork

Feedback



- Your artwork and layout look great.
- I may have resized and moved things slightly.
- Leave the artwork layout as it is in the updated zipped folder that I posted.
- You don't need to do anything with respect to artwork for this round. Just submit back to me the new zip file that I upload for your team. Make sure that you download the NEW zip file and submit the NEW zip file.
- Nice work!
- Thanks!

Team RPM Artwork Feedback (Tommy)

Original Artwork

Modified Artwork

socializes
s. On a
les and
n Royal

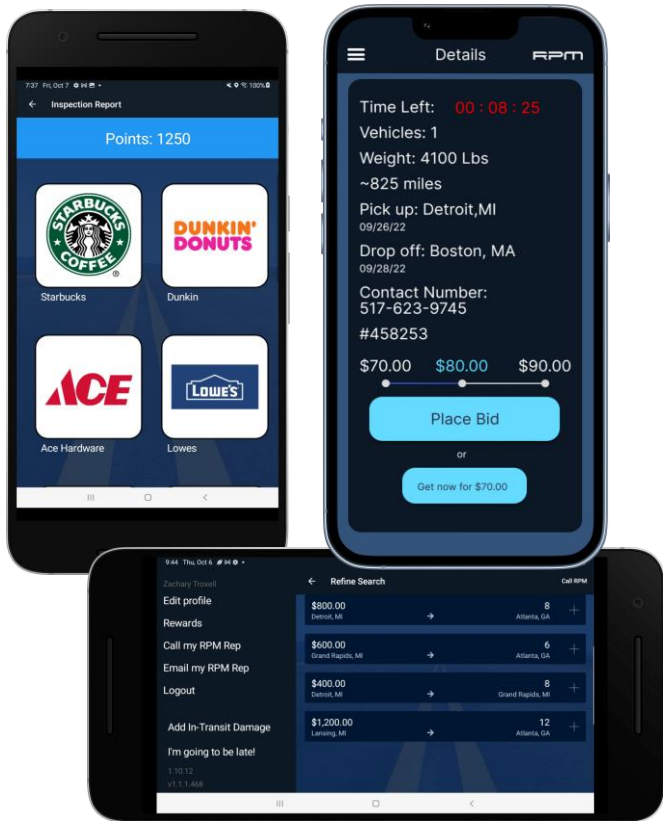
petitive
tions to
while on
making

enhance
on. The
RPM to
reactive
equipment
us, and

nts for
finding
to refine

y. The
chieve a
on of gift

atform-
ys tools
it-learn



socializes
s. On a
les and
n Royal

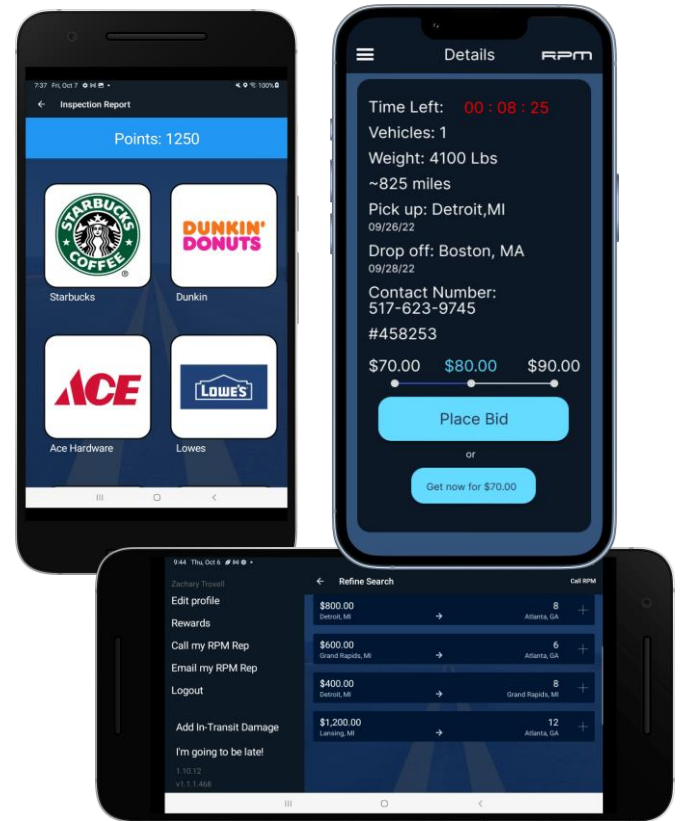
petitive
tions to
while on
making

enhance
on. The
RPM to
reactive
equipment
us, and

nts for
finding
to refine

y. The
chieve a
on of gift

atform-
ys tools
it-learn



Team Stryker Artwork Feedback (Luke)

Original Artwork

Feedback

provides
er the
BY,

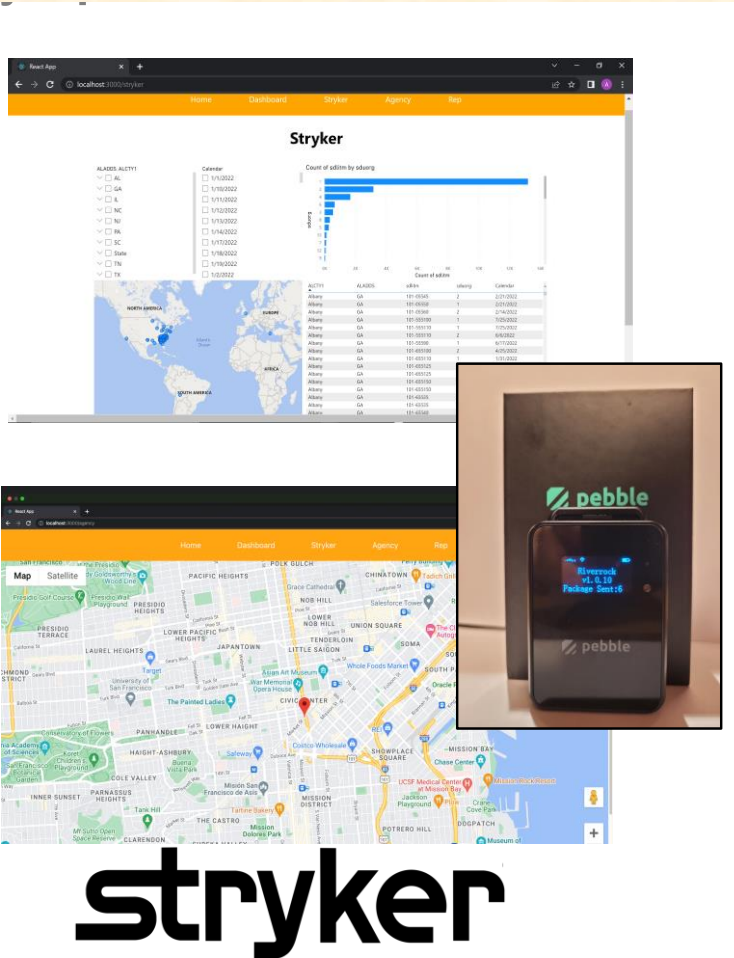
/
em.
nd
s that
the

in

kit is

o-date
tory is
main
s.
S,

e for
pSync



- You added borders to your artwork by adding borders to the images in the Word document. You were supposed to add the borders to the png images. I did it for you. It'll cost you.
- Other than the above, your artwork and layout are basically good.
- I may have resized and moved things slightly.
- Leave the artwork layout as it is in the updated zipped folder that I posted.
- You don't need to do anything with respect to artwork for this round. Just submit back to me the new zip file that I upload for your team. Make sure that you download the NEW zip file and submit the NEW zip file.
- Aside: Your project description is way too short. It only fills about 60% of the textbox. Luke and James will write more for you, but it'll cost you.

stryker



Team Stryker Artwork Feedback (Luke)

Original Artwork

Modified Artwork

provides
er the
gy,

/
em.
nd
s that
the

in

kit is

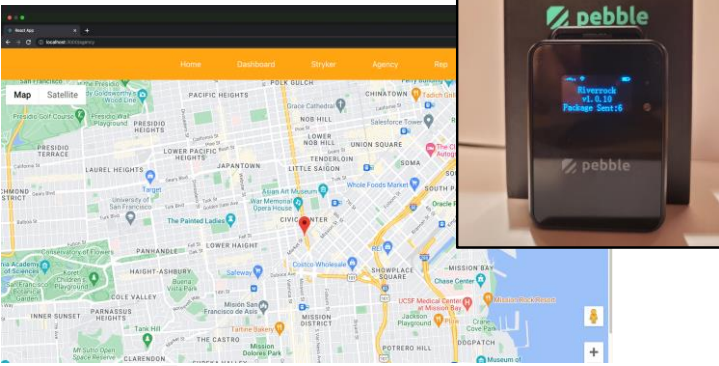
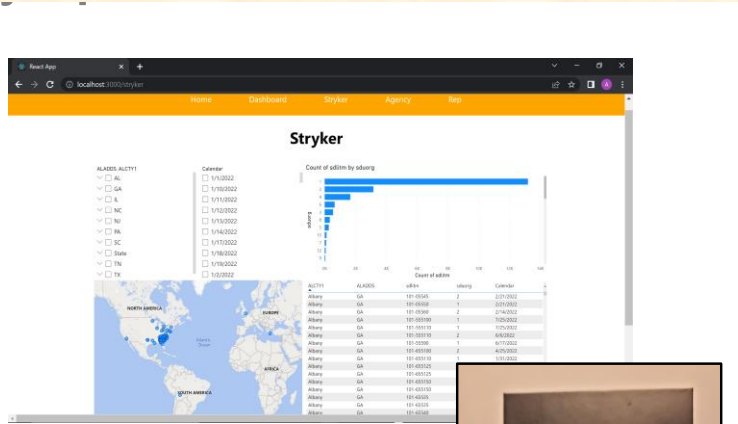
o-date
tory is
main
s.
s,

e for
pSync

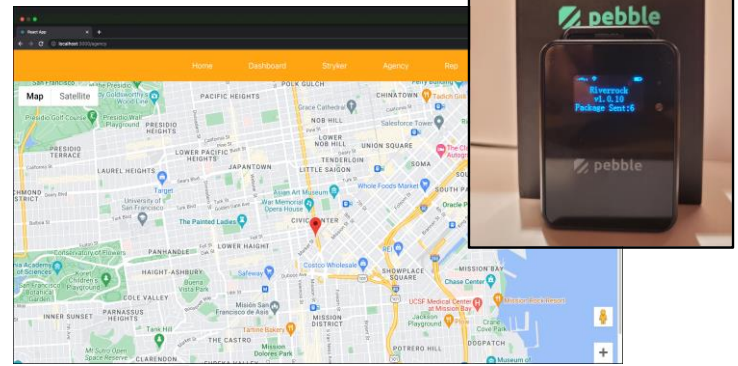
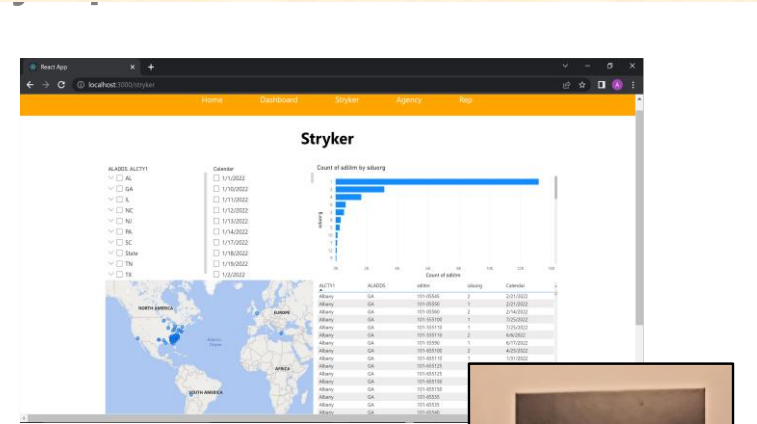
ld class
surgical
an 100

ionally,
for and
utmost
ons that
chain.
Stryker
v where
ry. GPS
ocation
utable,
provides

ack end
sors are
y AWS



stryker



stryker



Team Targets' Tip Artwork Feedback (Griffin)

Original Artwork

Feedback

- Your artwork and layout are good.
- I resized and moved things slightly.
- Leave the artwork layout as it is in the updated zipped folder that I posted.
- You don't need to do anything with respect to artwork for this round. Just submit back to me the new zip file that I upload for your team. Make sure that you download the NEW zip file and submit the NEW zip file.

Michigan
support for
s, types
rove the

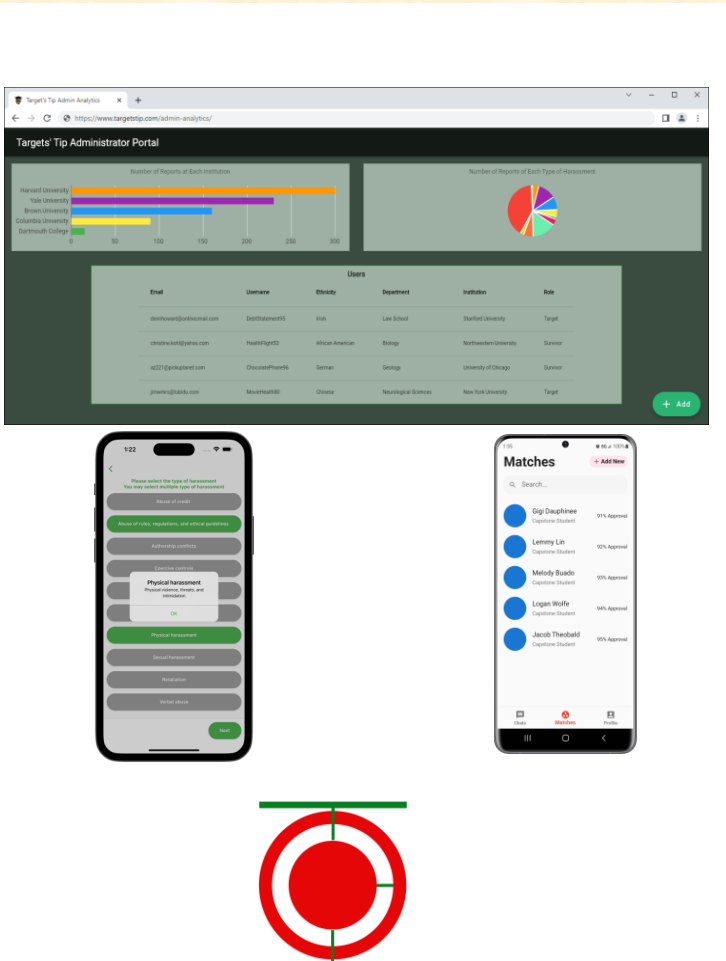
ects all
issue in
sources
mitigates
academic
king to

ibe and
nt or as
provide

ist, they
uggling
; and an
e that a
connect
tch, can
te their
g future

nstance
strators

7 on iOS
er while



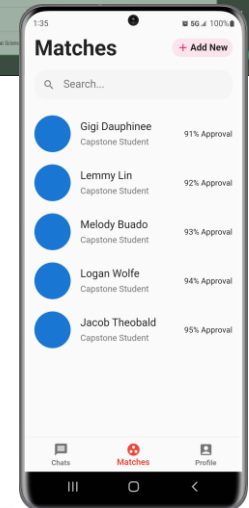
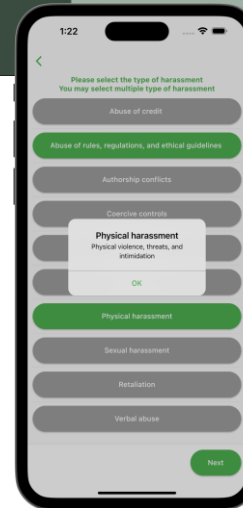
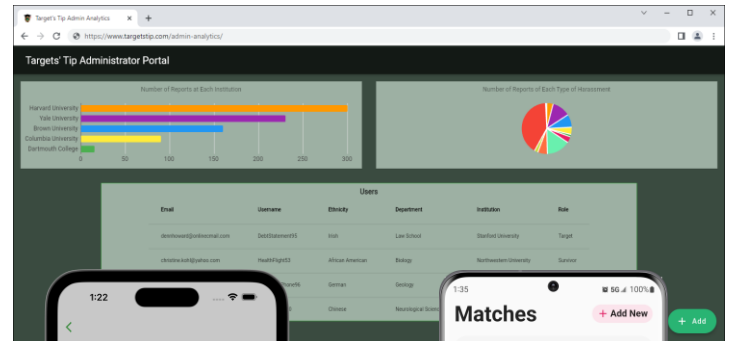
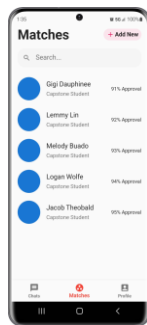
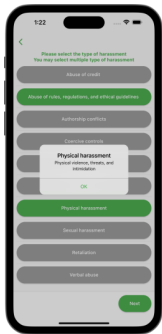
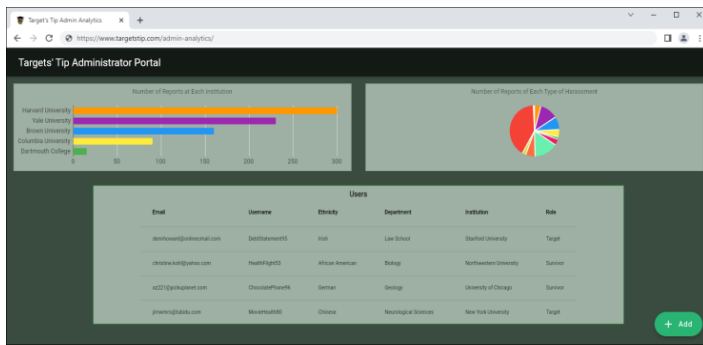
Team Targets' Tip Artwork Feedback (Griffin)

Original Artwork

Modified Artwork

Michigan support for s, types ove the
 ects all issue in sources mitigates academic king to
 ribe and nt or as provide
 ist, they ugging and an e that a connect tch, can te their g future
 nstance strators
 7 on iOS er while

Michigan support for s, types ove the
 ects all issue in sources mitigates academic king to
 ribe and nt or as provide
 ist, they ugging and an e that a connect tch, can te their g future
 nstance strators
 7 on iOS er while



Team TechSmith Artwork Feedback (Luke)

Original Artwork

Feedback

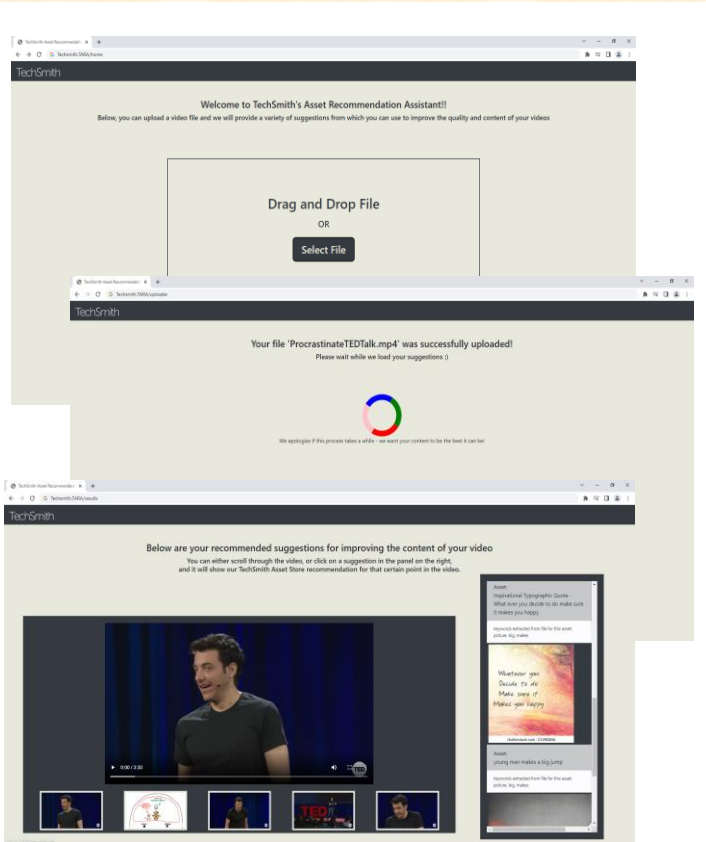
l screen
n is to
at help
products,
lwide.
y create
ccess, or
des. The
privates
ands of
he right

unt web
r audio
ne asset
l assets

re file is
ed with
re. The
n of the
he asset

sets by

nd CSS.
ices API
rtracted
age and



- You added borders to your artwork by adding borders to the images in the Word document. You were supposed to add the borders to the png images. I did it for you. It'll cost you.
- Other than the above, your artwork and layout are basically good.
- I may have resized and moved things slightly.
- Leave the artwork layout as it is in the updated zipped folder that I posted.
- You don't need to do anything with respect to artwork for this round. Just submit back to me the new zip file that I upload for your team. Make sure that you download the NEW zip file and submit the NEW zip file.



Team TechSmith Artwork Feedback (Luke)

Original Artwork

Modified Artwork

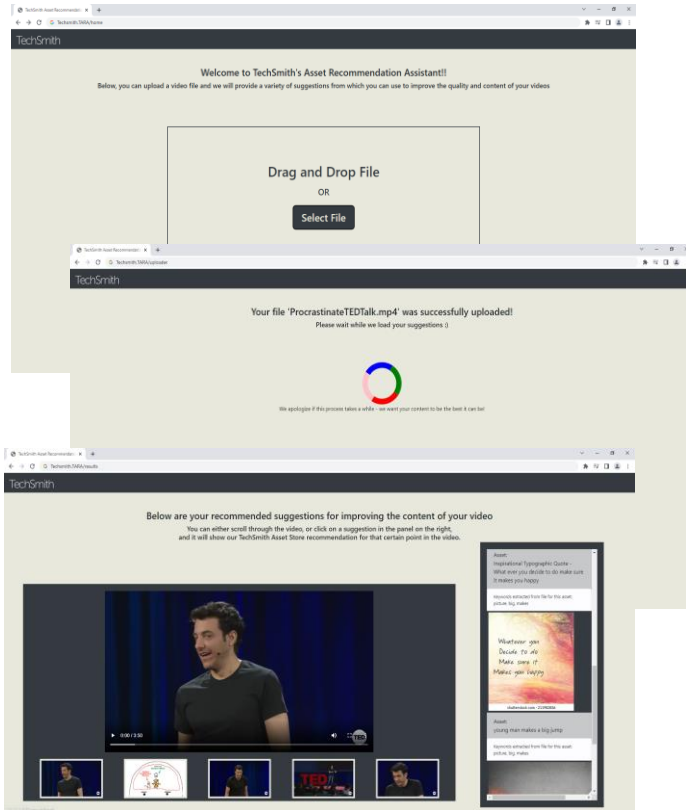
l screen
n is to
at help
roducts,
lwide.
y create
cess, or
les. The
privates
ands of
he right

unt web
r audio
ne asset
l assets

re file is
ed with
re. The
n of the
he asset

sets by

nd CSS.
ices API
tracted
age and



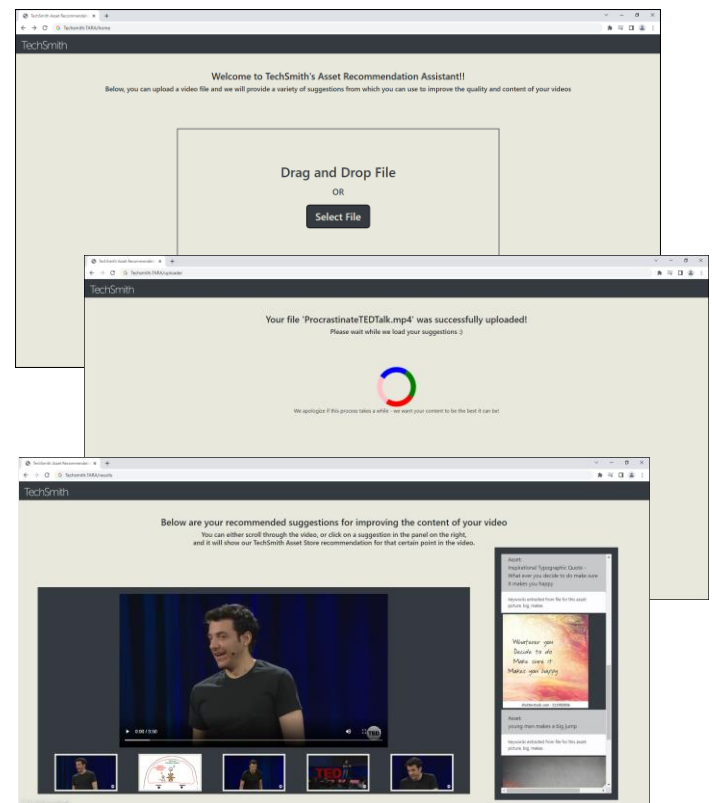
l screen
n is to
at help
roducts,
lwide.
y create
cess, or
les. The
privates
ands of
he right

unt web
r audio
ne asset
l assets

re file is
ed with
re. The
n of the
he asset

sets by

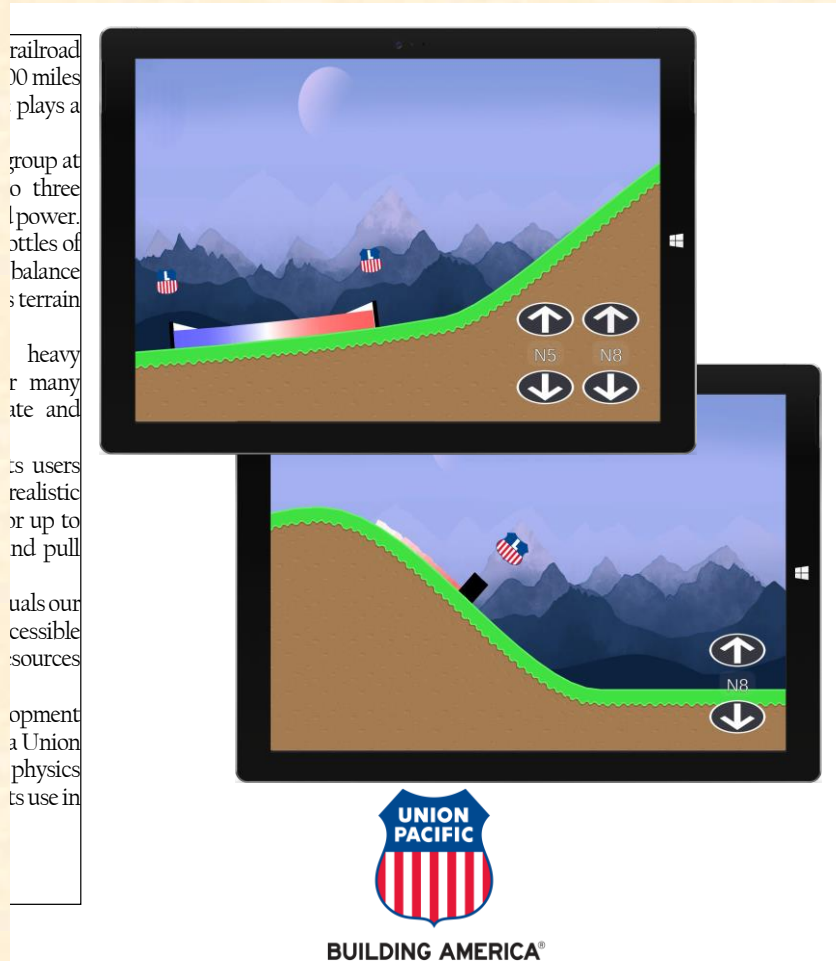
nd CSS.
ices API
tracted
age and



Team Union Pacific Artwork Feedback (Tommy)

Original Artwork

Feedback



- Your artwork and layout look great.
- I may have resized and moved things slightly.
- Leave the artwork layout as it is in the updated zipped folder that I posted.
- You don't need to do anything with respect to artwork for this round. Just submit back to me the new zip file that I upload for your team. Make sure that you download the NEW zip file and submit the NEW zip file.
- Nice work!
- Thanks!

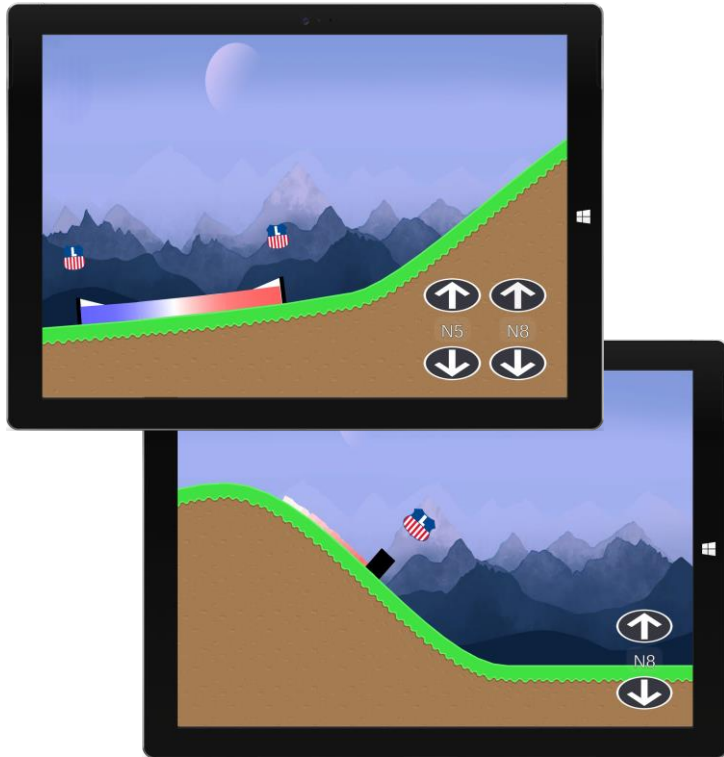


Team Union Pacific Artwork Feedback (Tommy)

Original Artwork

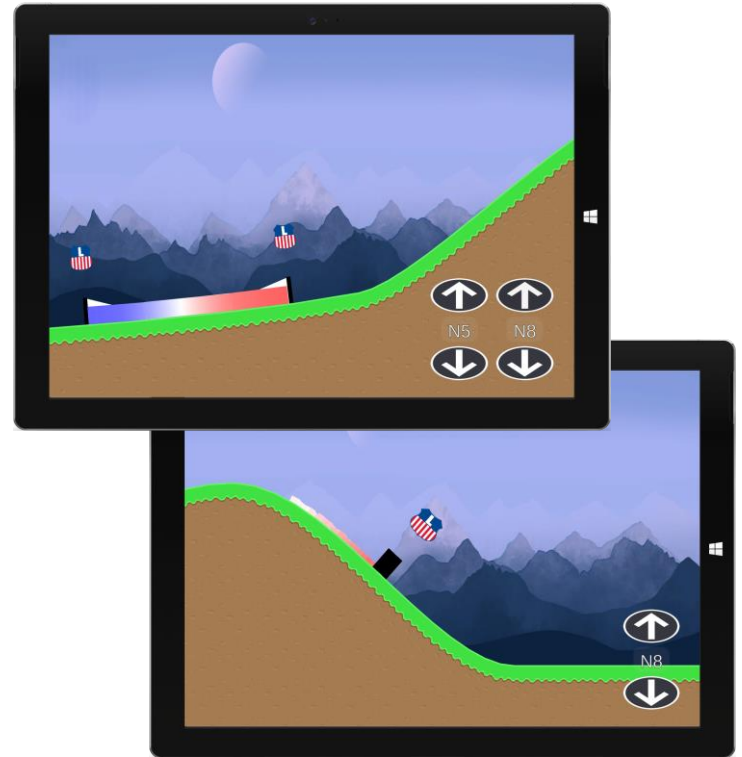
Modified Artwork

railroad
 00 miles
 plays a
 group at
 o three
 l power.
 ottles of
 balance
 s terrain
 heavy
 r many
 ate and
 s users
 realistic
 or up to
 nd pull
 uals our
 cessible
 sources
 opment
 a Union
 physics
 ts use in



BUILDING AMERICA®

railroad
 00 miles
 plays a
 group at
 o three
 l power.
 ottles of
 balance
 s terrain
 heavy
 r many
 ate and
 s users
 realistic
 or up to
 nd pull
 uals our
 cessible
 sources
 opment
 a Union
 physics
 ts use in



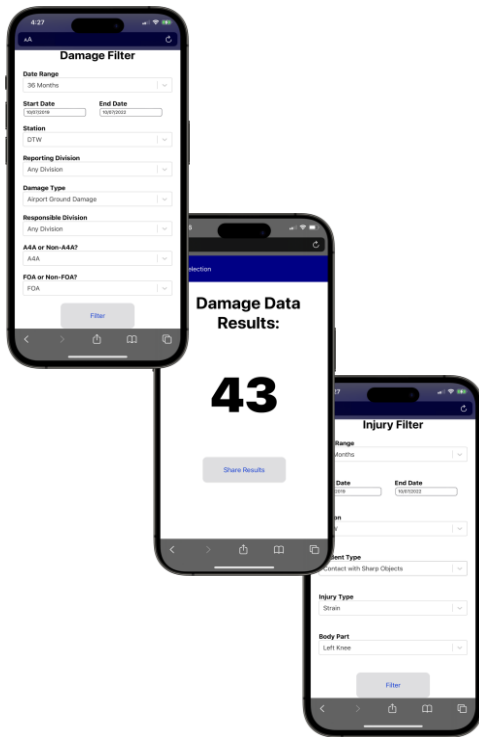
BUILDING AMERICA®



Team United Airlines Airport Operations Artwork Feedback (Griffin)

Original Artwork

Feedback



- Your artwork and layout are basically good, but your artwork was way too small.
- I resized and moved things slightly.
- Leave the artwork layout as it is in the updated zipped folder that I posted.
- You don't need to do anything with respect to artwork for this round. Just submit back to me the new zip file that I upload for your team. Make sure that you download the NEW zip file and submit the NEW zip file.

erves as
While
fleet of
mmense
global

United
injuries
currently
ng key
mobile

to the
robust

ess the
ries or
domain,
urrence,
ns. This
ly view
earch of
ick the
s, and a
d. Such
to the
a, along

n open-
a REST



Team United Airlines Airport Operations Artwork Feedback (Griffin)

Original Artwork

Modified Artwork

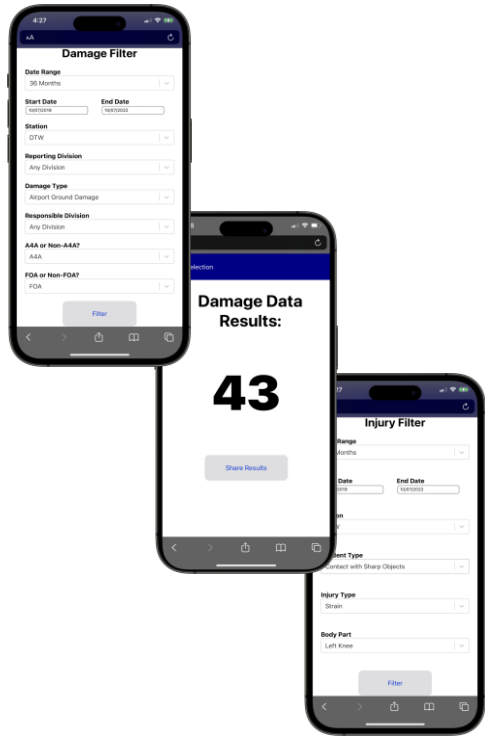
erves as
 While
 fleet of
 nmense
) global

 United
 injuries
 urrently
 ng key
 mobile

 to the
 robust

 ess the
 ries or
 domain,
 urrence,
 ns. This
 ly view
 earch of
 ick the
 s, and a
 d. Such
 to the
 a, along

 n open-
 a REST



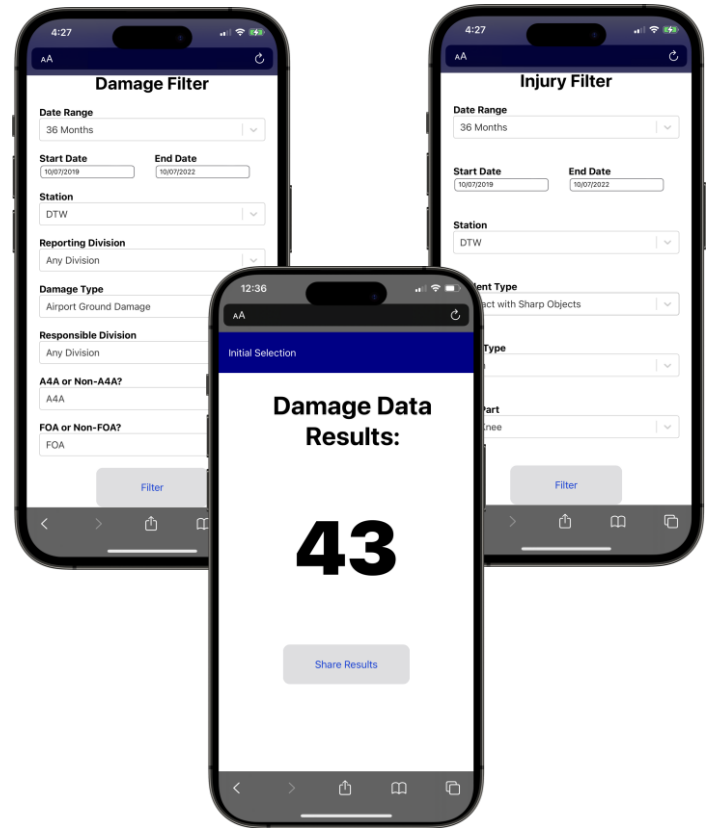
erves as
 While
 fleet of
 nmense
) global

 United
 injuries
 urrently
 ng key
 mobile

 to the
 robust

 ess the
 ries or
 domain,
 urrence,
 ns. This
 ly view
 earch of
 ick the
 s, and a
 d. Such
 to the
 a, along

 n open-
 a REST

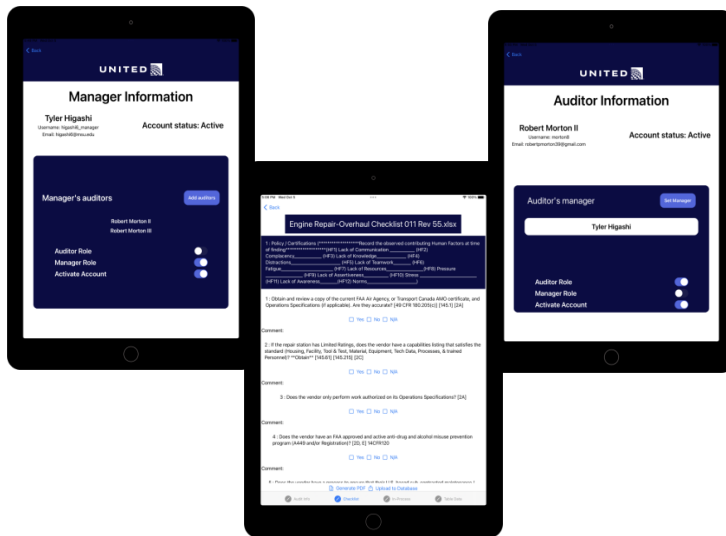


Team United Airlines Quality Assurance Artwork Feedback (Griffin)

Original Artwork

Feedback

- Your artwork and layout are basically good.
- I resized and moved things slightly.
- Leave the artwork layout as it is in the updated zipped folder that I posted.
- You don't need to do anything with respect to artwork for this round. Just submit back to me the new zip file that I upload for your team. Make sure that you download the NEW zip file and submit the NEW zip file.

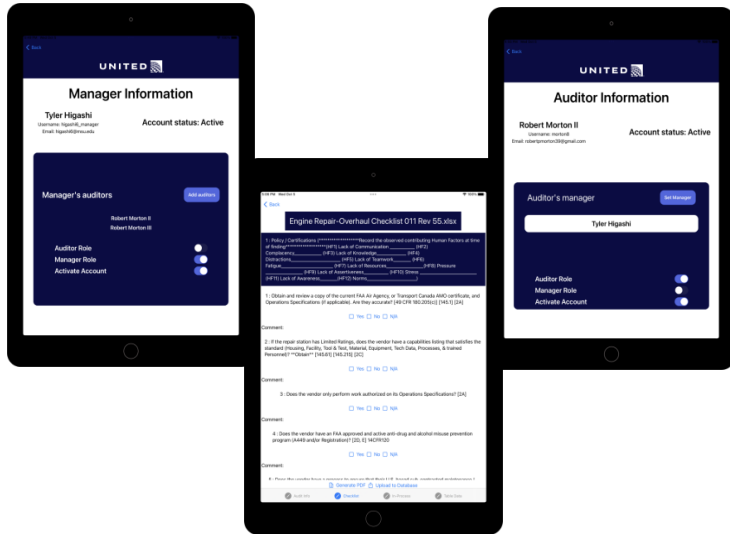


Team United Airlines Quality Assurance Artwork Feedback (Griffin)

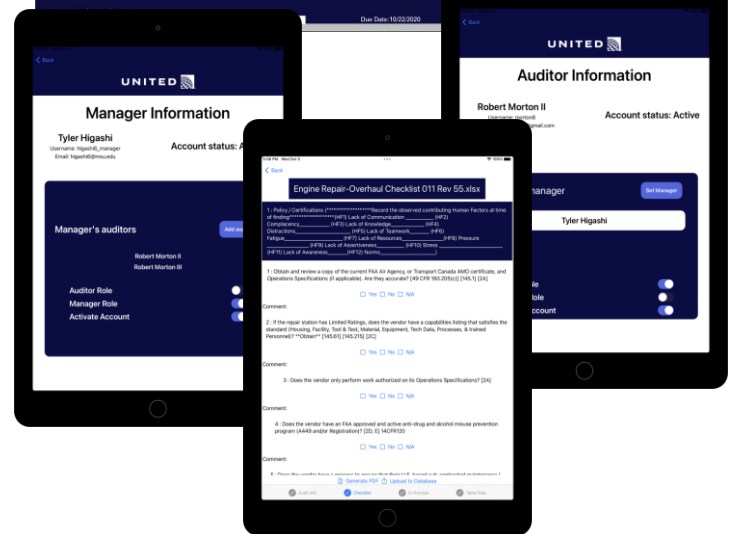
Original Artwork

Modified Artwork

one of almost all on its constant across pair and Airlines' re each variety of following ors with s moving the vendors. vendors de. uploads ops out. different so that and be n easily further database



one of almost all on its constant across pair and Airlines' re each variety of following ors with s moving the vendors. vendors de. uploads ops out. different so that and be n easily further database



Team United Airlines Training Artwork Feedback (Griffin)

Original Artwork

Feedback

lines
to more
is fleet
shape

provides
37 SAR
train
aircraft

the
irse
mance

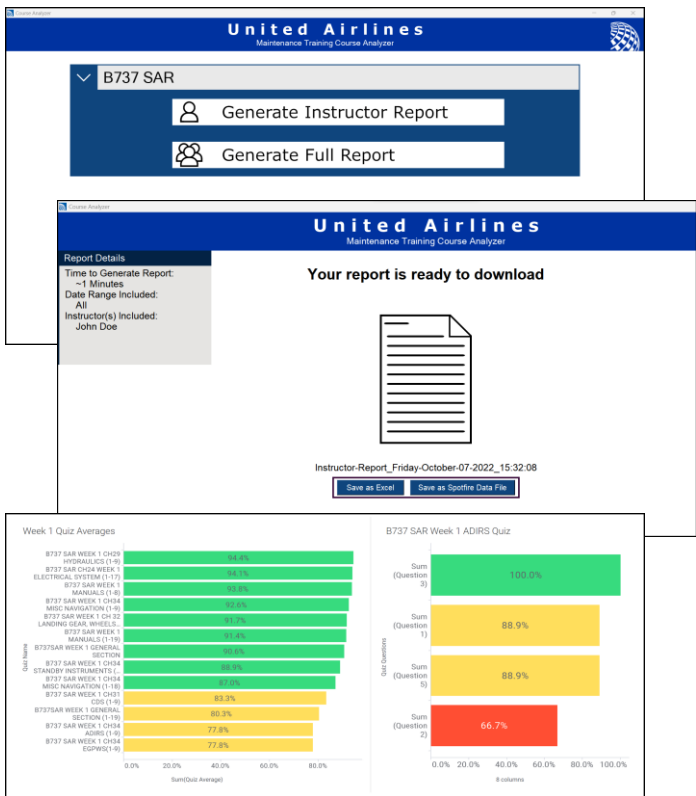
n

wn for
to
ith

on.

1

ll being
al
IBCO



- Your artwork and layout look great.
- I may have resized and moved things slightly.
- Leave the artwork layout as it is in the updated zipped folder that I posted.
- You don't need to do anything with respect to artwork for this round. Just submit back to me the new zip file that I upload for your team. Make sure that you download the NEW zip file and submit the NEW zip file.
- Nice work!
- Thanks!



Team United Airlines Training Artwork Feedback (Griffin)

Original Artwork

Modified Artwork

lines
to more
is fleet
shape

provides
37 SAR
train
aircraft

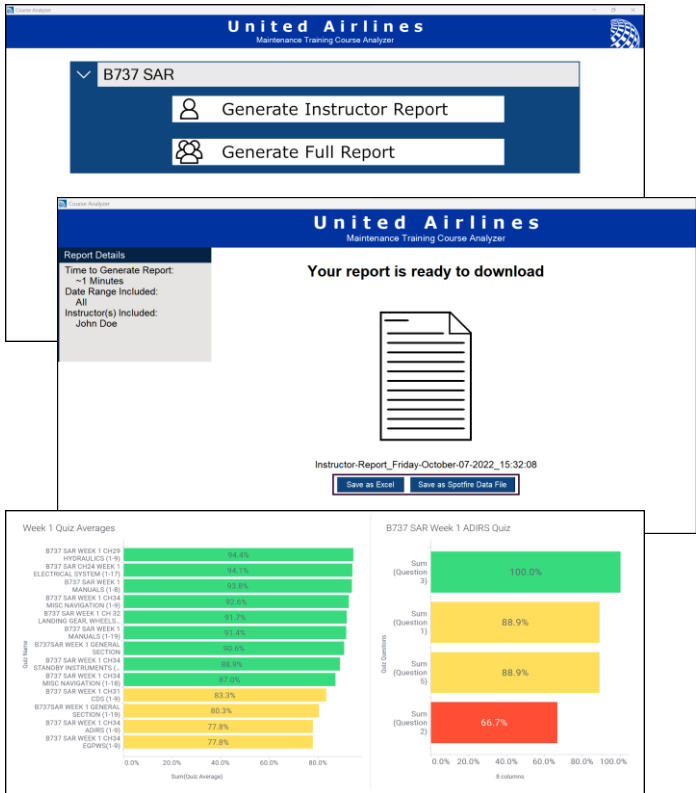
the
irise
rformance

n

wn for
to
ith

on.

ll being
al
IBCO

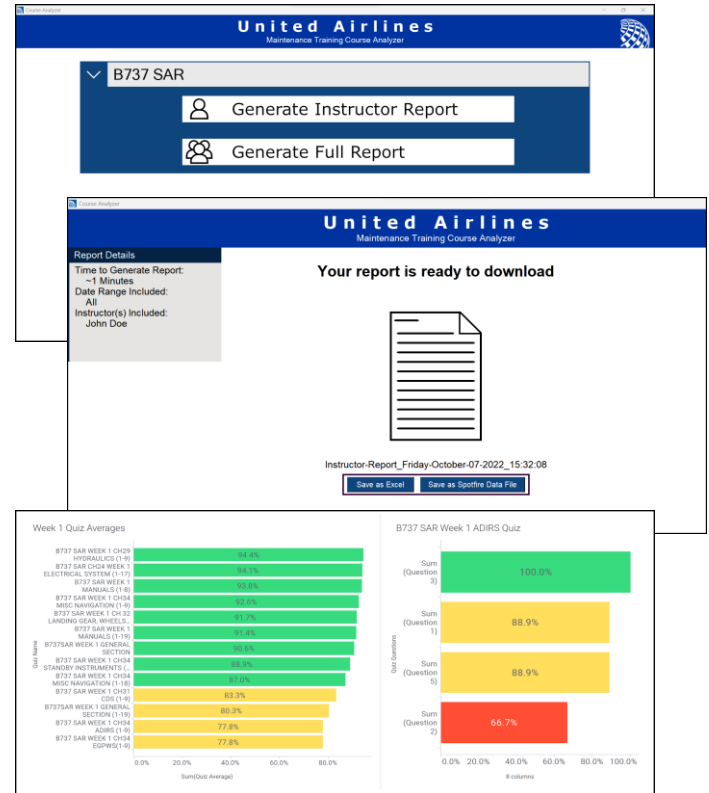


a fleet of
10 cities
United
its into

way for
and its
Airlines
ations.

alyzer, a
contain
questions
ructors
s along
atistical
a score
ce with

ie front-
analysis
ing with
oint. In
also be

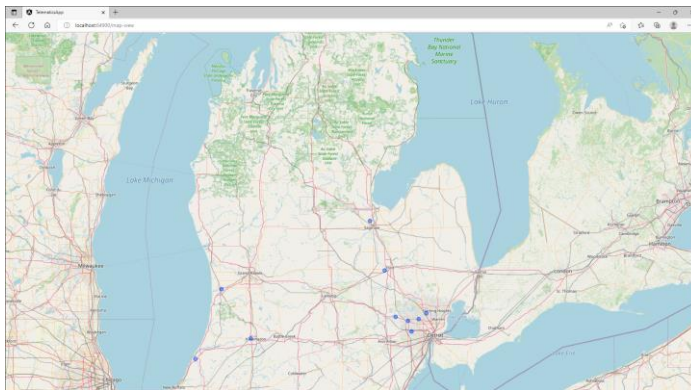


Team Urban Science Artwork Feedback (Griffin)

Original Artwork

Feedback

- Your artwork and layout basically good.
- Leave the artwork layout as it is in the updated zipped folder that I posted.
- I thought we agreed to redo the bottom artwork with a grey background and black text. I just hacked up a Command Prompt window with a grey background and black text. Redo your lower artwork.
- Nice work!
- Thanks!



ID	StartDate	EndDate	Request Date	Closed Date	STC Code	System	Description	admin@urbandata.com	Phone No		
1489	2140	2021-04-20T00:00:00.000	2021-01-14T00:00:00.000		NL	STC	NONE	N/A	UNKNOWNS	2021-01-14T00:00:00.000	48392
1489	2140	2021-04-20T00:00:00.000	2021-01-14T00:00:00.000	2021-01-14T00:00:00.000	NL	STC	NONE	N/A	UNKNOWNS	2021-01-14T00:00:00.000	48374
1489	2140	2021-04-20T00:00:00.000	2021-01-14T00:00:00.000	2021-01-14T00:00:00.000	NL	STC	NONE	N/A	UNKNOWNS	2021-01-14T00:00:00.000	48155
1483	1416	2022-01-28T00:00:00.000	2022-01-28T00:00:00.000	2022-01-28T00:00:00.000	NL	STC	NONE	N/A		2022-01-28T00:00:00.000	48075
1440	3233	2021-04-07T00:00:00.000	2021-04-07T00:00:00.000	2021-04-07T00:00:00.000	01494	RSKY	ASU			2021-01-01T00:00:00.000	48145
4940	3233	2022-11-19T00:00:00.000	2022-11-19T00:00:00.000	2022-11-01T00:00:00.000	NL	STC	NONE	N/A	ComBike	2022-11-22T00:00:00.000	48146
1020	3284	2020-10-14T00:00:00.000	2020-10-14T00:00:00.000	2020-10-14T00:00:00.000	NL	STC	NONE	N/A	ComBike	2020-10-20T00:00:00.000	48036
1020	3284	2021-01-09T00:00:00.000	2021-01-09T00:00:00.000	2021-01-09T00:00:00.000	NL	STC	NONE	N/A	UNKNOWNS	2021-02-24T00:00:00.000	48038
1020	3284	2021-03-04T00:00:00.000	2021-03-04T00:00:00.000	2021-03-04T00:00:00.000	NL	STC	NONE	N/A	UNKNOWNS	2021-04-27T00:00:00.000	48039
1020	3284	2021-07-17T00:00:00.000	2021-07-17T00:00:00.000	2021-07-17T00:00:00.000	NL	STC	NONE	N/A	UNKNOWNS	2021-08-17T00:00:00.000	48030
1020	3284	2022-02-07T00:00:00.000	2022-02-07T00:00:00.000	2022-02-07T00:00:00.000	NL	STC	NONE	N/A	UNKNOWNS	2022-03-10T00:00:00.000	48038
1020	3284	2022-03-29T00:00:00.000	2022-03-29T00:00:00.000	2022-03-29T00:00:00.000	NL	STC	NONE	N/A	UNKNOWNS	2022-07-26T00:00:00.000	48039
1020	3284	2022-04-05T00:00:00.000	2022-04-05T00:00:00.000	2022-04-05T00:00:00.000	CI3790	CHASSIS	TWAS			2021-01-01T00:00:00.000	48039
1020	3284	2022-07-26T00:00:00.000	2022-07-26T00:00:00.000	2022-07-26T00:00:00.000	NL	STC	NONE	N/A		2021-01-01T00:00:00.000	48038
1020	3416	2021-02-17T00:00:00.000	2021-02-17T00:00:00.000	2021-02-17T00:00:00.000	UNKNOWNS	POWERTRAIN	DRS			2021-01-01T00:00:00.000	0



URBAN SCIENCE.



Team Urban Science Artwork Feedback (Griffin)

Original Artwork

Modified Artwork

started
 for the
 served
 market to

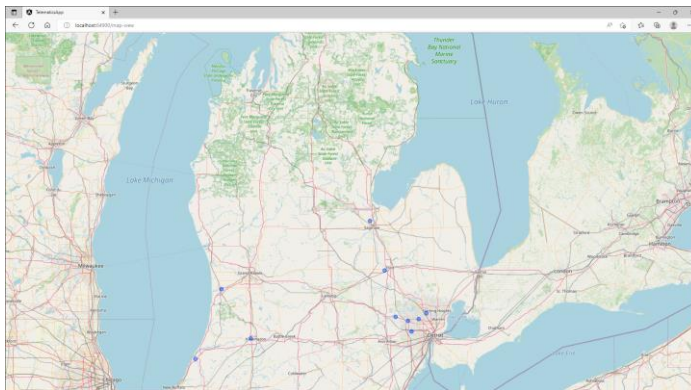
 on tire
 d alert
 ed data
 of data
 to gain
 ita.
 ts web
 through

 ts web
 ave the
 r as an
 ata and

 speed of
 d on a
 of the

 lerships
 select a
 ation on

 lematic
 ML, and
 s in C#



ID	SourceID	Source Start	TargetID	ClassID	STC Code	Station	STC System	Description	adminid@urbsci	Time ID
1489	1410	2021-04-20T00:00:00	2021-01-14T00:00:00		ML STC	NONE	N/A	UNIONHUB	2021-01-14T00:00:00	48392
1489	1410	2021-04-20T00:00:00	2021-01-14T00:00:00		ML STC	NONE	N/A	UNIONHUB	2021-01-14T00:00:00	48374
1489	1410	2021-04-20T00:00:00	2021-01-14T00:00:00		ML STC	NONE	N/A	UNIONHUB	2021-01-14T00:00:00	48165
1483	1416	2022-03-28T00:00:00	2021-01-08T00:00:00		ML STC	NONE	N/A	8001-01-01T00:00:00		48175
1441	1213	2021-04-07T00:00:00	2021-04-07T00:00:00		ST/RAI	RAI	AI	8001-01-01T00:00:00		48145
4941	2023	2021-11-19T00:00:00	2021-01-01T00:00:00		ML STC	NONE	N/A	Comaba	2021-11-22T00:00:00	48146
1028	1284	2020-10-14T00:00:00	2020-09-14T00:00:00		ML STC	NONE	N/A	Comaba	2020-10-20T00:00:00	48036
1028	1284	2021-01-05T00:00:00	2021-03-24T00:00:00		ML STC	NONE	N/A	UNIONHUB	2021-03-24T00:00:00	48038
1028	1284	2021-03-04T00:00:00	2021-03-04T00:00:00		ML STC	NONE	N/A	UNIONHUB	2021-04-21T00:00:00	48039
1028	1284	2021-07-17T00:00:00	2021-09-11T00:00:00		ML STC	NONE	N/A	UNIONHUB	2021-09-11T00:00:00	48030
1028	1284	2022-02-01T00:00:00	2022-02-01T00:00:00		ML STC	NONE	N/A	UNIONHUB	2022-02-01T00:00:00	48038
1028	1284	2022-04-26T00:00:00	2022-07-26T00:00:00		ML STC	NONE	N/A	UNIONHUB	2022-07-26T00:00:00	48039
1028	1284	2022-04-26T00:00:00	2022-04-26T00:00:00		CI/390	CHASSIS	THAS	8001-01-01T00:00:00		48039
1028	1284	2022-07-26T00:00:00	2022-07-26T00:00:00		ML STC	NONE	N/A	8001-01-01T00:00:00		48038
1063	1416	2021-03-27T00:00:00	2021-03-27T00:00:00		UNION	POWERTRAIN	DRS	8001-01-01T00:00:00		0



URBAN SCIENCE.

started
 for the
 served
 market to

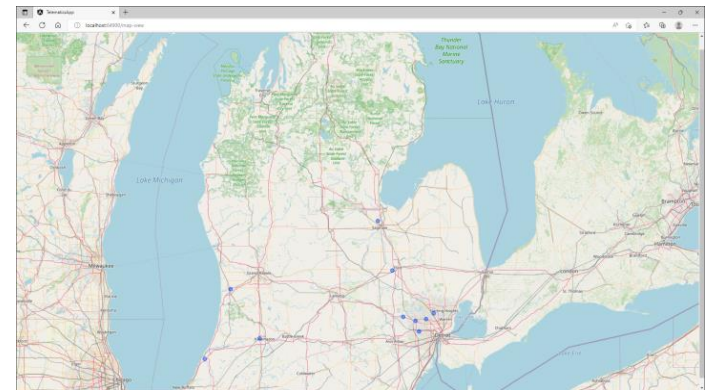
 on tire
 d alert
 ed data
 of data
 to gain
 ita.
 ts web
 through

 ts web
 ave the
 r as an
 ata and

 speed of
 d on a
 of the

 lerships
 select a
 ation on

 lematic
 ML, and
 s in C#



```

C:\Users\wrd>dir
Volume in drive C has no label.
Volume Serial Number is 0A62-9E8D

Directory of C:\Users\wrd

09/27/2022  04:39 PM  <DIR>          .
09/27/2022  04:30 PM  <DIR>          ..
04/12/2022  03:03 PM  <DIR>          .ipassword
06/27/2022  10:16 AM  <DIR>          .ms-ad
05/14/2022  01:44 PM  <DIR>          .ssh
04/12/2022  06:06 PM  <DIR>          .vscode
09/27/2022  04:39 PM  <DIR>          Contacts
10/03/2022  01:10 PM  <DIR>          Creative Cloud Files
09/27/2022  04:36 PM  <DIR>          Desktop
06/06/2022  10:08 AM  <DIR>          Documents
10/08/2022  06:35 AM  <DIR>          Downloads
09/27/2022  04:39 PM  <DIR>          Favorites
09/27/2022  04:39 PM  <DIR>          Links
04/09/2022  06:34 PM  <DIR>          Music
04/12/2022  01:01 PM  <DIR>          OneDrive
04/09/2022  06:35 PM  <DIR>          Pictures
09/27/2022  04:39 PM  <DIR>          Saved Games
09/27/2022  04:39 PM  <DIR>          Searches
04/09/2022  06:34 PM  <DIR>          Videos
            0 File(s)
            0 bytes
            19 Dir(s)  186,564,431,872 bytes free

C:\Users\wrd>
  
```



URBAN SCIENCE.

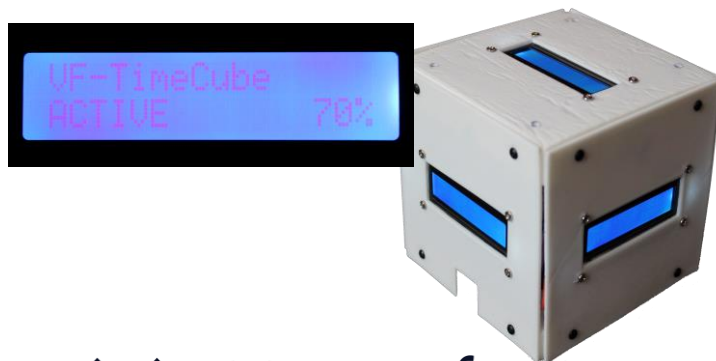
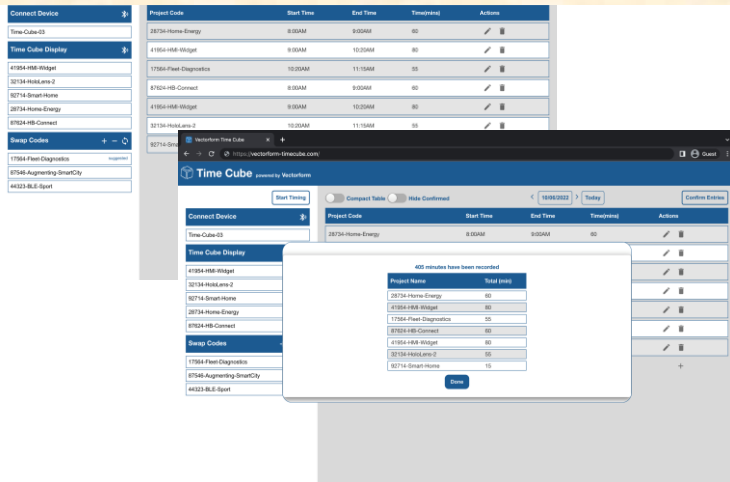


Team Vectorform Artwork Feedback (Luke)

Original Artwork

Feedback

Detroit, prides complex technologies, and s. air time ay. It is oth the r errors ionally, nvasive. ne Time ne on a ne Time ing and ing the updates before orform's n a fun, ual and process end and te. The ++ and



- You added borders to your artwork by adding borders to the images in the Word document. You were supposed to add the borders to the png images. I did it for you. It'll cost you.
- Other than the above, your artwork and layout are basically good.
- I may have resized and moved things slightly.
- Leave the artwork layout as it is in the updated zipped folder that I posted.
- You don't need to do anything with respect to artwork for this round. Just submit back to me the new zip file that I upload for your team. Make sure that you download the NEW zip file and submit the NEW zip file.



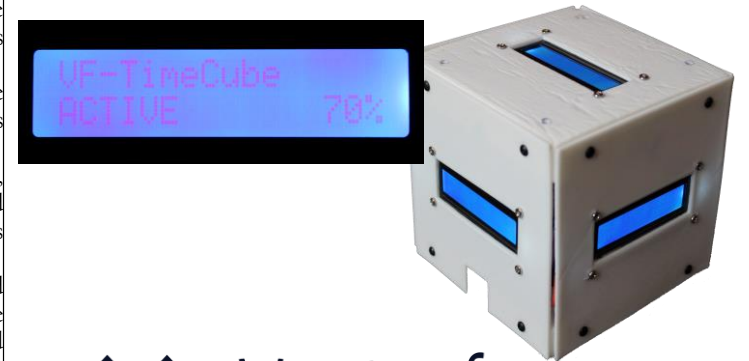
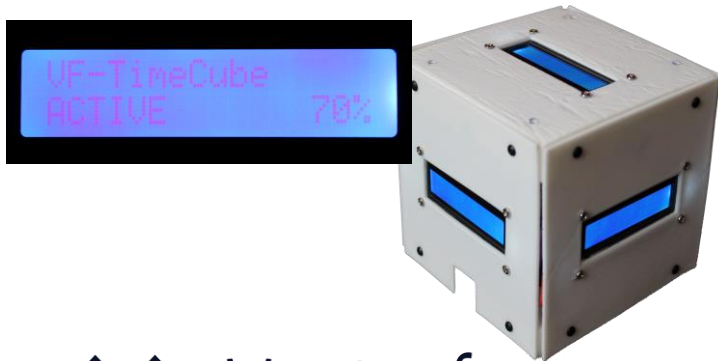
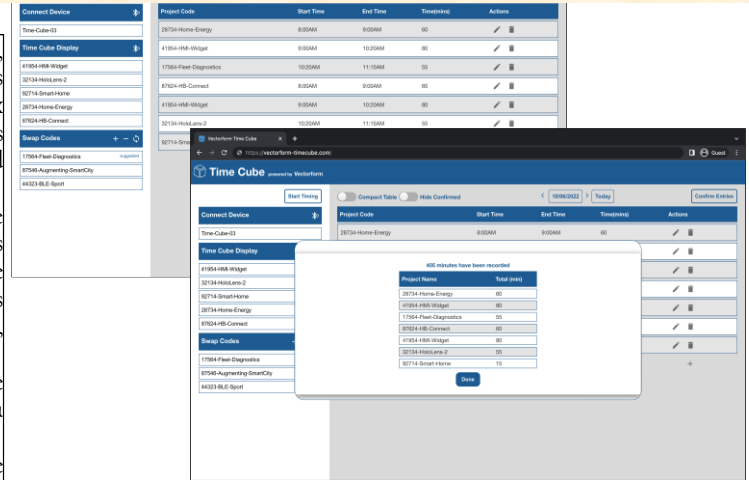
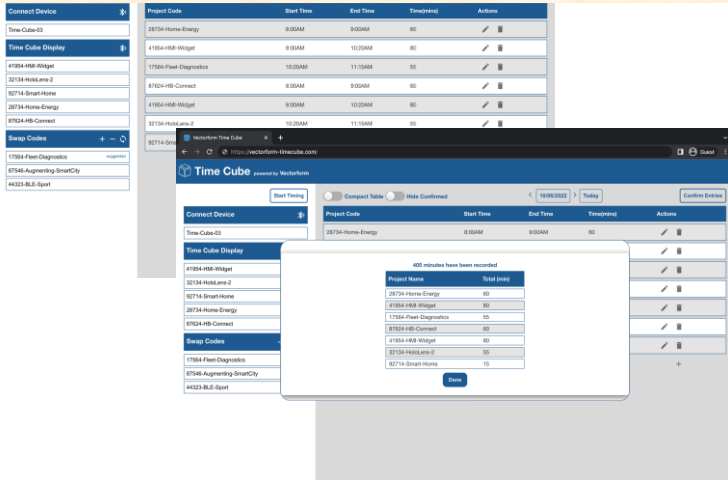
Team Vectorform Artwork Feedback (Luke)

Original Artwork

Modified Artwork

Detroit, prides complex technologies, and s. air time ay. It is oth the r errors ionally, nvasive. ne Time ne on a ne Time ing and ing the updates before orform's n a fun, ual and process end and te. The ++ and

Detroit, prides complex technologies, and s. air time ay. It is oth the r errors ionally, nvasive. ne Time ne on a ne Time ing and ing the updates before orform's n a fun, ual and process end and te. The ++ and



Team Volkswagen Artwork Feedback (Griffin)

Original Artwork

Feedback

operation
e of the
e 6,000
rough a

ur 2035,
vehicles.
es while
e about
s "range
harging
ilability
hnicall

acterize
em that
vehicles
s, which

users to
aspects
as local
lication
ation of
r types,
r. While
e buyers

reactive
atabase



- Your artwork and layout look great.
- I may have resized and moved things slightly.
- Leave the artwork layout as it is in the updated zipped folder that I posted.
- You don't need to do anything with respect to artwork for this round. Just submit back to me the new zip file that I upload for your team. Make sure that you download the NEW zip file and submit the NEW zip file.
- Nice work!
- Thanks!



Team Volkswagen Artwork Feedback (Griffin)

Original Artwork

Modified Artwork

operation
e of the
6,000
rough a

ur 2035,
vehicles.
es while
e about
s "range
harging
ibility
hically

acterize
em that
vehicles
, which

users to
aspects
as local
plication
ation of
r types,
. While
e buyers

reactive
atabase



operation
e of the
6,000
rough a

ur 2035,
vehicles.
es while
e about
s "range
harging
ibility
hically

acterize
em that
vehicles
, which

users to
aspects
as local
plication
ation of
r types,
. While
e buyers

reactive
atabase



Team Whirlpool Artwork Feedback (Tommy)

Original Artwork

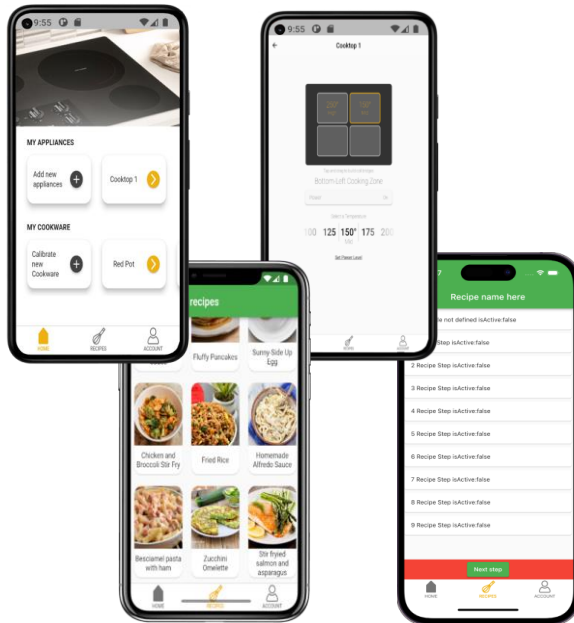
Feedback

Harbor,
company
69,000
ugh the

riability
perature
w home
perature
ditional
ce using
e.
ops, the
ne cook
ing the
y user
: recipe
ction of
estures,
d forth

of home
e able to
ol's own

umming
and iOS
duction
handled



Whirlpool

- Your artwork and layout look good, but your images were too small.
- resized and moved things slightly.
- Leave the artwork layout as it is in the updated zipped folder that I posted.
- You don't need to do anything with respect to artwork for this round. Just submit back to me the new zip file that I upload for your team. Make sure that you download the NEW zip file and submit the NEW zip file.
- Nice work!
- Thanks!

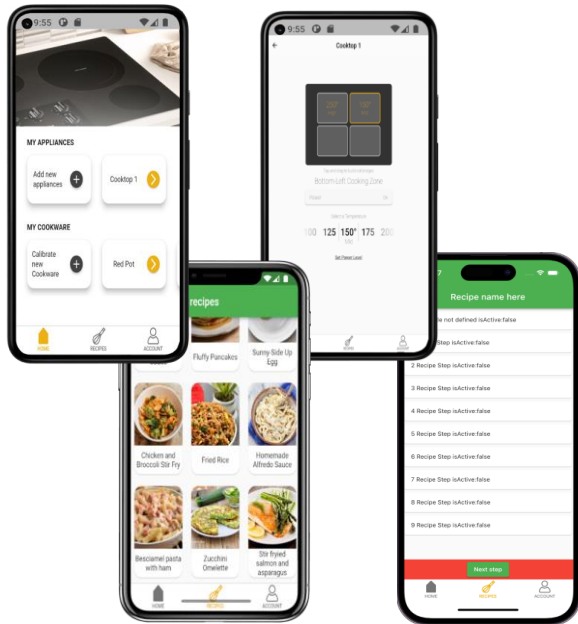


Team Whirlpool Artwork Feedback (Tommy)

Original Artwork

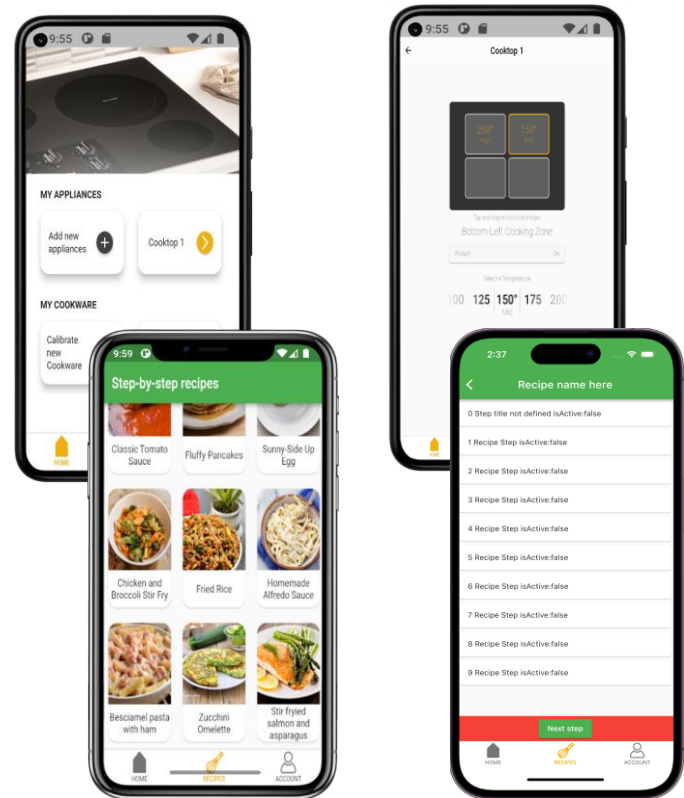
Modified Artwork

Harbor, company 69,000 ugh the
 riability
 erature
 w home
 erature
 ditional
 ce using
 e.
 ops, the
 ne cook
 ing the
 y user
 : recipe
 ction of
 estures,
 d forth
 of home
 e able to
 ol's own
 umming
 nd iOS
 duction
 handled



Whirlpool

Harbor, company 69,000 ugh the
 riability
 erature
 w home
 erature
 ditional
 ce using
 e.
 ops, the
 ne cook
 ing the
 y user
 : recipe
 ction of
 estures,
 d forth
 of home
 e able to
 ol's own
 umming
 nd iOS
 duction
 handled



Whirlpool

