

MICHIGAN STATE

UNIVERSITY

Beta Presentation

Personalizing the Culinary Experience

The Capstone Experience

Team Whirlpool

Sifatul Anindho

Sai Byrraju

Drew Peterson

Jasmine Richardson

Christina Tagay

Department of Computer Science and Engineering

Michigan State University

Spring 2024



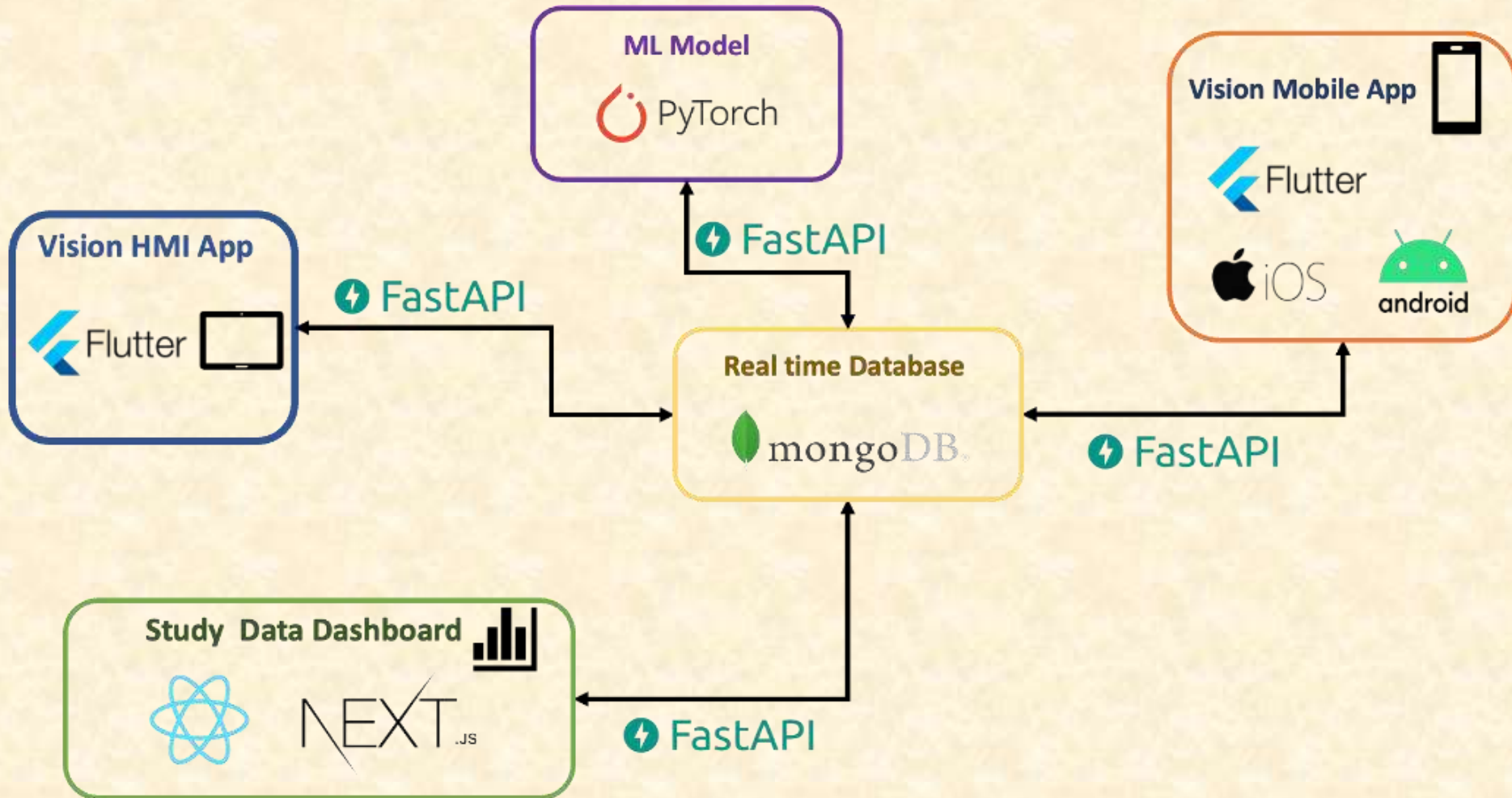
*From Students...
...to Professionals*

Project Overview

- Identify user preferences in interactions with HMI (Human-Machine Interface) and mobile app
- Personalize user profiles based on the analyzed interaction data
- Offer customized recipe suggestions and cooking settings to users
- Display aggregated user analytics on a data dashboard



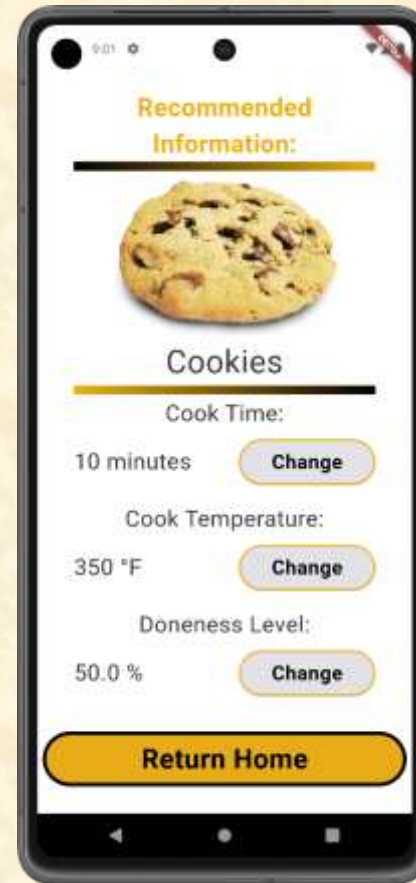
System Architecture



Mobile App



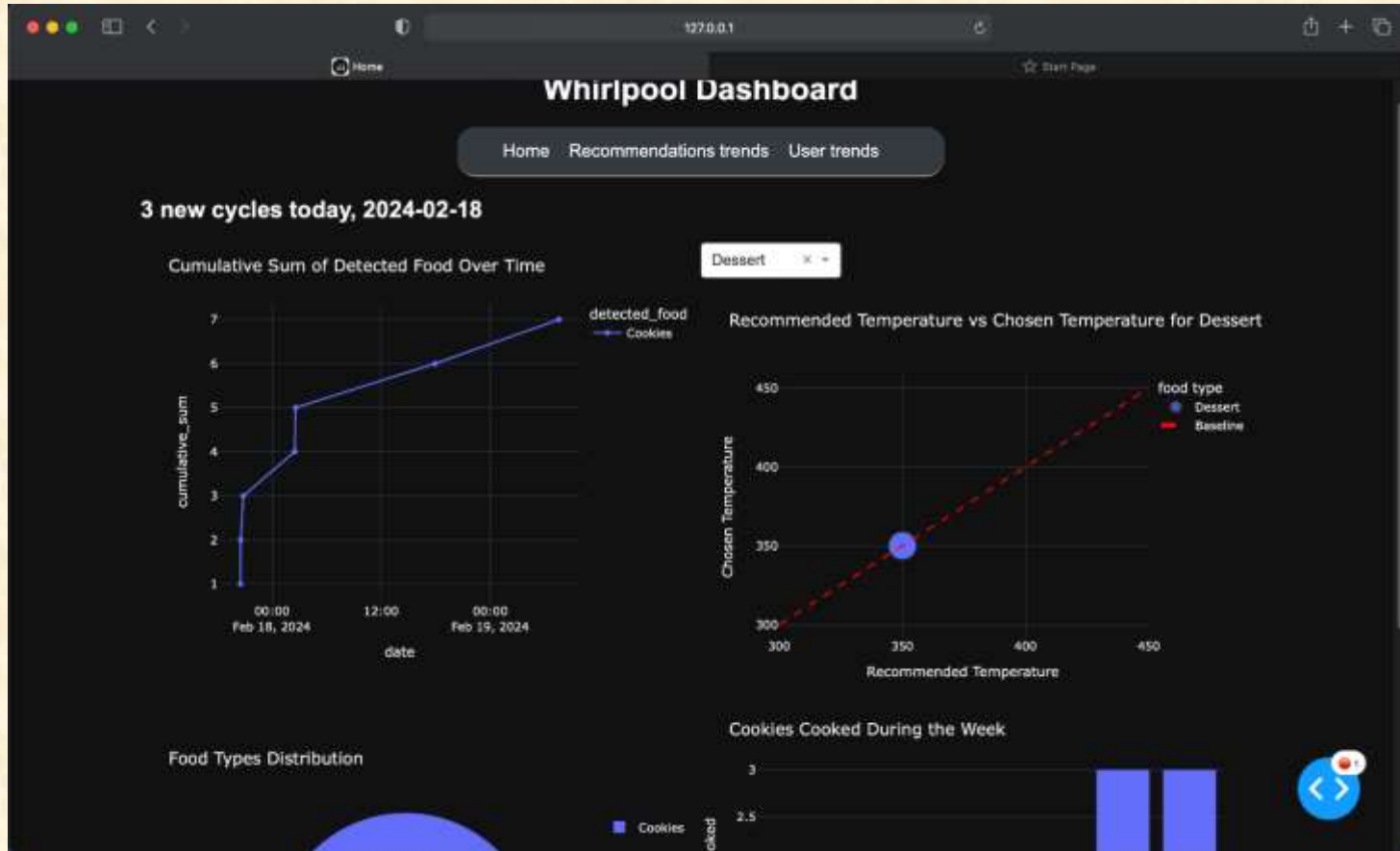
Home Screen



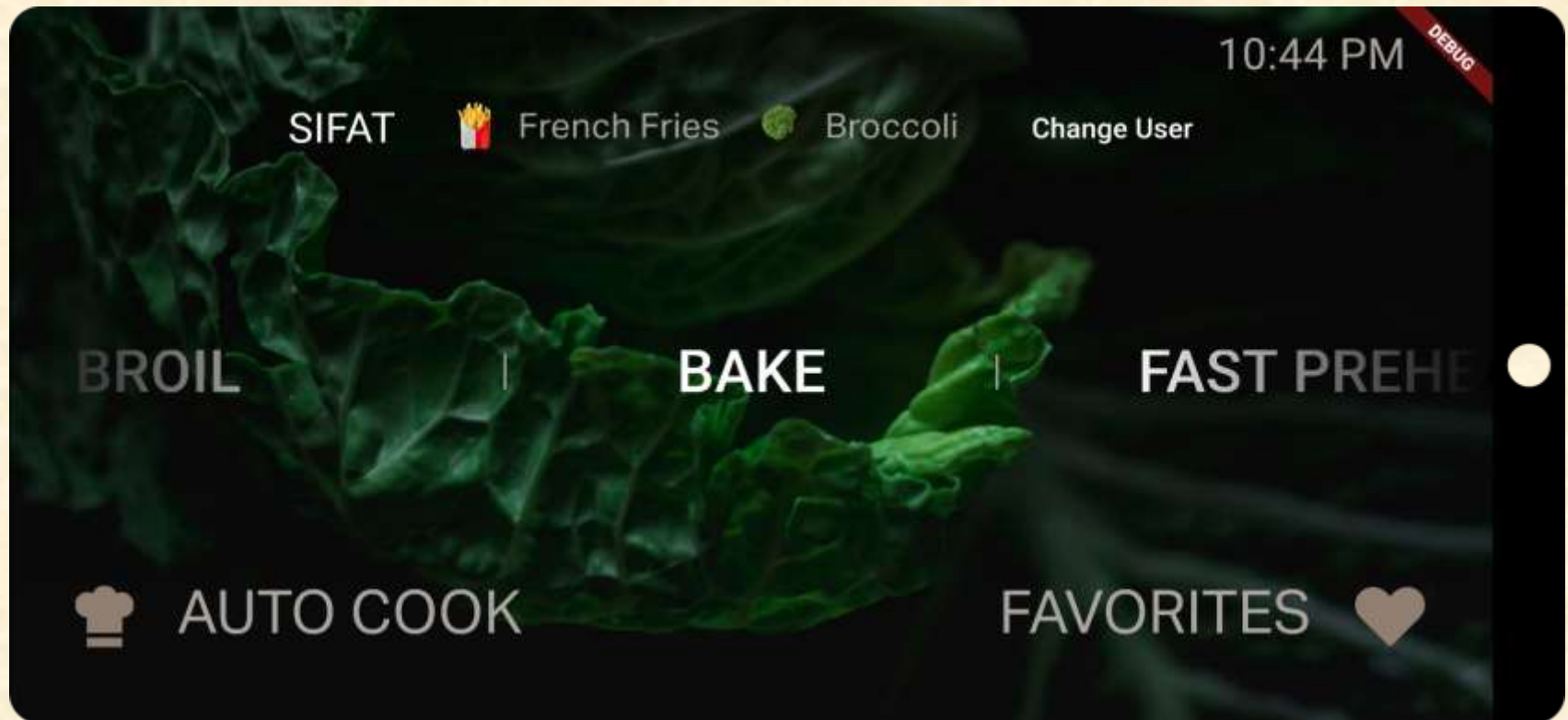
Suggestion Settings



Data Dashboard



HMI Main Screen



HMI Cooking Instructions



The image shows a simulated HMI screen for cooking instructions. The screen has a dark background with white text and icons. In the top right corner, there is a red diagonal banner with the word "DEBUG" in white. On the left side, there is a white back arrow icon. The main title "COOKING INSTRUCTIONS" is centered at the top. Below the title, on the left, is a square image of various vegetables including red and green bell peppers, onions, and tomatoes. To the right of the image, the instruction "Use the middle rack oven position and place your veggies" is displayed in white text. At the bottom left, the text "DONENESS: Soft" is shown, and at the bottom right, the text "START" is shown. A white circular indicator is visible on the right edge of the screen.

DEBUG

←

COOKING INSTRUCTIONS



Use the middle rack oven position
and place your veggies

DONENESS: Soft

START



What's left to do?

- Stretch Goals
 - Implementation with new source code
 - More user profile customization
 - Preheat from mobile app
- Other Tasks
 - Machine learning model evaluation
 - Minor UI changes



Questions?

?

?

?

?

?

?

?

?

?

