

MICHIGAN STATE
UNIVERSITY

Alpha Presentation

Fleet Auction Distribution and Sale Optimizer

[The Capstone Experience](#)

Team Chrysler

Zach Church

Dennis Cornwell

Kashif Kahn

Jeffery Yang

Department of Computer Science and Engineering

Michigan State University

Spring 2011



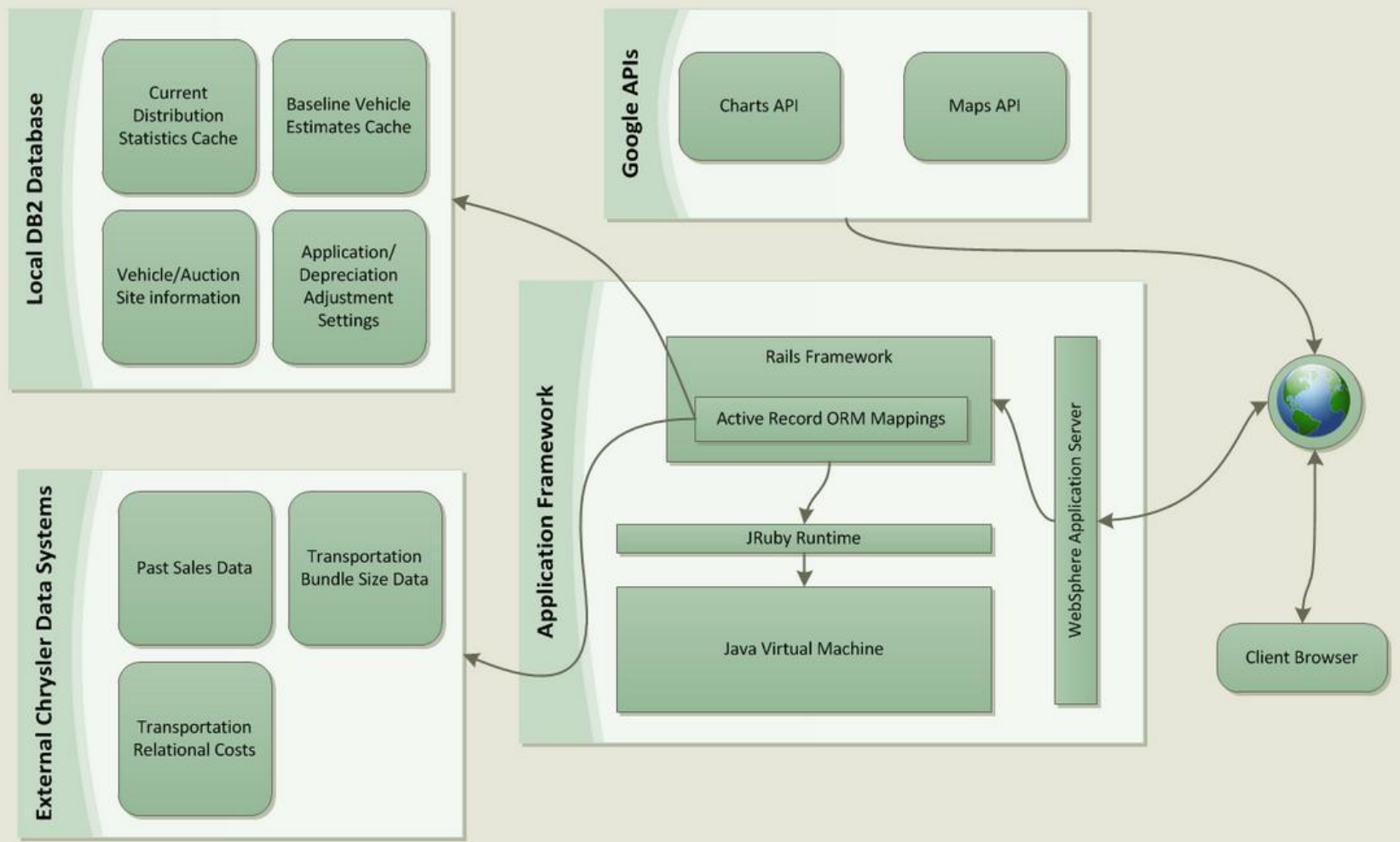
*From Students...
...to Professionals*

Project Overview

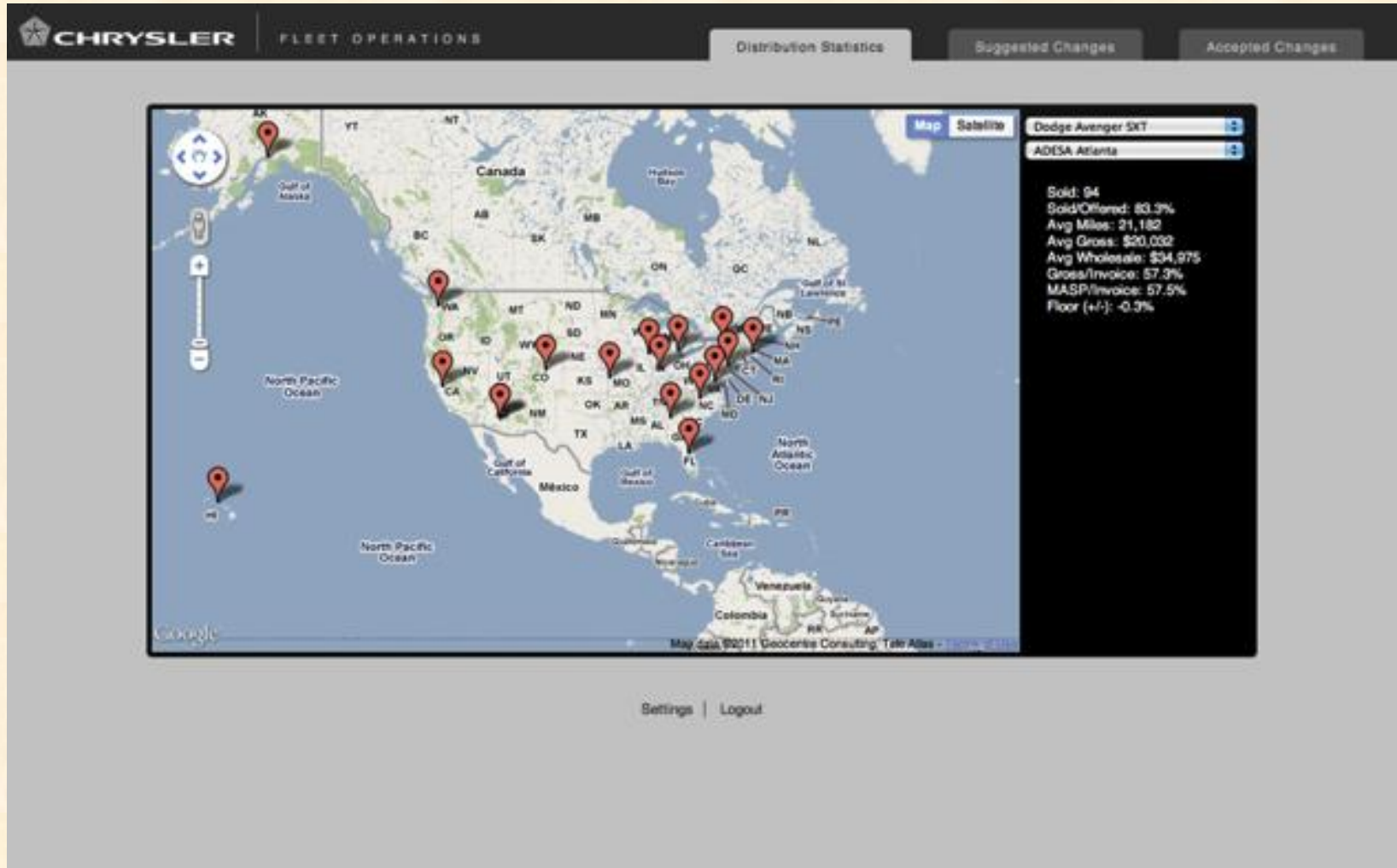
- Chrysler sells fleets of vehicles that get returned to auction sites
- Dealers come to bid on cars at auction sites across the country (15 or so nation wide)
- Our task is to optimize where vehicles are sent
- Factors include climate, market saturation, transportation logistics, etc...



System Architecture



Distribution Statistics



Adjustments

The screenshot shows a web browser window with the URL `localhost:3000/vehicle_models/5/edit`. The page header includes the Chrysler logo and the text "FLEET OPERATIONS". There are three buttons in the top right: "Distribution Statistics", "Suggested Changes", and "Accepted Changes".

The main content area is a form for editing vehicle details. It includes the following fields and controls:

- Make:** Dodge Journey SXT AWD
- Odometer:** A section containing:
 - Base mileage:** 11000
 - Depreciation per 1000 miles:** 100.0
 - [Delete](#)
- Damages:** A section containing the text: "The damage from the vehicle will be considered at face value."
- Update:** A button.
- Adjustment List:** A list with two items:
 - Odometer [Add Adjustment](#)
 - Seasonal/Regional

At the bottom of the page, there are links for "Settings" and "Logout".



Adjustments

Chrome File Edit View History Bookmarks Window Help

Chrysler Fleet Operations

localhost:3000/vehicle_models/5/edit

Facebook MSU Triathlon Slacker MHS Run Vim Class Sev Other Bookmarks

Make Dodge Journey SXT AWD

Damages

The damage from the vehicle will be considered at face value.

Seasonal/Regional

Start date

End date

- ADESA Atlanta
- ADESA Golden Gate (San Francisco)
- ADESA Indianapolis
- ADESA Kansas City
- ADESA Seattle
- ADESA Syracuse
- Dealers Auto Auction of Alaska
- Greensboro
- Manheim Arena Illinois (Chicago)
- Manheim Denver
- Manheim Detroit
- Manheim Fredericksburg
- Manheim Hawaii
- Manheim New England
- Manheim Orlando
- Manheim Phoenix
- Manheim Philadelphia

Amount

[Delete](#)

Seasonal/Regional [+](#) [Add Adjustment](#)



Suggested Changes

CHRYSLER FLEET OPERATIONS

Distribution Statistics | **Suggested Changes** | Accepted Changes

1990 Dodge Avenger SXT (-\$14,673)

1995 Dodge Avenger SXT (-\$609)

1991 Dodge Avenger SXT (-\$2,485)

1994 Dodge Avenger SXT (-\$2,530)

1992 Dodge Avenger SXT (-\$8,523)

2009 Dodge Avenger SXT (-\$8,550)

2000 Dodge Avenger SXT (\$15,726)

2005 Dodge Avenger R/T (-\$415)

2004 Dodge Avenger R/T (-\$349)

1999 Dodge Avenger R/T (-\$1,666)

1990 Dodge Avenger R/T (\$6,634)

2001 Dodge Avenger R/T (\$3,639)

2001 Dodge Avenger R/T (\$1,902)

3 vehicles via rail (\$2400)
Arriving 2011-02-28

1993 Dodge Avenger SXT (\$2,857)

1993 Dodge Avenger SXT (\$5,589)

Dodge Charger (\$1,583)

New Bundle

Settings | Logout



What's left to do?

- Finish hooking up fake data to database values
- Finish UI for settings page
- Finalize UI for auctions and suggested changes pages
- Test functionality against real Chrysler data
- Create printable styles for exporting reports

