

**MICHIGAN STATE**  

---

**U N I V E R S I T Y**

# Beta Presentation

## Productivity Toolbar

### The Capstone Experience

Team GM

David Barrie

Justin Rucinski

Kan Zhou

Kevin Piotrowski

Ruoqing Chen

Department of Computer Science and Engineering  
Michigan State University

Fall 2014



*From Students...  
...to Professionals*

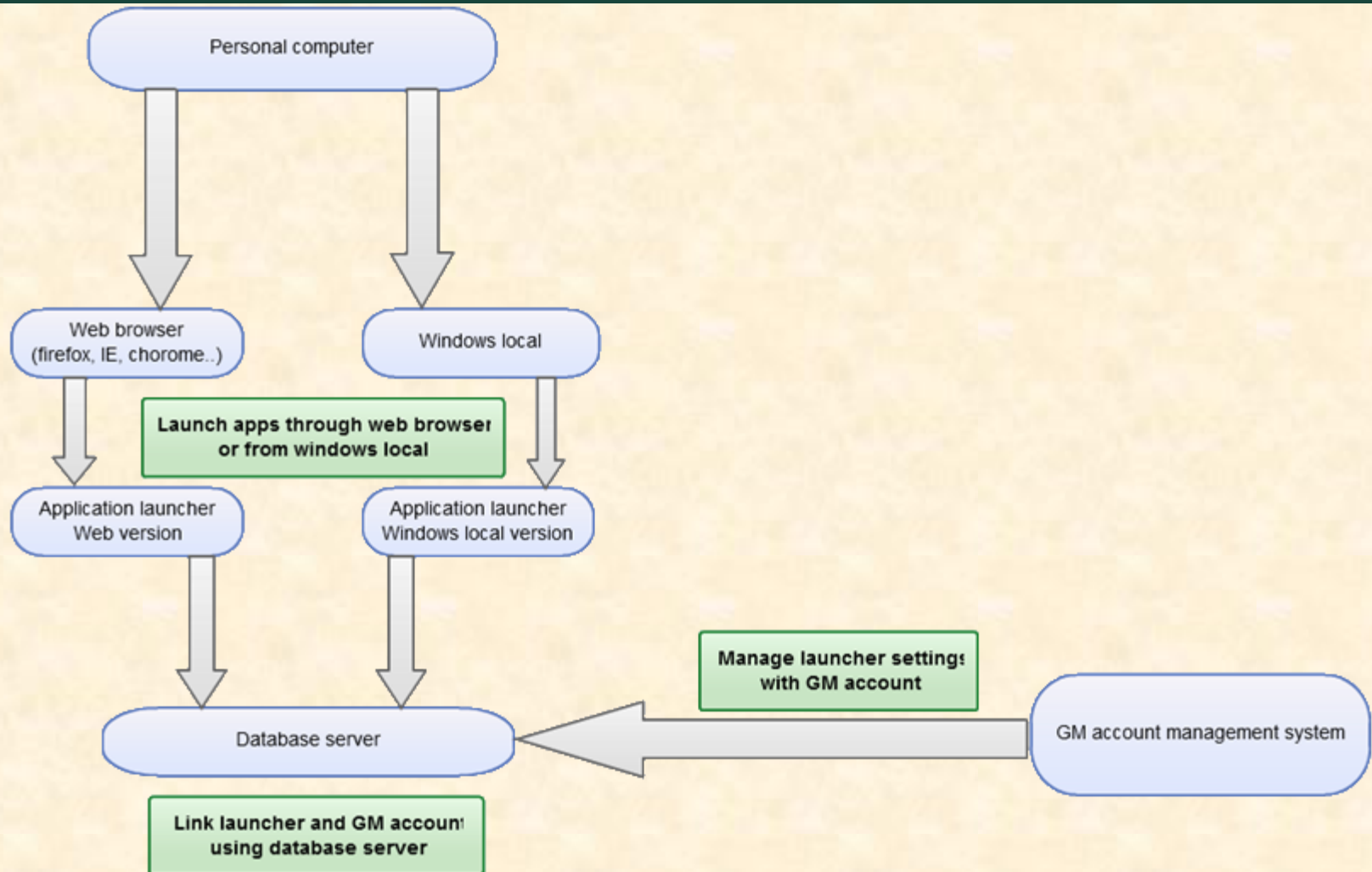
# Project Overview

---

- Fast and convenient access to GM applications
- Manage applications
  - Add/Remove
  - Layout
  - Categorize
- Linked to General Motors account
- Desktop and Web Launchers
  - Windows 7 and Internet Explorer support



# System Architecture



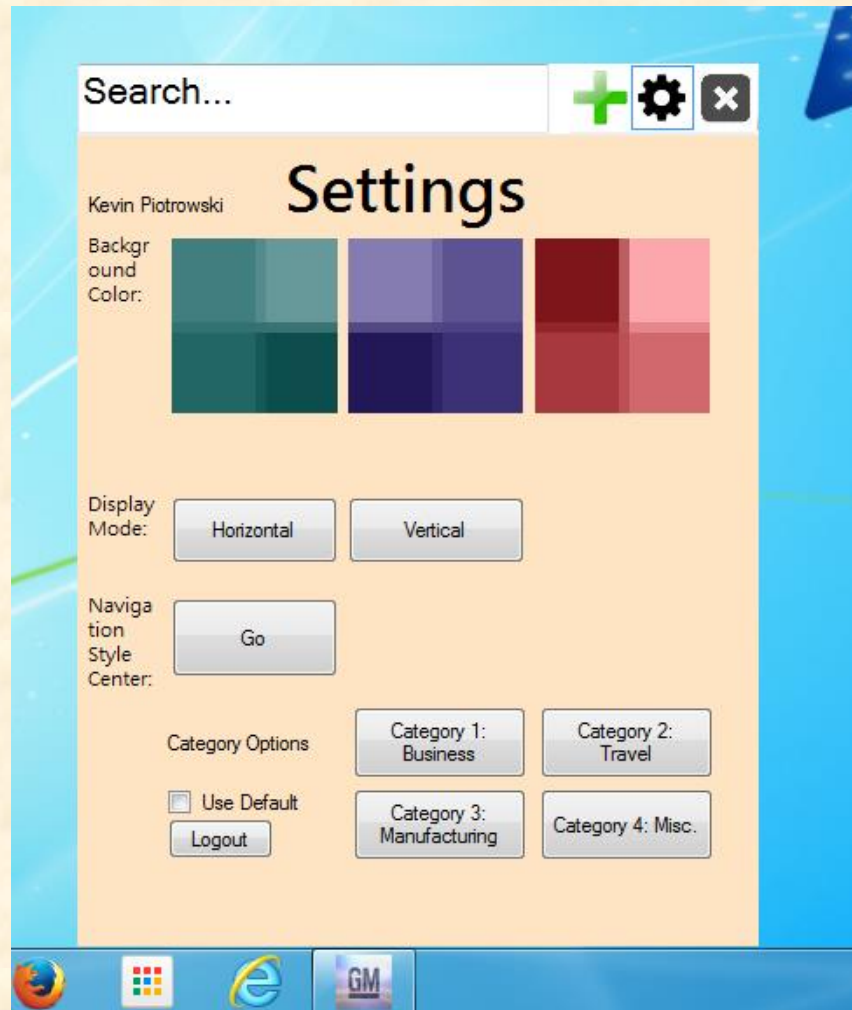
# Web launcher



# Desktop launcher(app panel)



# Desktop launcher(setting panel)



# Web application store

The screenshot displays a web application store interface. On the left, a grid of application tiles is shown, each with a title and an icon. The tiles are arranged in four rows and nine columns, with the last row containing seven tiles. The applications include:

- Books 24x7
- CAP
- e-Approval
- ERMS
- getAbstract
- IT Support Center
- Learning Center
- Link Sink
- myTravel Approval
- GM Overdrive
- Peoplefinder
- Socrates
- Webmail
- Messenger
- Office Notes
- W Explorer
- Favorites
- Climber
- Security
- Interact
- WebEx
- Manufacturing
- App Management
- Photo Editor
- Adobe
- Maps
- Charts
- Recruiting
- FlightFinder
- Cafeteria
- Video Player
- Workflows
- Roundtable
- Designer

On the right side of the interface, there is a sidebar with the following elements:

- A header section labeled "Selected User:"
- A dropdown menu labeled "users:" with the text "select user..." and a downward arrow.
- A section labeled "User's Apps"



# What's left to do?

---

- Project Video
- Project Plan
- User Manual & Administrator Manual
- Code clean up

